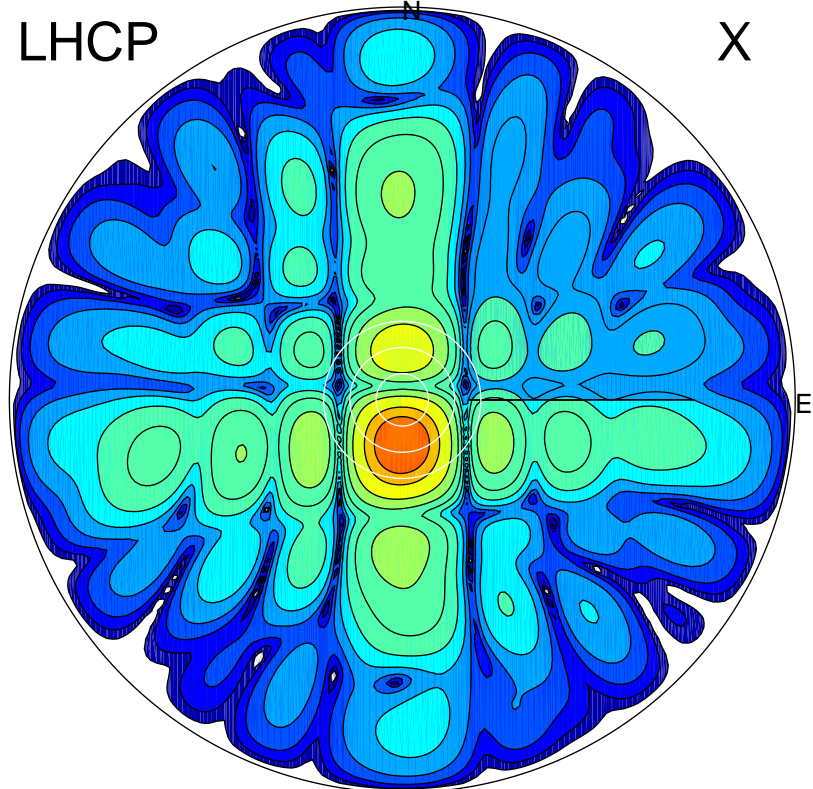


2016-10-22 14:31:57 A2 4.54400000 MHz 783.0 kW

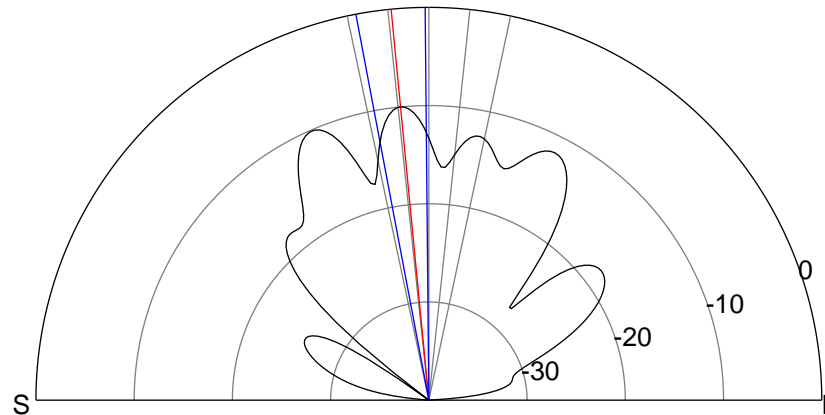
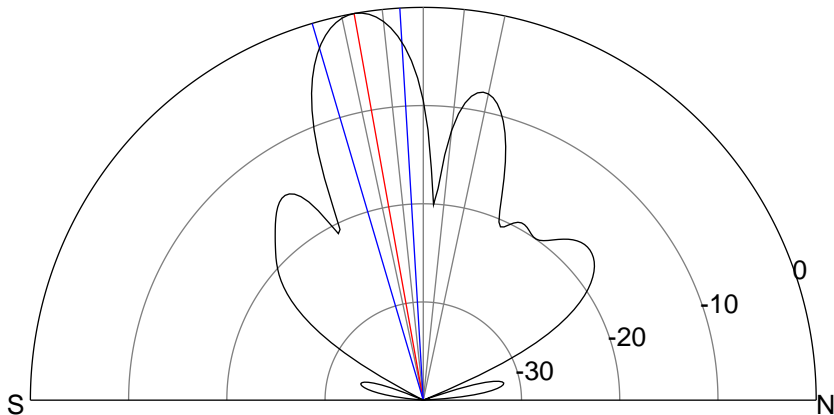
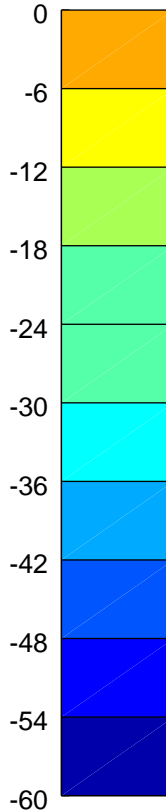
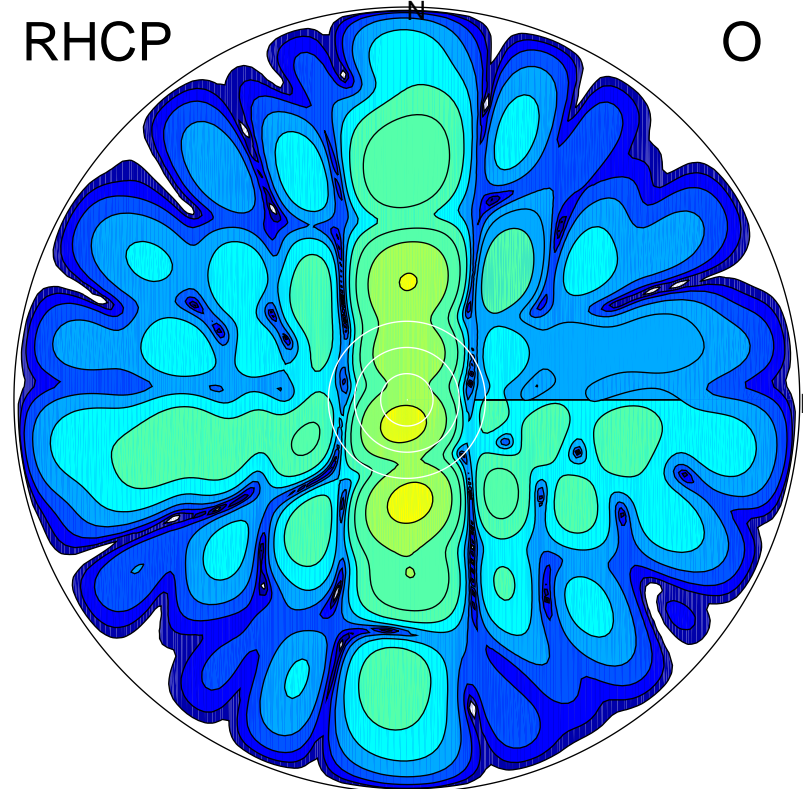
LHCP

X



RHCP

O



ERP 113.8 MW

Peak gain 21.6 dBi at Az 180 Zen 10
RHCP gain 9.2 dBi
N-S peak 21.6 dBi at Zen -10.1
N-S -3 dB beamwidth 13.0 deg.

ERP 11.5 MW

Peak gain 11.7 dBi at Az 188 Zen 6
LHCP gain 20.3 dBi
N-S peak 11.6 dBi at Zen -5.5
N-S -3 dB beamwidth 10.2 deg.