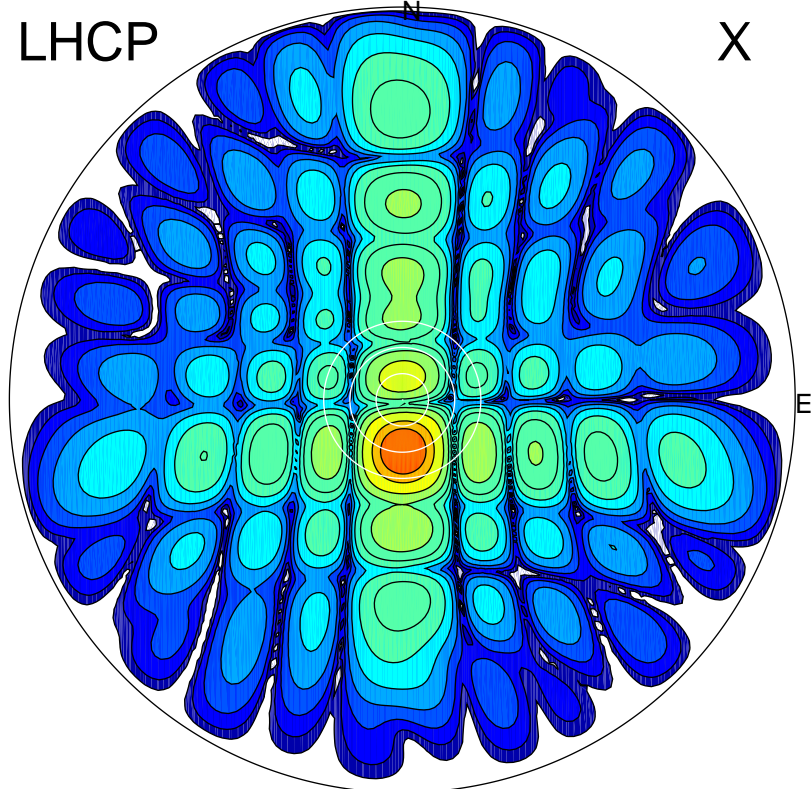


2016-10-22 12:16:57 A2 5.42300000 MHz 807.0 kW

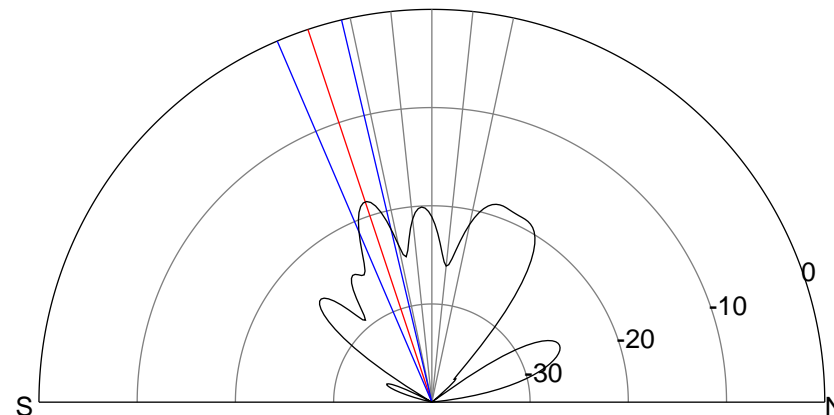
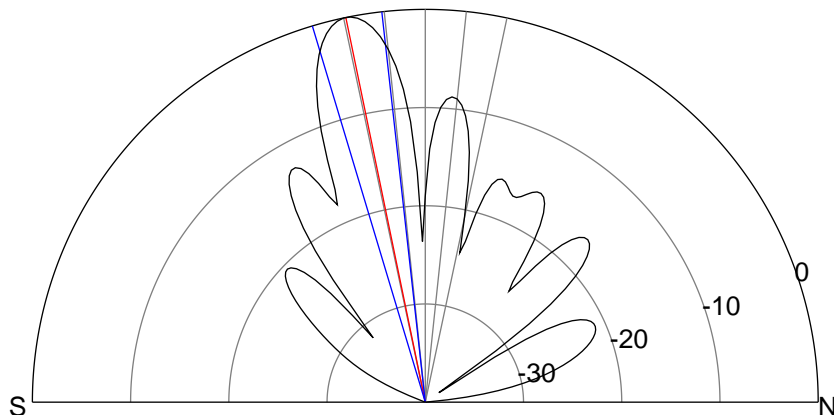
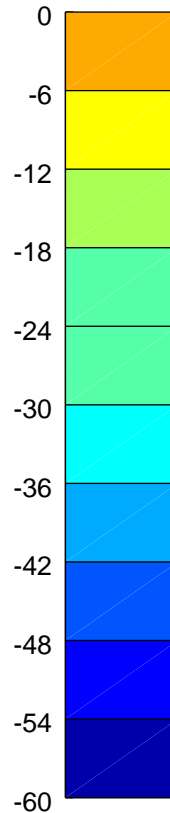
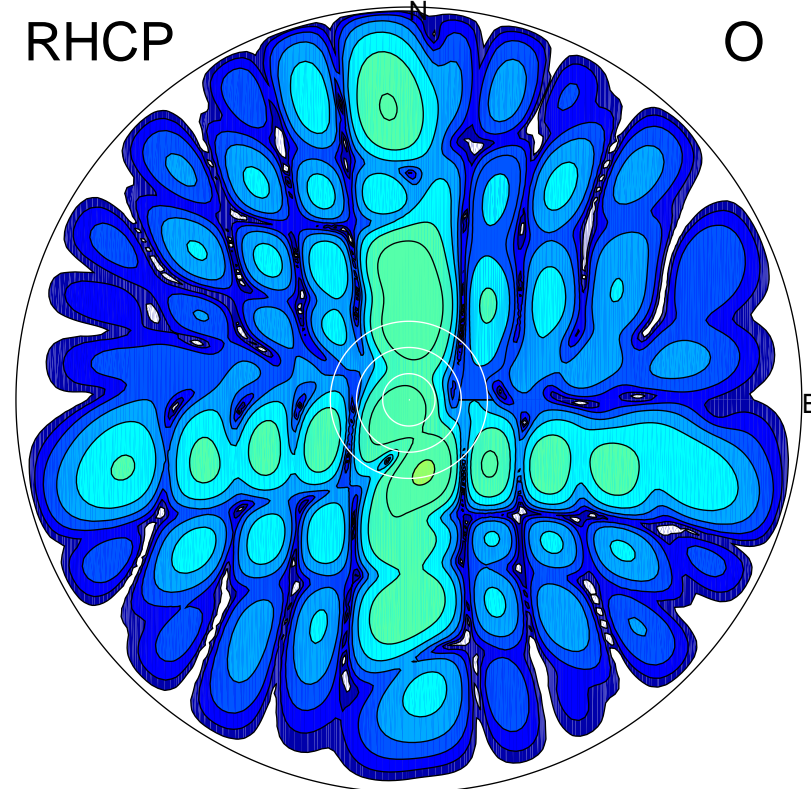
LHCP

X



RHCP

O



ERP 208.4 MW

Peak gain 24.1 dBi at Az 179 Zen 12
RHCP gain 0.9 dBi
N-S peak 24.1 dBi at Zen -11.7
N-S -3 dB beamwidth 10.4 deg.

ERP 4.0 MW

Peak gain 6.9 dBi at Az 168 Zen 17
LHCP gain 20.4 dBi
N-S peak 5.6 dBi at Zen -18.4
N-S -3 dB beamwidth 9.9 deg.