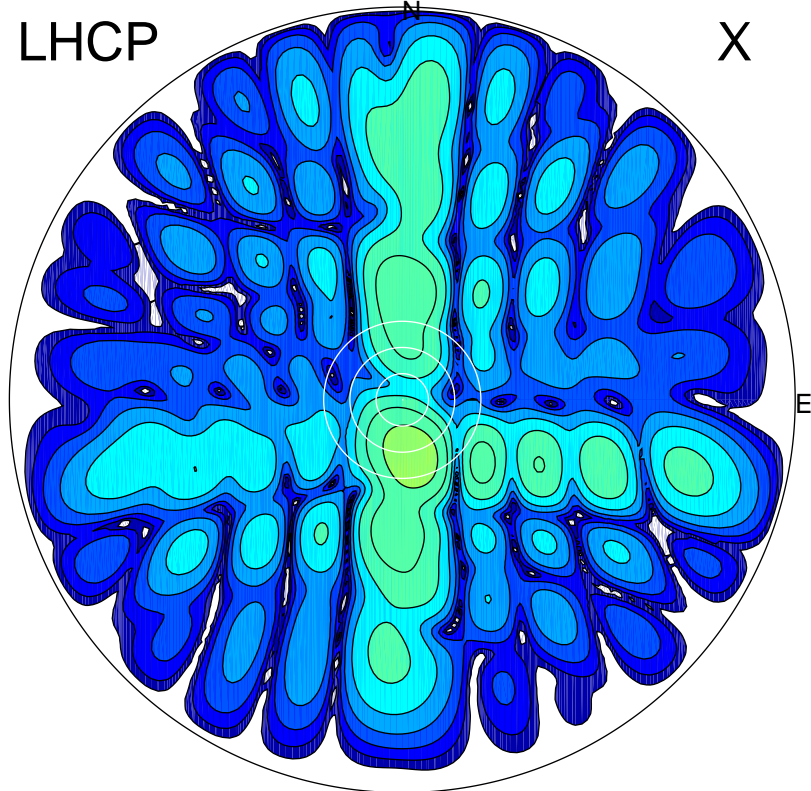


2016-10-22 12:01:57 A2 5.42300000 MHz 804.0 kW

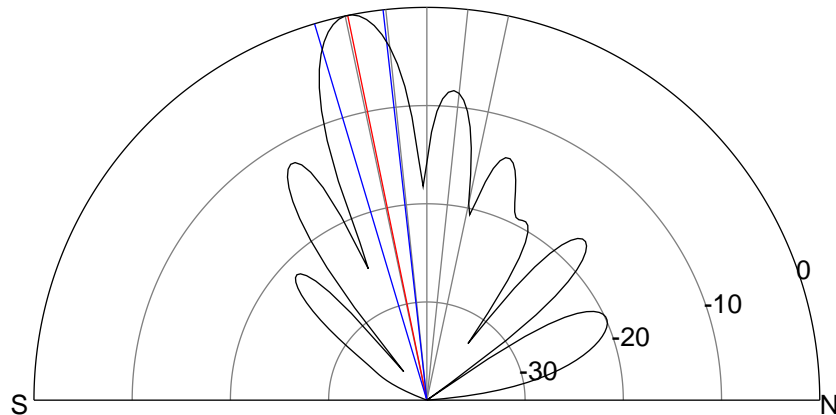
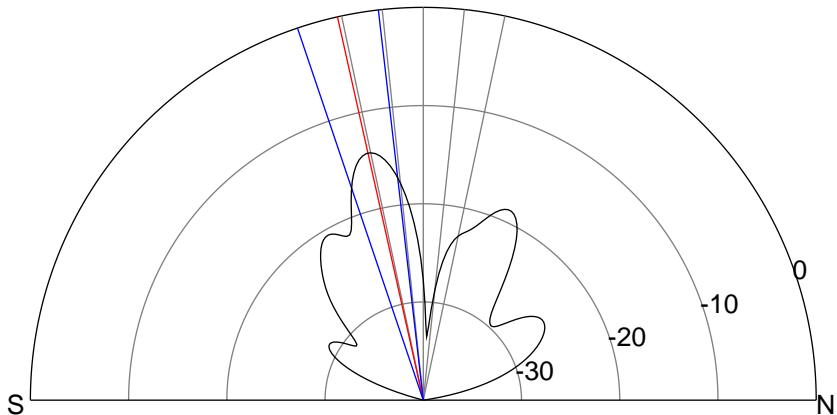
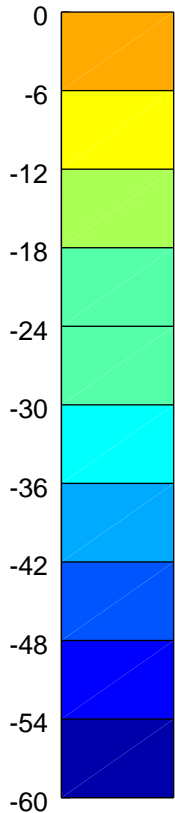
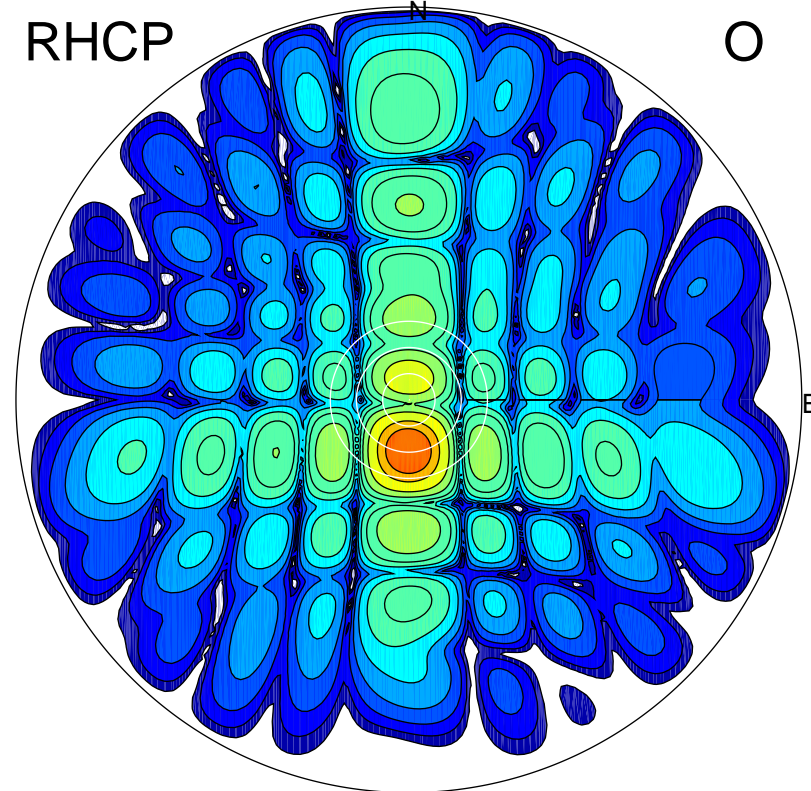
LHCP

X



RHCP

O



### ERP 8.8 MW

Peak gain 10.4 dBi at Az 170 Zen 13  
RHCP gain 23.4 dBi  
N-S peak 9.8 dBi at Zen -12.6  
N-S -3 dB beamwidth 12.1 deg.

### ERP 204.5 MW

Peak gain 24.1 dBi at Az 181 Zen 12  
LHCP gain 9.7 dBi  
N-S peak 24.1 dBi at Zen -11.6  
N-S -3 dB beamwidth 10.2 deg.