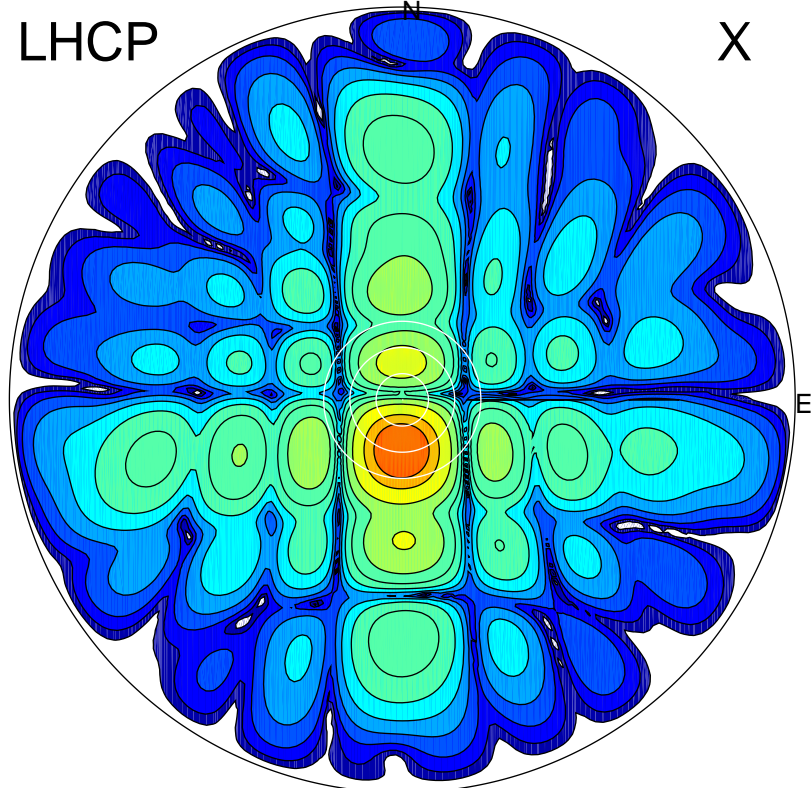


2016-10-21 15:51:57 A2 4.54400000 MHz 791.0 kW

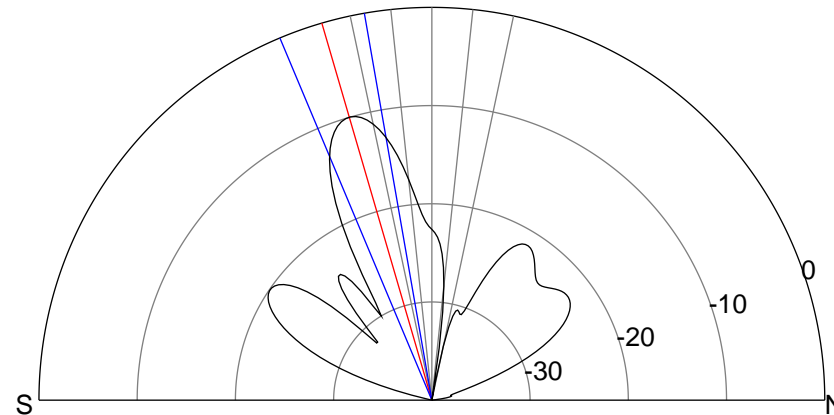
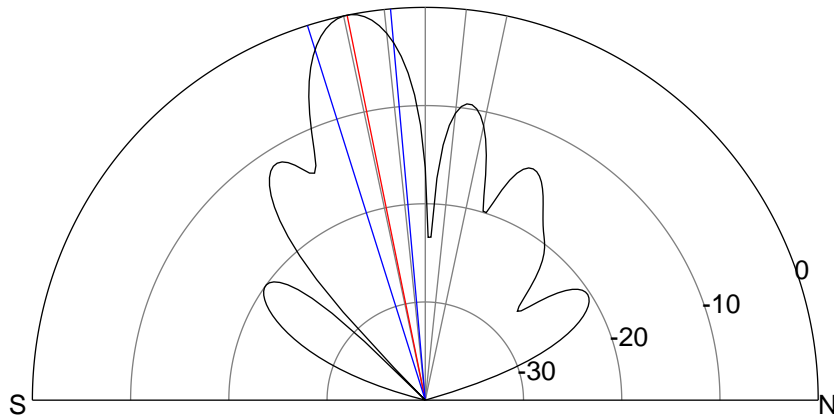
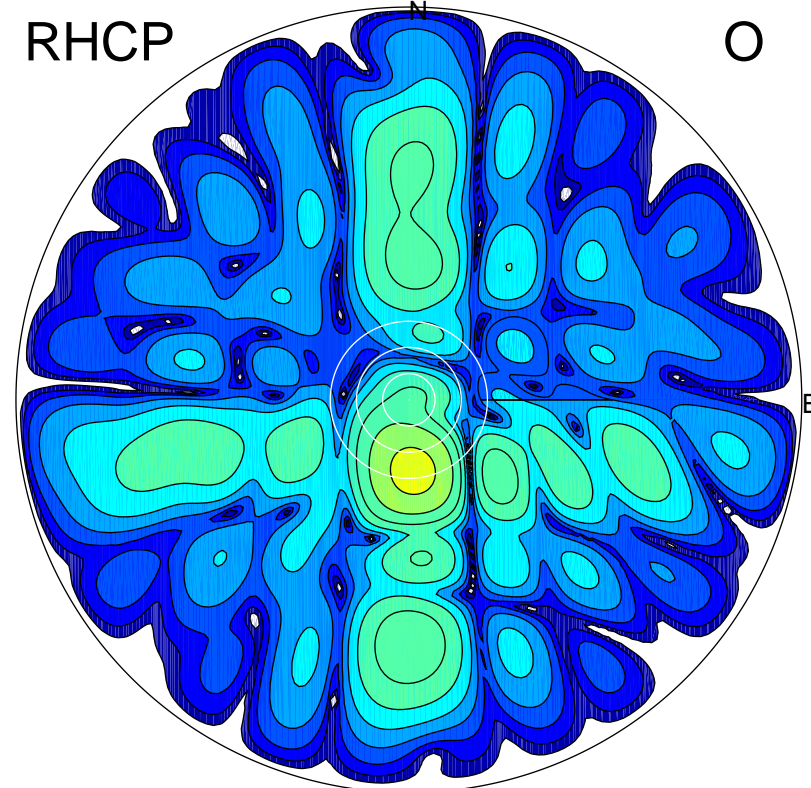
LHCP

X



RHCP

O



**ERP 136.5 MW**

Peak gain 22.4 dBi at Az 181 Zen 11

RHCP gain 10.4 dBi

N-S peak 22.4 dBi at Zen -11.5

N-S -3 dB beamwidth 12.4 deg.

**ERP 13.9 MW**

Peak gain 12.5 dBi at Az 176 Zen 16

LHCP gain 20.8 dBi

N-S peak 12.4 dBi at Zen -16.3

N-S -3 dB beamwidth 12.9 deg.