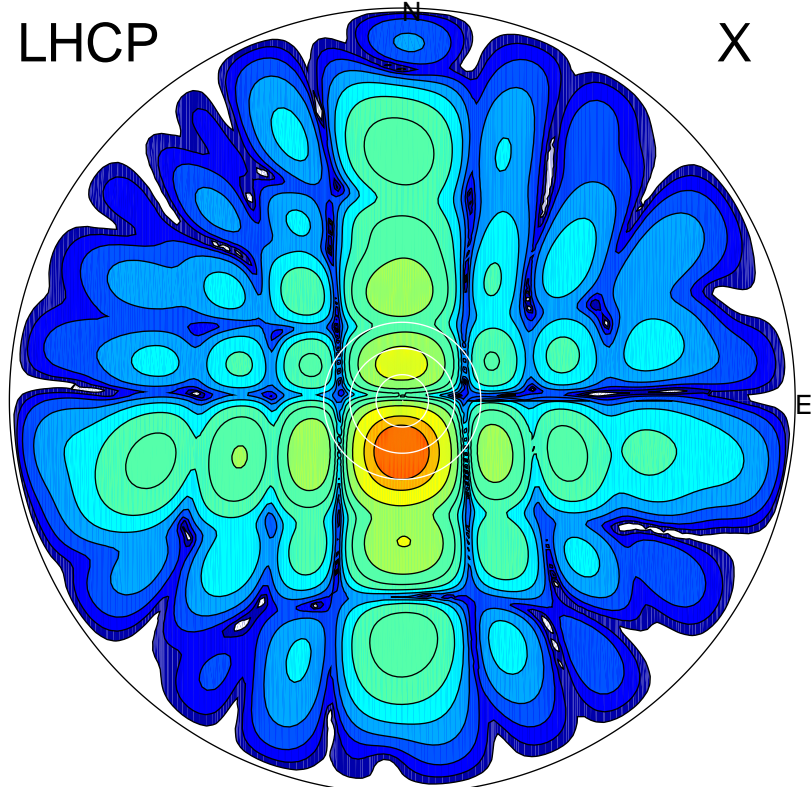


2016-10-21 15:46:57 A2 4.54400000 MHz 793.0 kW

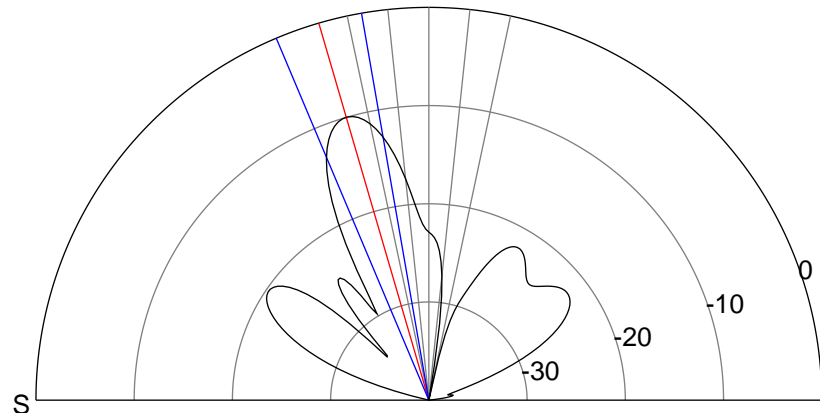
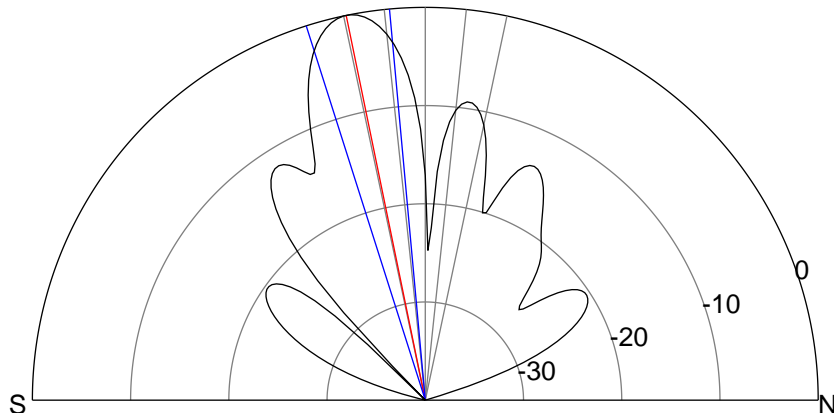
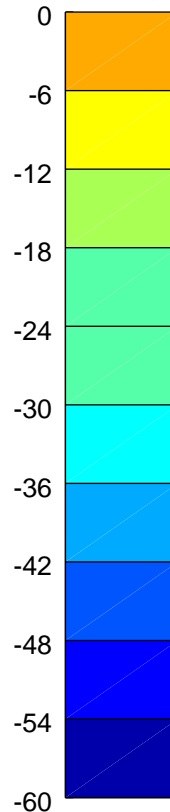
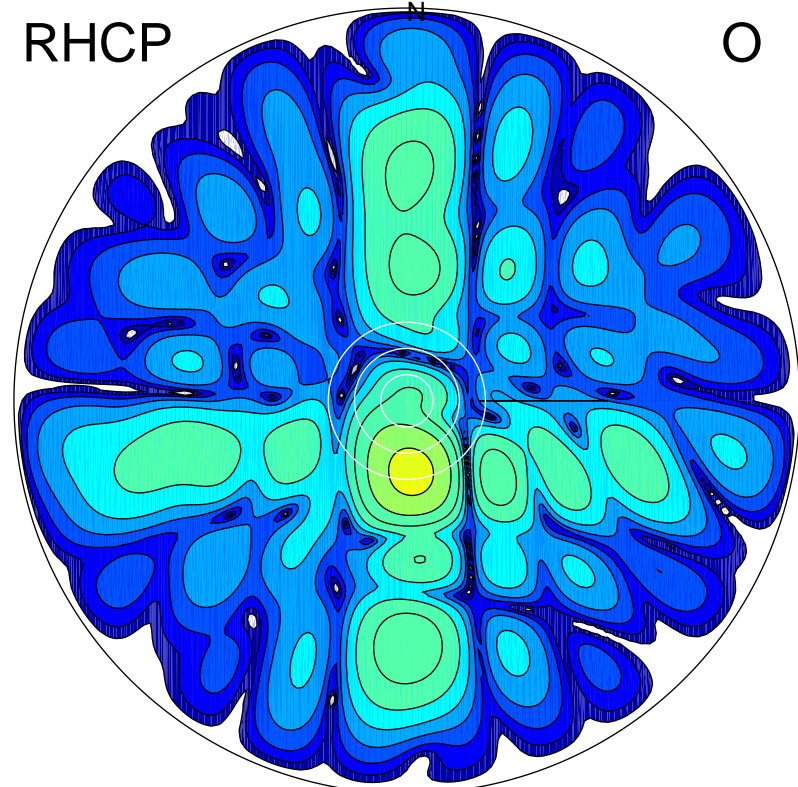
LHCP

X



RHCP

O



ERP 137.0 MW

Peak gain 22.4 dBi at Az 181 Zen 12
RHCP gain 11.1 dBi
N-S peak 22.4 dBi at Zen -11.6
N-S -3 dB beamwidth 12.4 deg.

ERP 14.0 MW

Peak gain 12.5 dBi at Az 176 Zen 16
LHCP gain 20.9 dBi
N-S peak 12.4 dBi at Zen -16.3
N-S -3 dB beamwidth 13.0 deg.