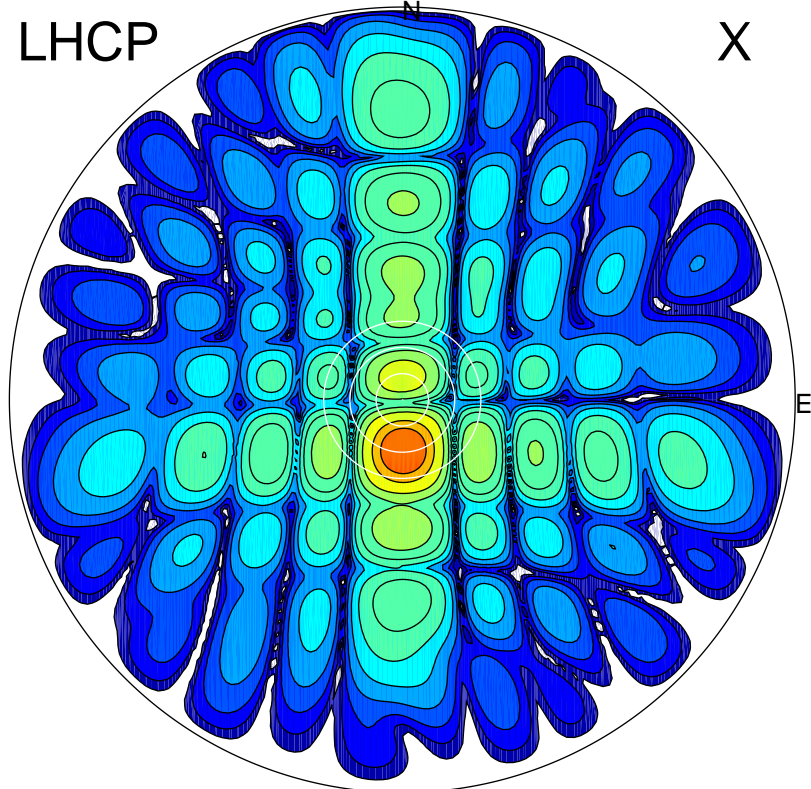


2016-10-21 15:16:10 A2 5.42300000 MHz 810.0 kW

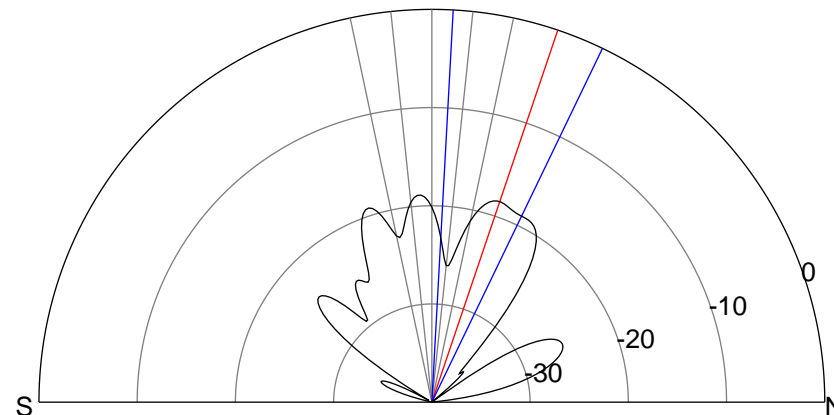
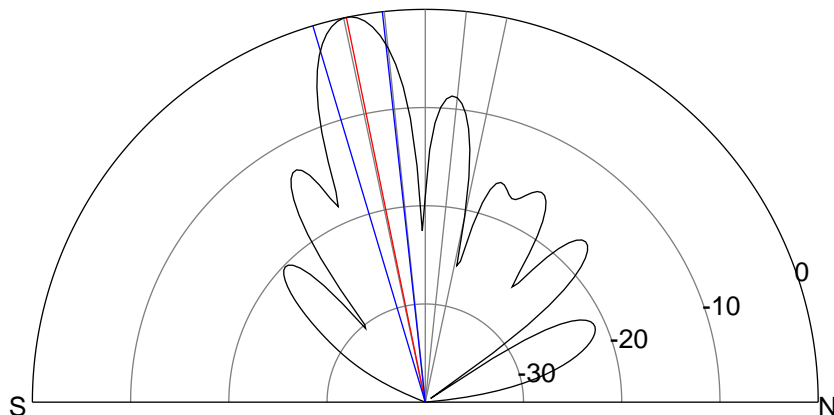
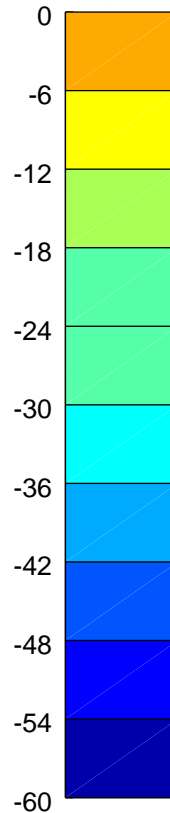
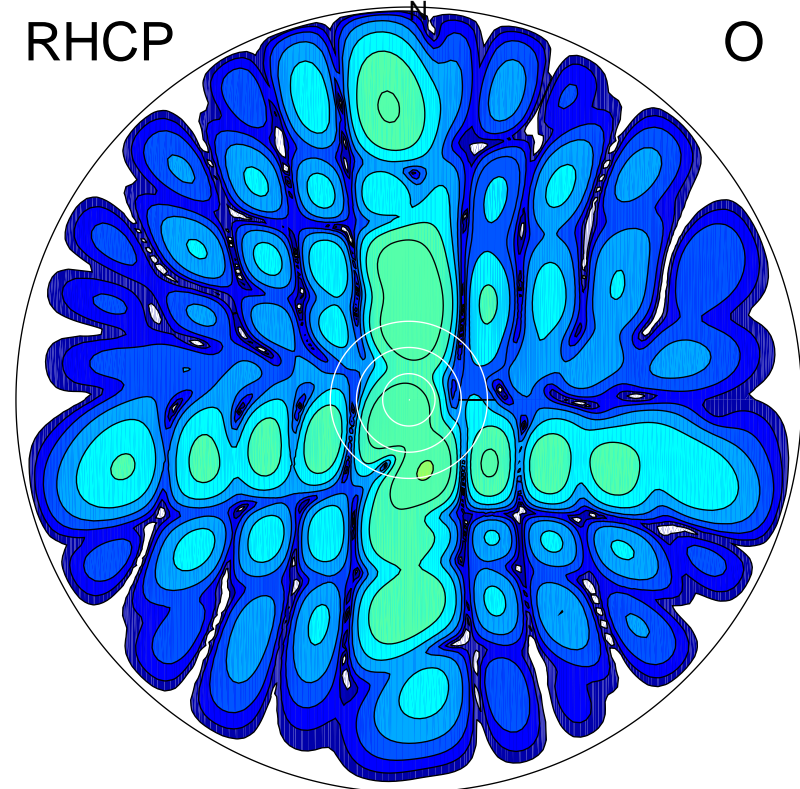
LHCP

X



RHCP

O



### ERP 208.5 MW

Peak gain 24.1 dBi at Az 179 Zen 12  
RHCP gain 1.7 dBi  
N-S peak 24.1 dBi at Zen -11.6  
N-S -3 dB beamwidth 10.4 deg.

### ERP 3.7 MW

Peak gain 6.6 dBi at Az 167 Zen 17  
LHCP gain 20.2 dBi  
N-S peak 5.7 dBi at Zen 18.7  
N-S -3 dB beamwidth 22.6 deg.