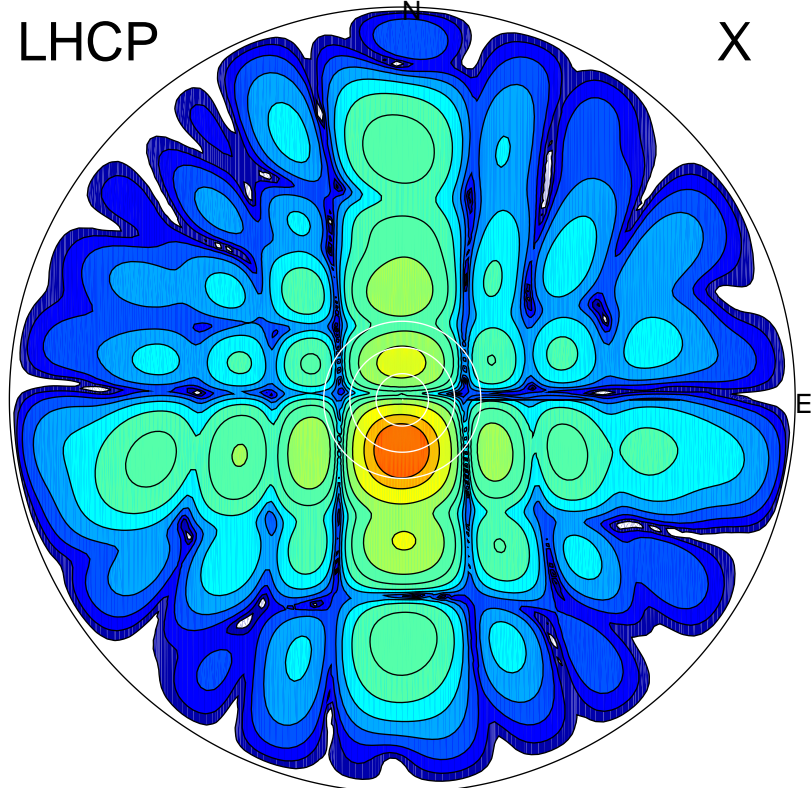


2016-10-21 15:06:57 A2 4.54400000 MHz 794.0 kW

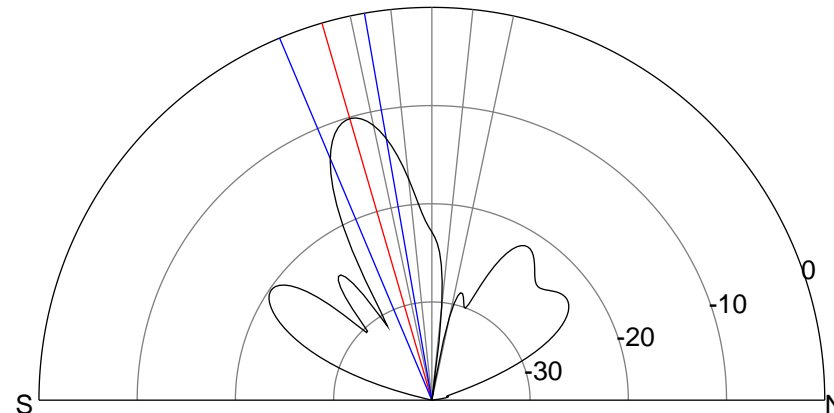
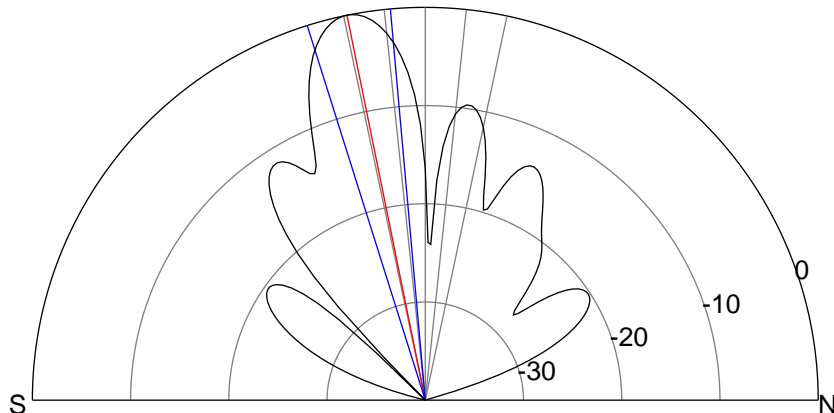
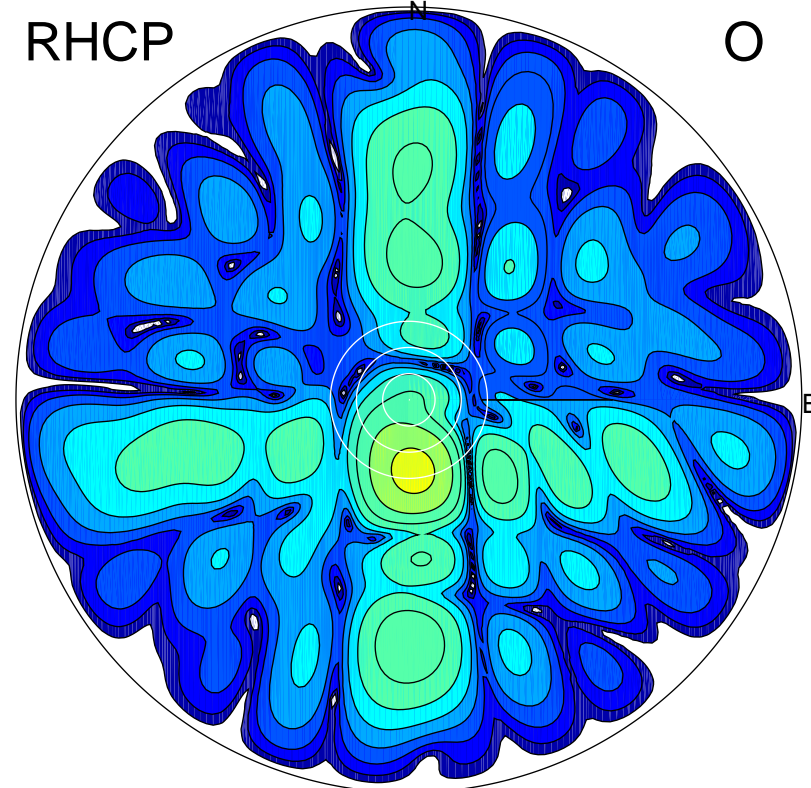
LHCP

X



RHCP

O



ERP 137.6 MW

Peak gain 22.4 dBi at Az 182 Zen 11

RHCP gain 10.3 dBi

N-S peak 22.4 dBi at Zen -11.5

N-S -3 dB beamwidth 12.4 deg.

ERP 13.6 MW

Peak gain 12.3 dBi at Az 176 Zen 16

LHCP gain 20.8 dBi

N-S peak 12.2 dBi at Zen -16.2

N-S -3 dB beamwidth 12.9 deg.