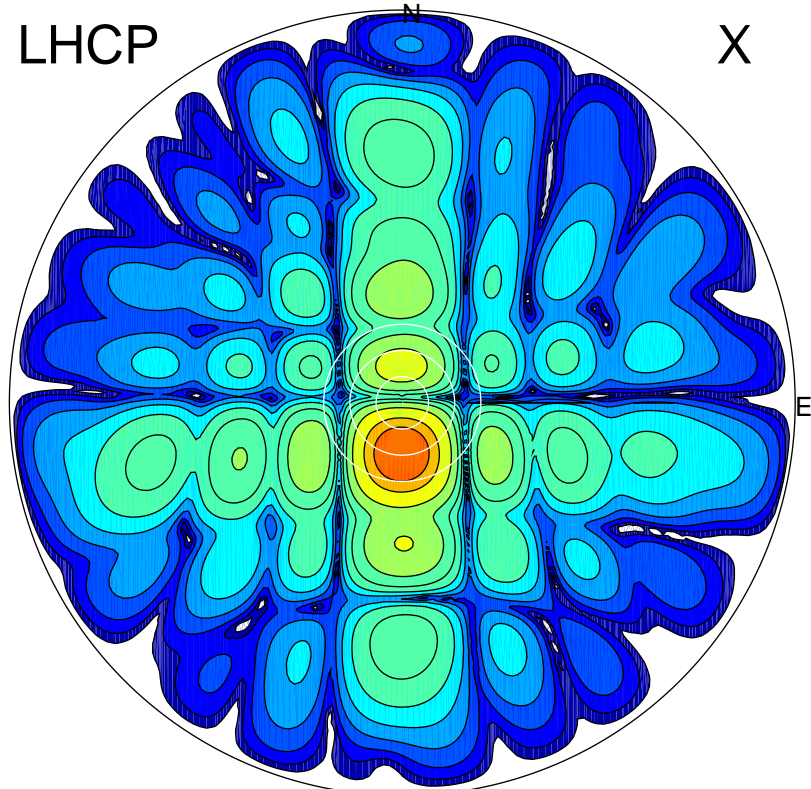


2016-10-21 15:01:57 A2 4.54400000 MHz 793.0 kW

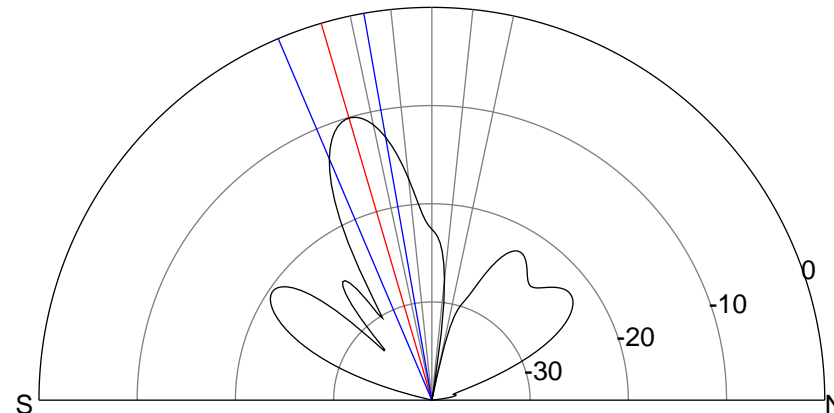
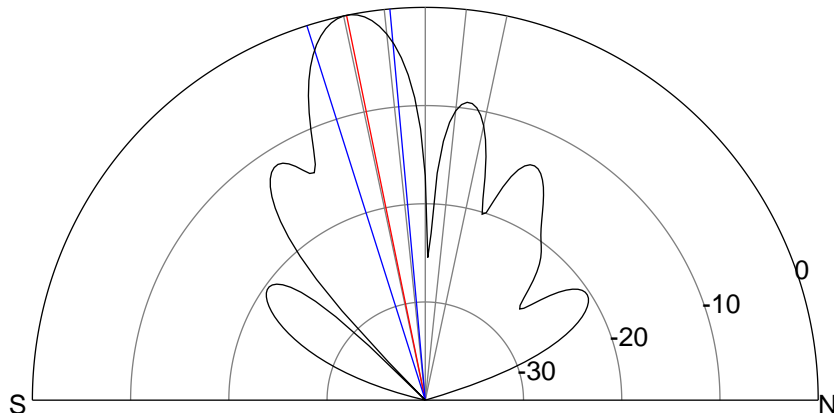
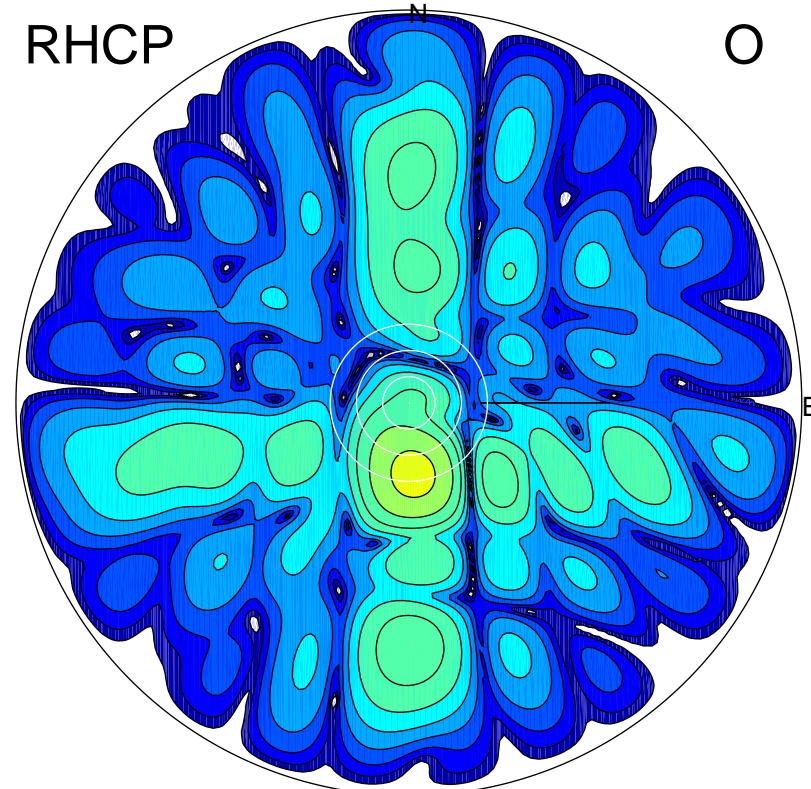
LHCP

X



RHCP

O



ERP 137.3 MW

Peak gain 22.4 dBi at Az 181 Zen 12
RHCP gain 11.0 dBi
N-S peak 22.4 dBi at Zen -11.6
N-S -3 dB beamwidth 12.4 deg.

ERP 13.8 MW

Peak gain 12.4 dBi at Az 176 Zen 16
LHCP gain 20.9 dBi
N-S peak 12.3 dBi at Zen -16.4
N-S -3 dB beamwidth 13.0 deg.