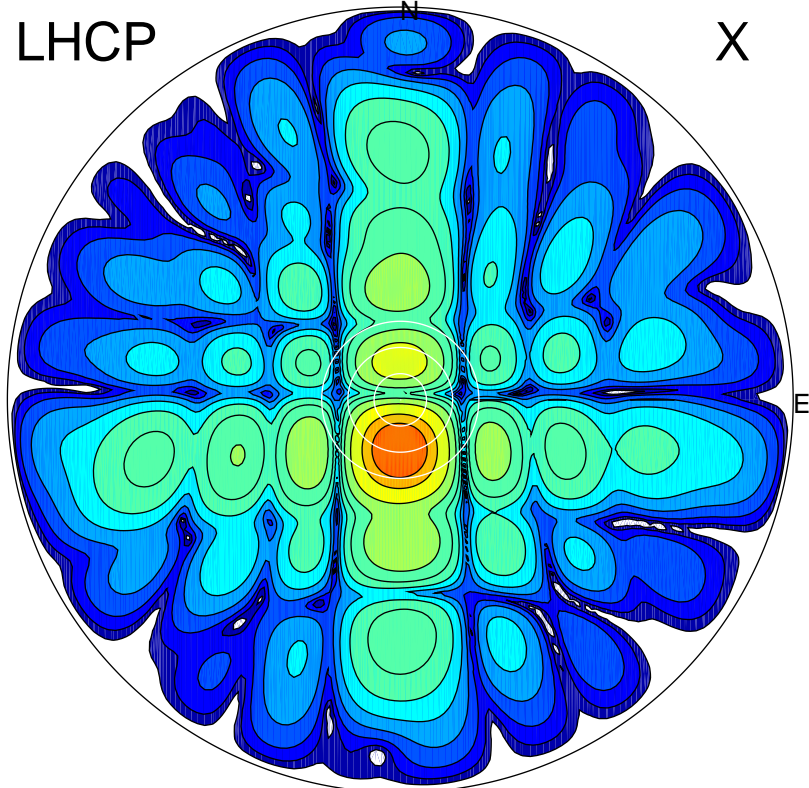


2016-10-21 14:31:10 A2 4.54400000 MHz 801.0 kW

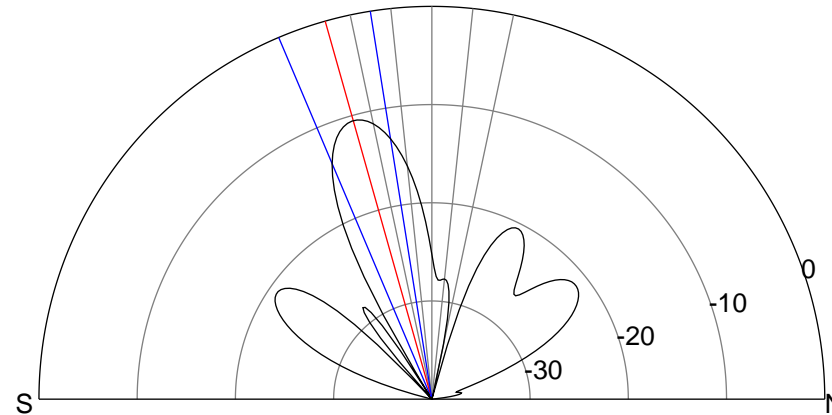
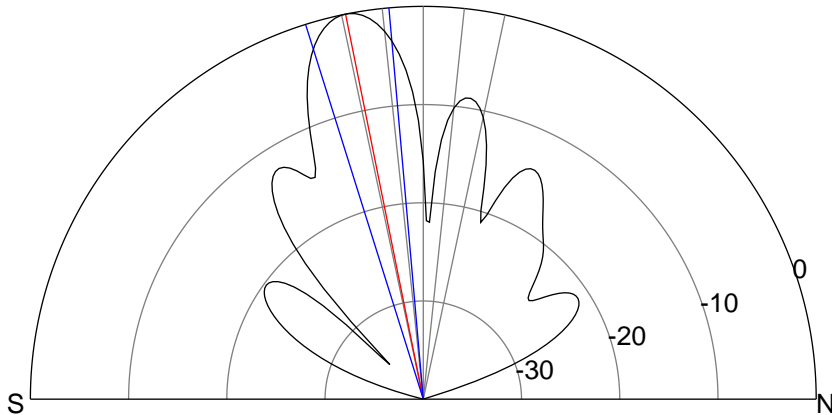
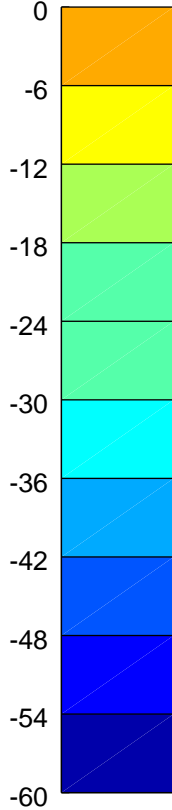
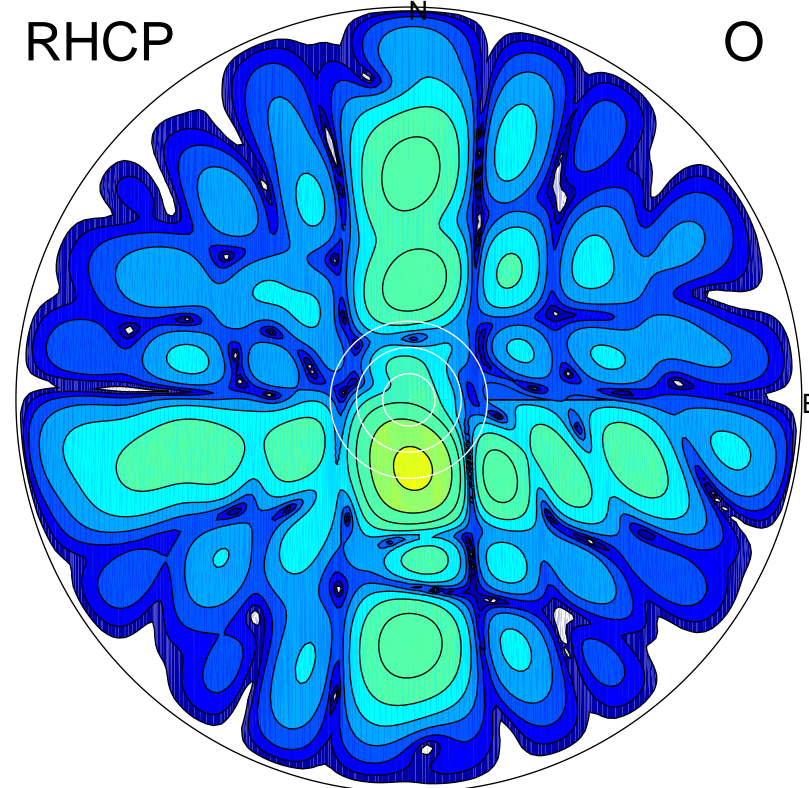
LHCP

X



RHCP

O



ERP 139.1 MW

Peak gain 22.4 dBi at Az 182 Zen 11
RHCP gain 10.5 dBi
N-S peak 22.4 dBi at Zen -11.4
N-S -3 dB beamwidth 12.4 deg.

ERP 12.5 MW

Peak gain 11.9 dBi at Az 176 Zen 16
LHCP gain 20.8 dBi
N-S peak 11.9 dBi at Zen -15.8
N-S -3 dB beamwidth 13.9 deg.