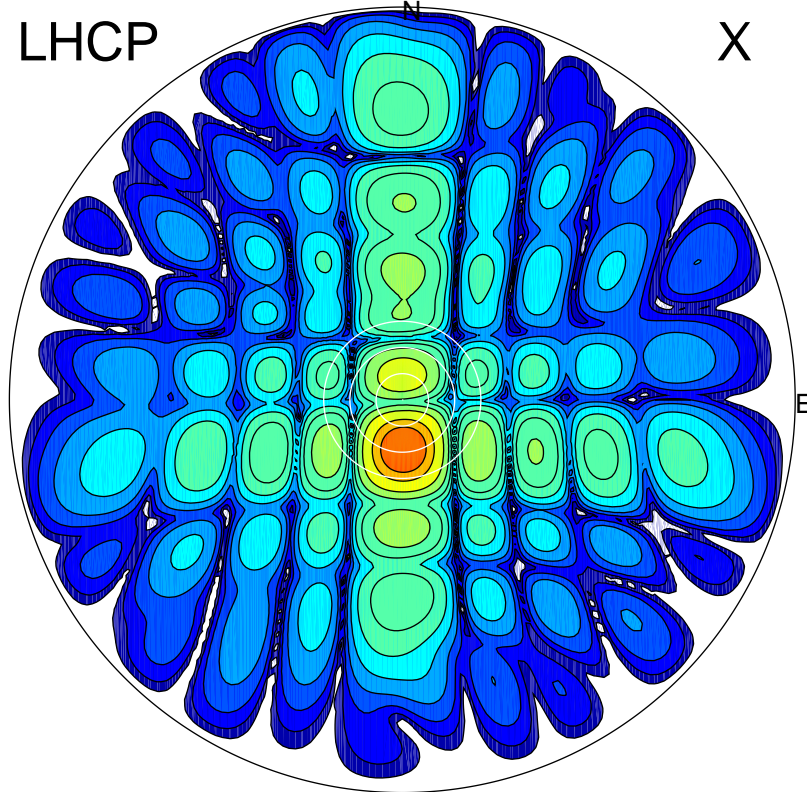


2016-10-21 13:31:10 A2 5.42300000 MHz 785.0 kW

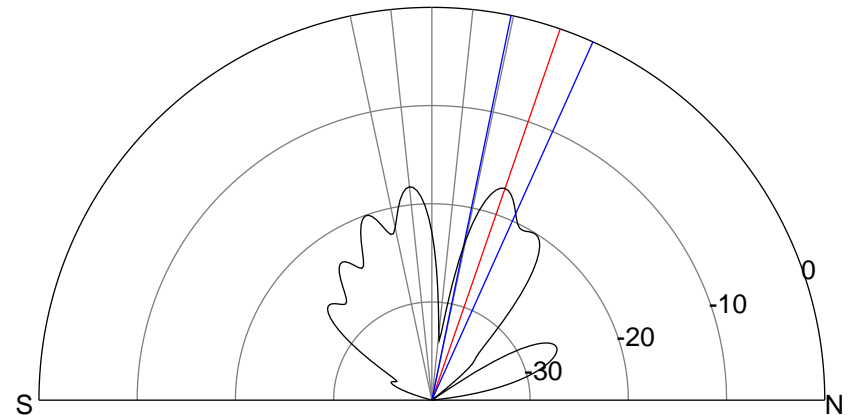
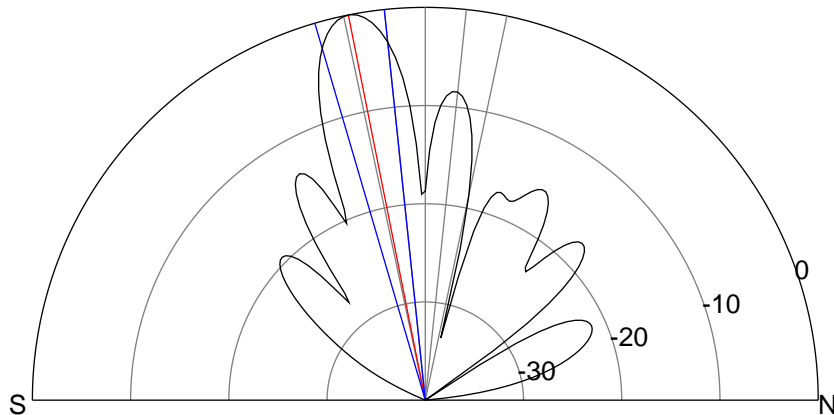
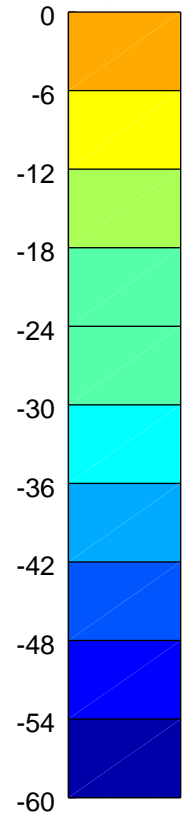
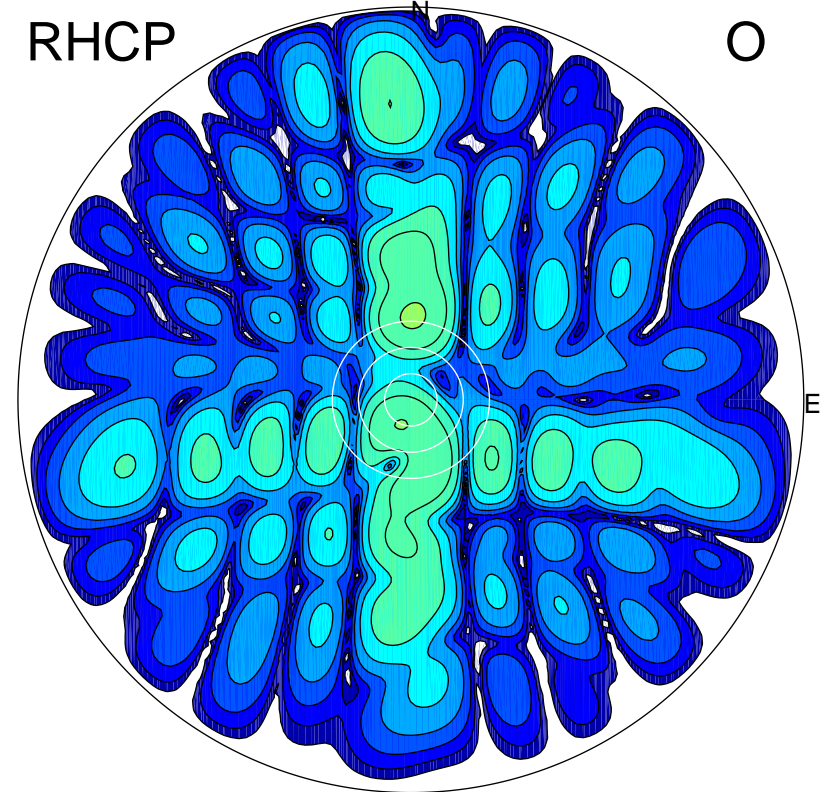
LHCP

X



RHCP

O



ERP 202.6 MW

Peak gain 24.1 dBi at Az 179 Zen 11
RHCP gain 3.1 dBi
N-S peak 24.1 dBi at Zen -11.3
N-S -3 dB beamwidth 10.3 deg.

ERP 3.9 MW

Peak gain 6.9 dBi at Az 2 Zen 19
LHCP gain 6.4 dBi
N-S peak 6.9 dBi at Zen 19.1
N-S -3 dB beamwidth 12.6 deg.