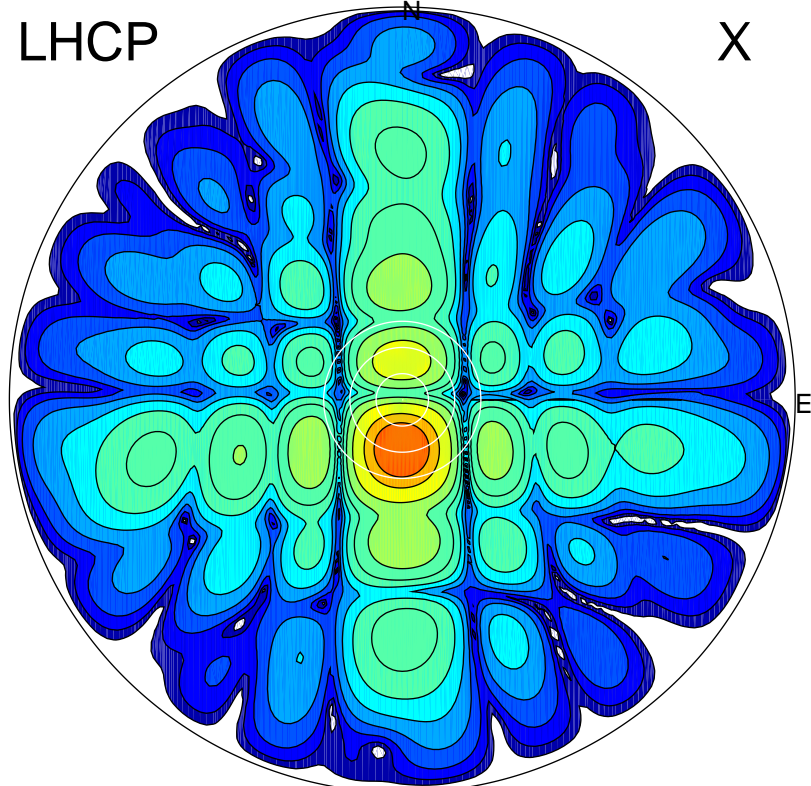


2016-10-21 13:01:10 A2 4.54400000 MHz 805.0 kW

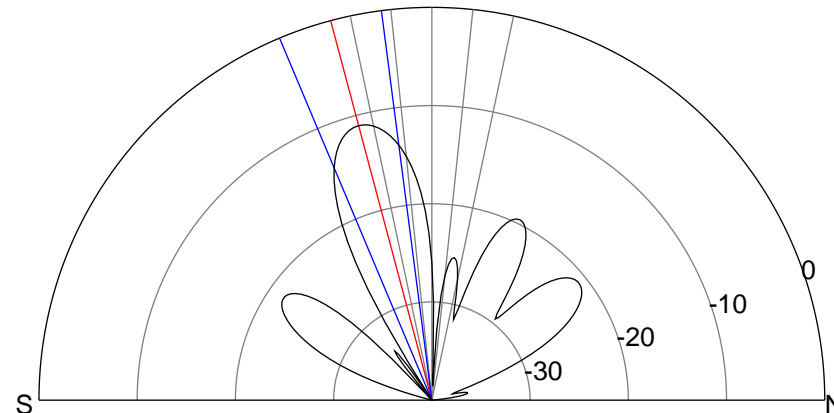
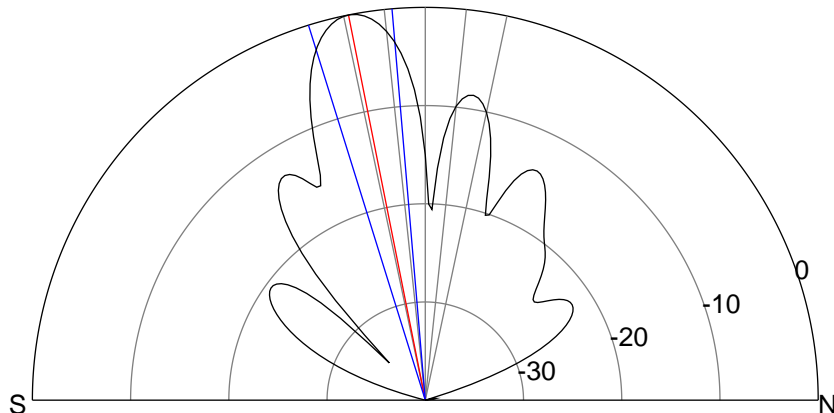
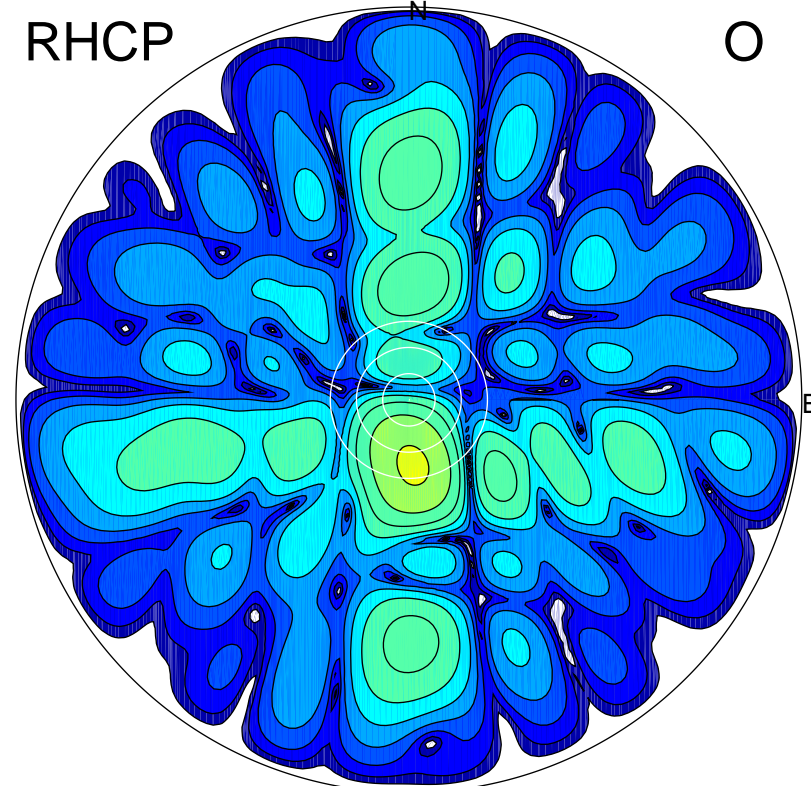
LHCP

X



RHCP

O



ERP 140.3 MW

Peak gain 22.4 dBi at Az 181 Zen 11

RHCP gain 10.6 dBi

N-S peak 22.4 dBi at Zen -11.3

N-S -3 dB beamwidth 12.4 deg.

ERP 11.2 MW

Peak gain 11.4 dBi at Az 176 Zen 15

LHCP gain 21.3 dBi

N-S peak 11.3 dBi at Zen -14.9

N-S -3 dB beamwidth 15.4 deg.