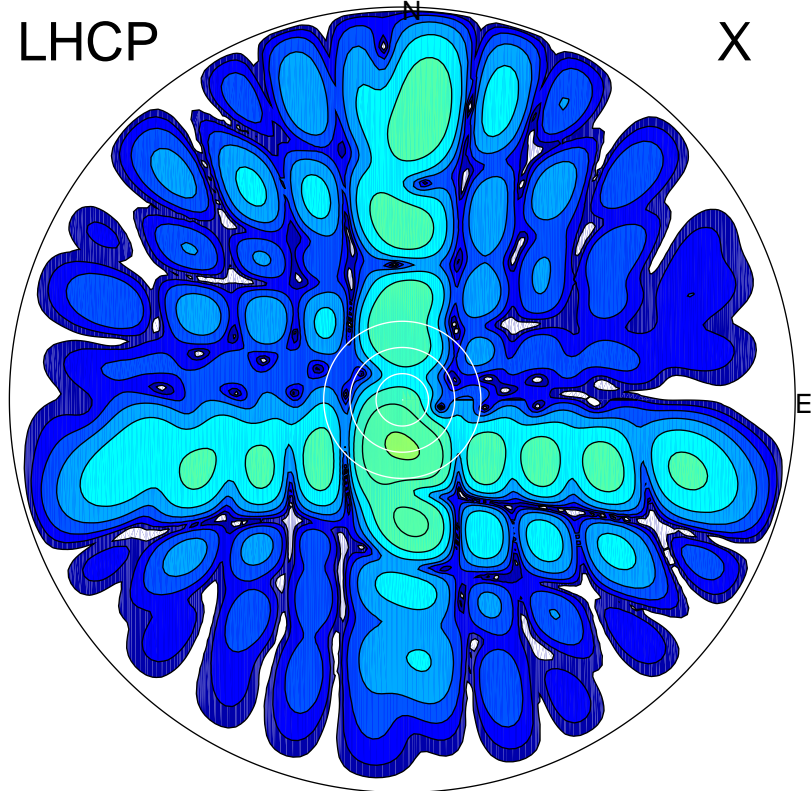


2016-10-21 11:41:19 A2 5.42300000 MHz 871.0 kW

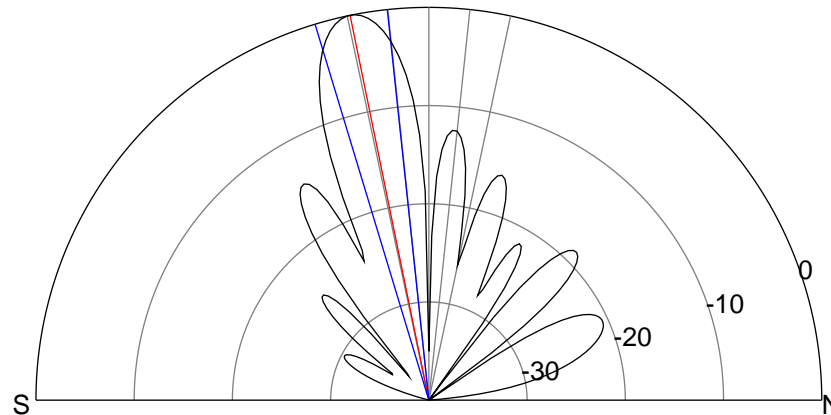
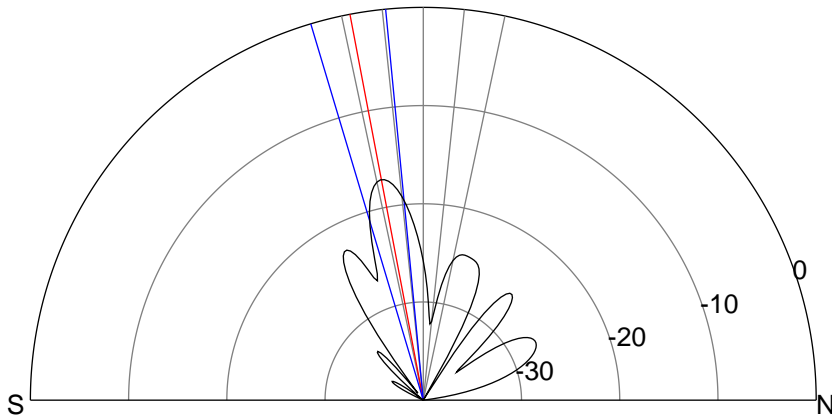
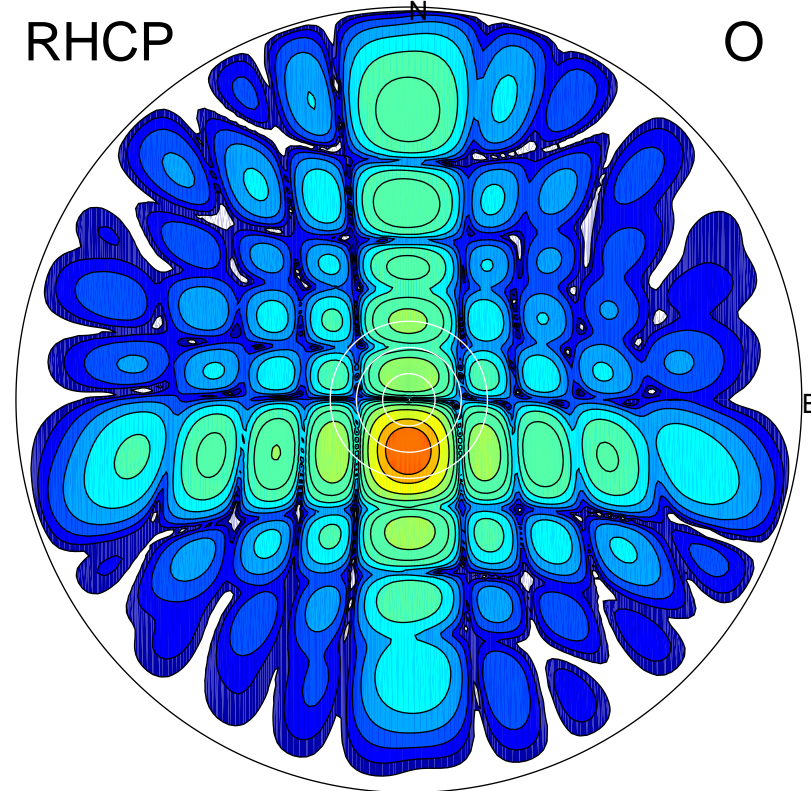
LHCP

X



RHCP

O



ERP 4.7 MW

Peak gain 7.3 dBi at Az 180 Zen 11
RHCP gain 24.4 dBi
N-S peak 7.3 dBi at Zen -10.8
N-S -3 dB beamwidth 11.1 deg.

ERP 242.7 MW

Peak gain 24.5 dBi at Az 181 Zen 12
LHCP gain 7.1 dBi
N-S peak 24.5 dBi at Zen -11.6
N-S -3 dB beamwidth 10.8 deg.