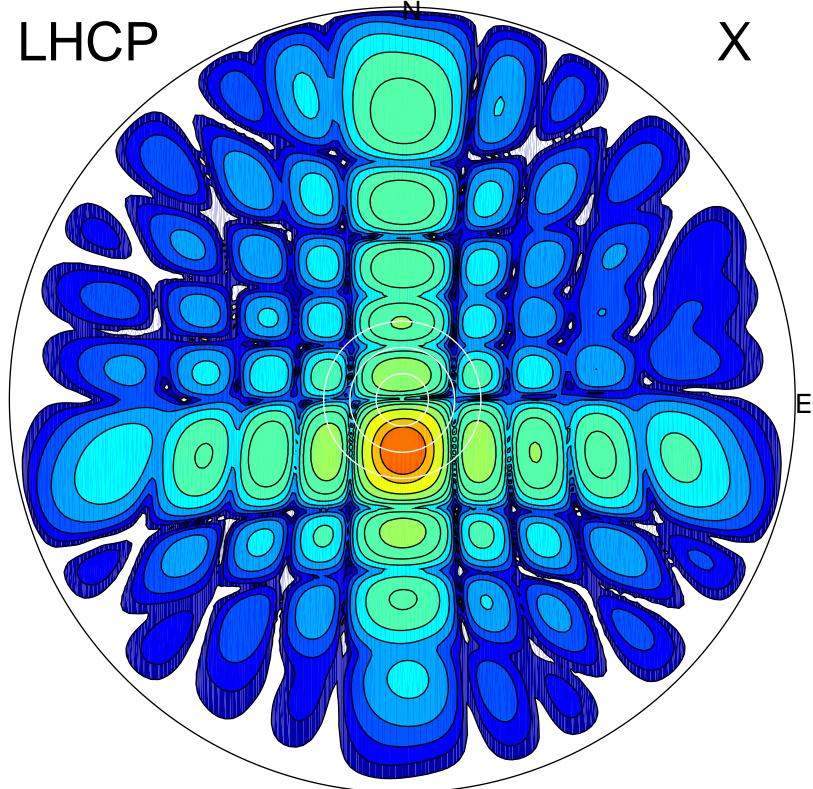


2016-10-21 11:26:19 A2 5.42300000 MHz 885.0 kW

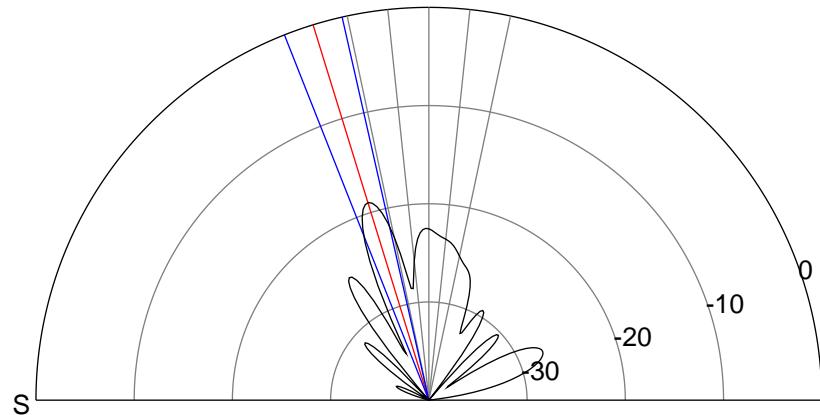
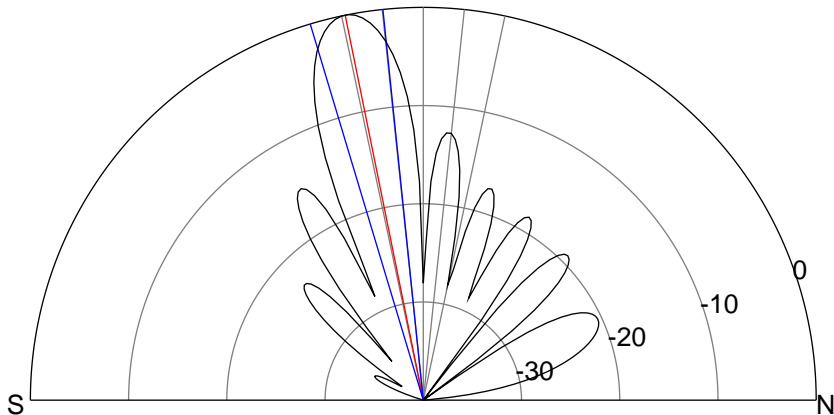
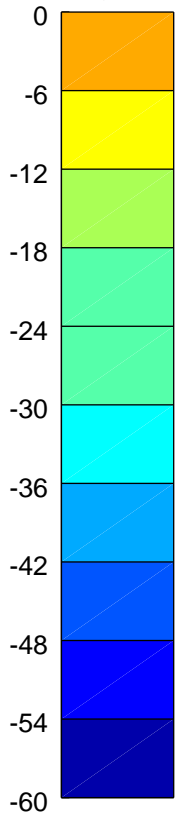
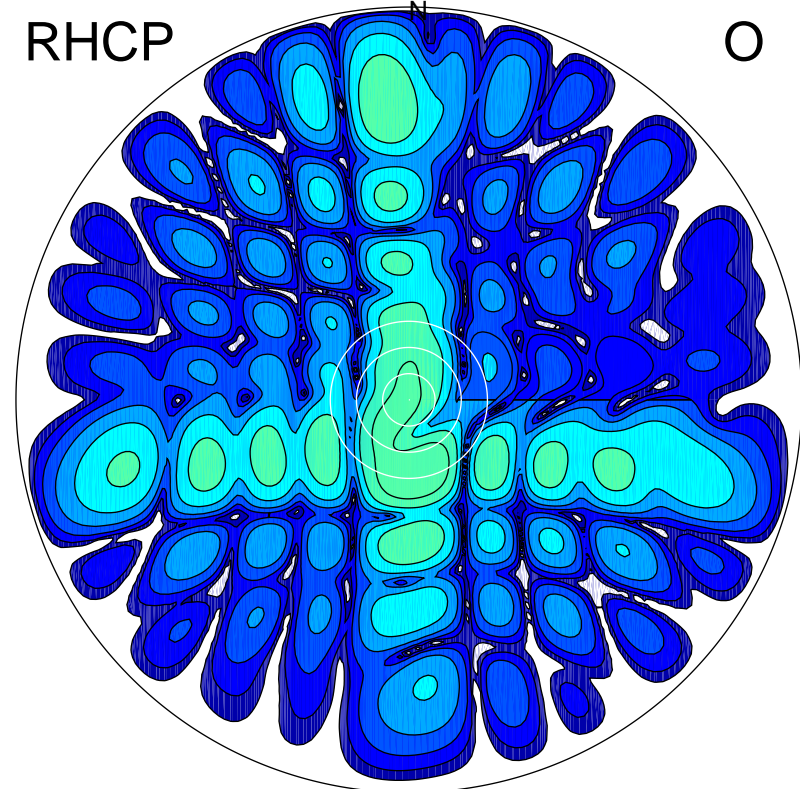
LHCP

X



RHCP

O



ERP 248.2 MW

Peak gain 24.5 dBi at Az 179 Zen 12
RHCP gain 1.6 dBi
N-S peak 24.5 dBi at Zen -11.5
N-S -3 dB beamwidth 10.8 deg.

ERP 3.4 MW

Peak gain 5.9 dBi at Az 172 Zen 17
LHCP gain 21.2 dBi
N-S peak 5.5 dBi at Zen -17.1
N-S -3 dB beamwidth 8.8 deg.