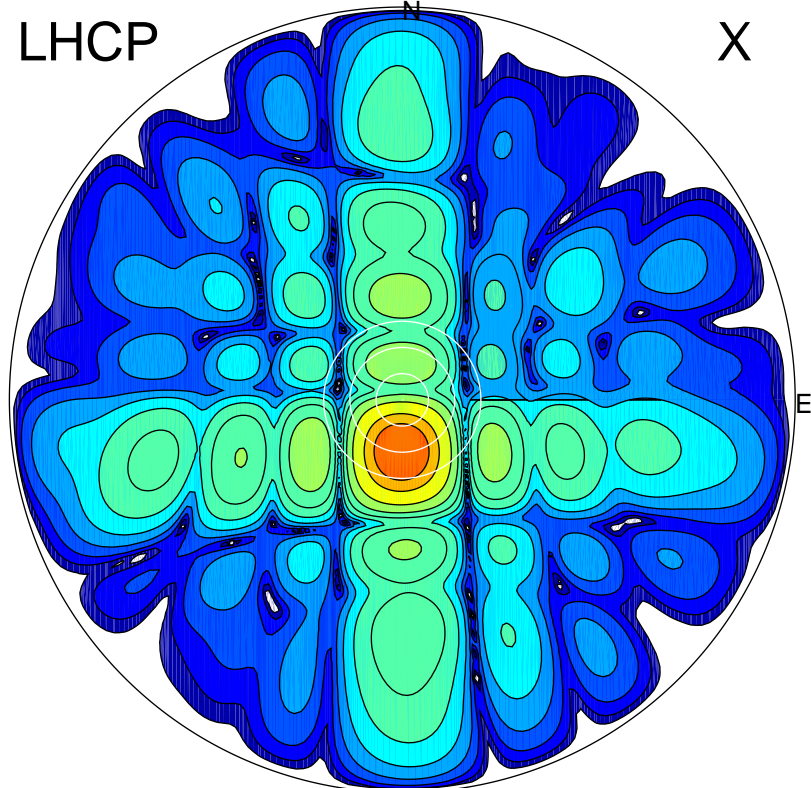


2016-10-20 15:20:57 A2 4.54400000 MHz 794.0 kW

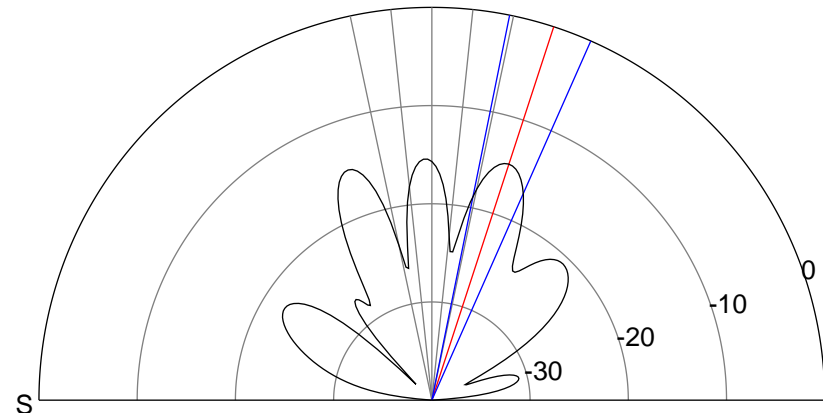
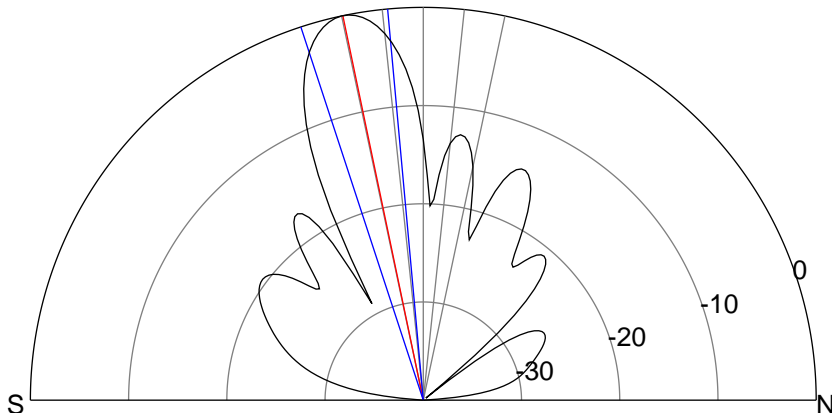
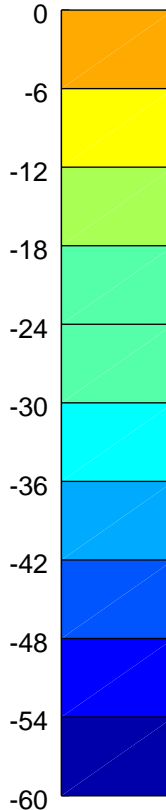
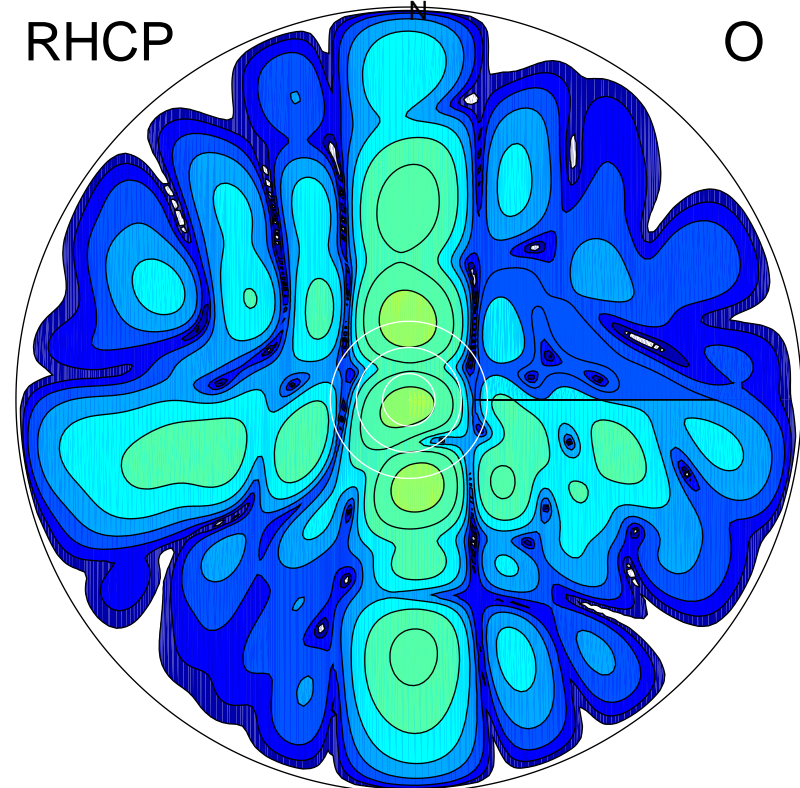
LHCP

X



RHCP

O



### ERP 146.6 MW

Peak gain 22.7 dBi at Az 182 Zen 12  
RHCP gain -1.4 dBi  
N-S peak 22.7 dBi at Zen -11.8  
N-S -3 dB beamwidth 12.9 deg.

### ERP 5.0 MW

Peak gain 8.0 dBi at Az 174 Zen 20  
LHCP gain 17.7 dBi  
N-S peak 7.9 dBi at Zen 18.1  
N-S -3 dB beamwidth 12.4 deg.