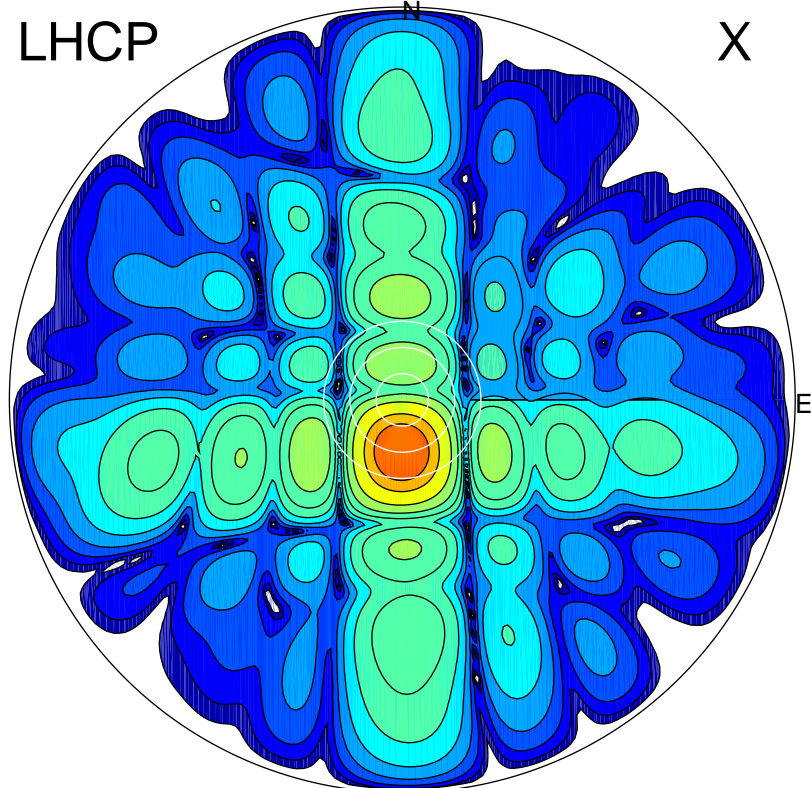


2016-10-20 14:46:27 A2 4.54400000 MHz 800.0 kW

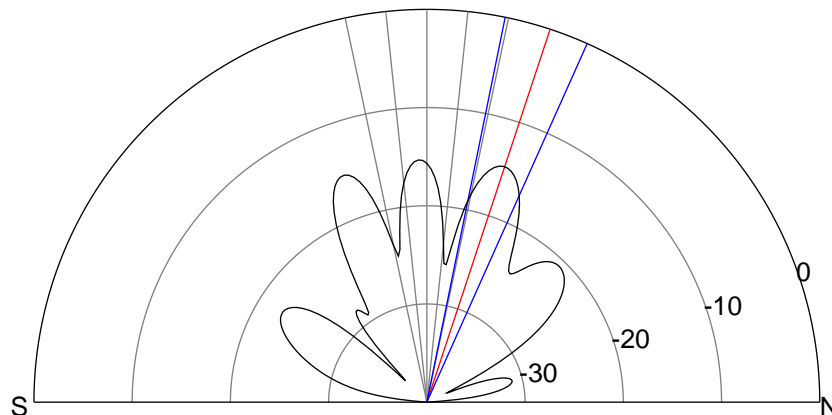
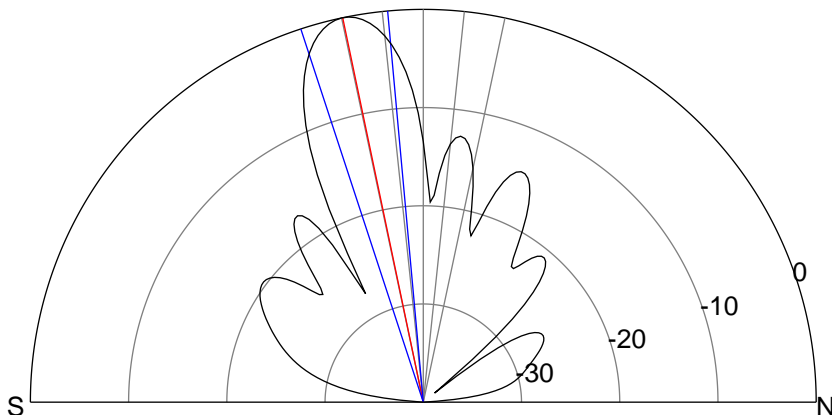
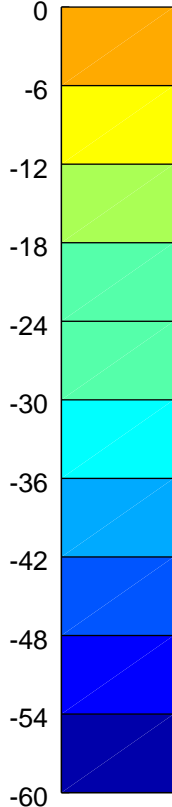
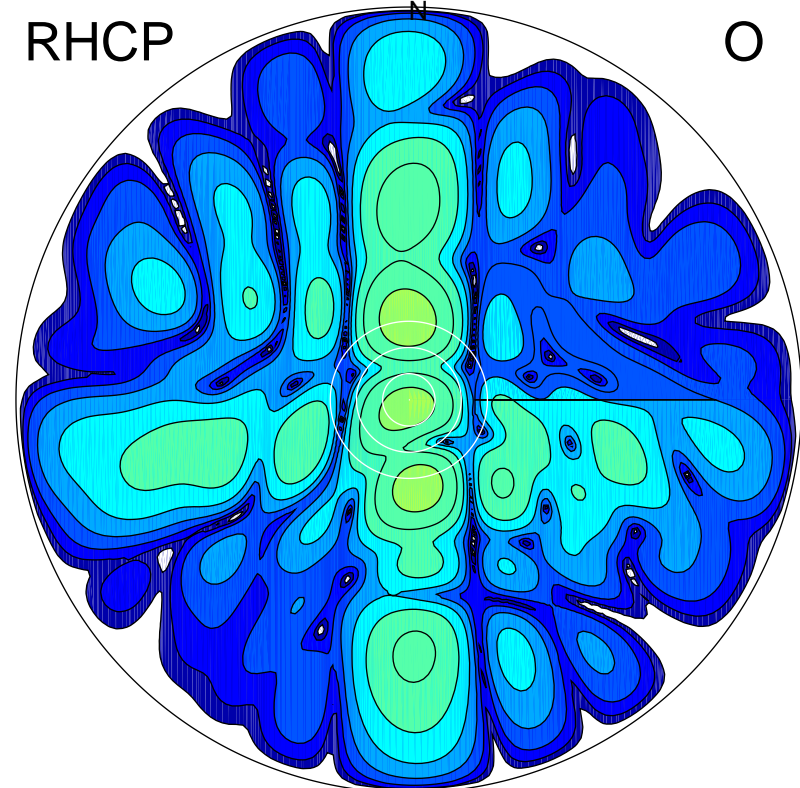
LHCP

X



RHCP

O



ERP 147.6 MW

Peak gain 22.7 dBi at Az 182 Zen 12
RHCP gain -1.0 dBi
N-S peak 22.7 dBi at Zen -11.8
N-S -3 dB beamwidth 13.0 deg.

ERP 4.9 MW

Peak gain 7.9 dBi at Az 359 Zen 18
LHCP gain 3.6 dBi
N-S peak 7.9 dBi at Zen 18.3
N-S -3 dB beamwidth 12.6 deg.