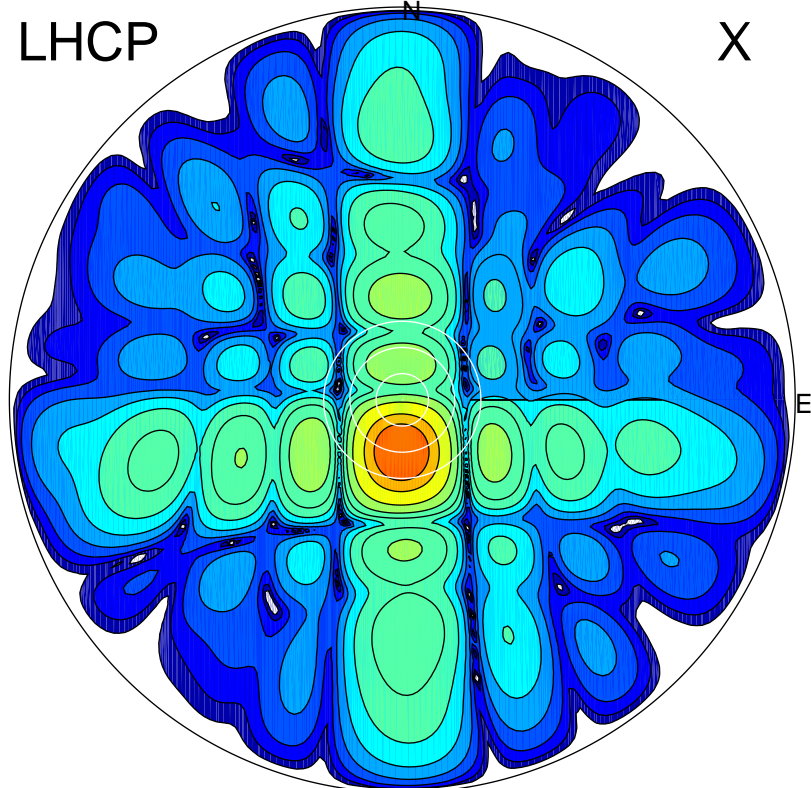


2016-10-20 14:35:57 A2 4.54400000 MHz 793.0 kW

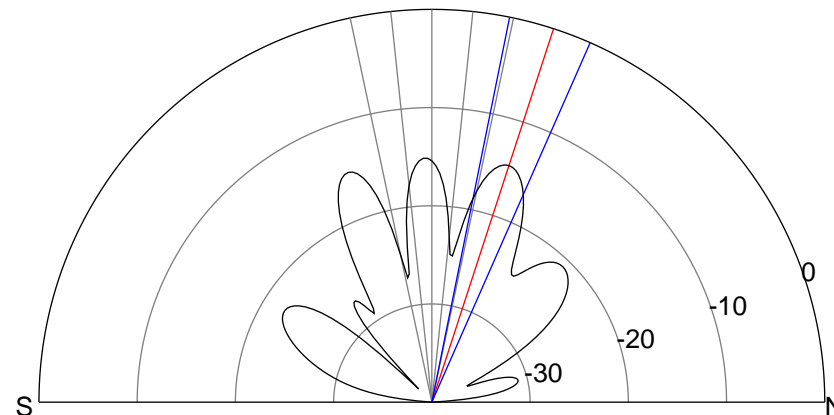
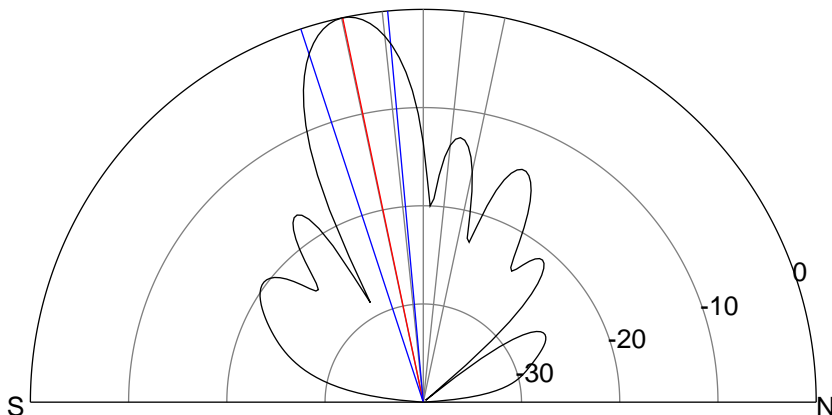
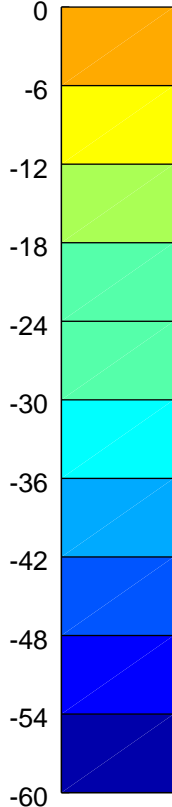
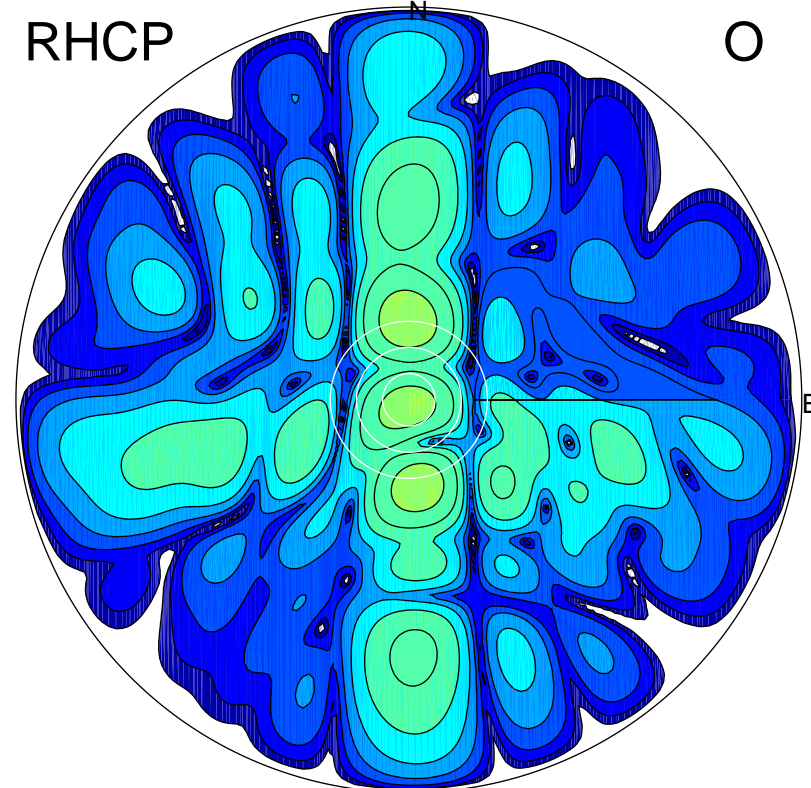
LHCP

X



RHCP

O



ERP 146.5 MW

Peak gain 22.7 dBi at Az 181 Zen 12
RHCP gain -2.0 dBi
N-S peak 22.7 dBi at Zen -11.8
N-S -3 dB beamwidth 13.0 deg.

ERP 5.0 MW

Peak gain 8.0 dBi at Az 359 Zen 18
LHCP gain 3.7 dBi
N-S peak 8.0 dBi at Zen 18.0
N-S -3 dB beamwidth 12.3 deg.