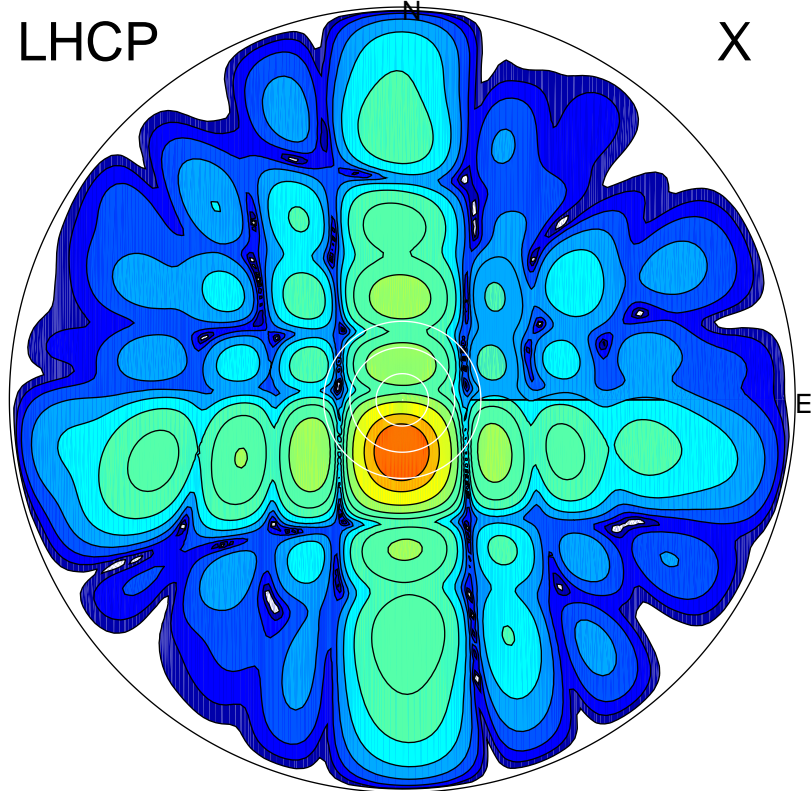


2016-10-20 14:31:27 A2 4.54400000 MHz 799.0 kW

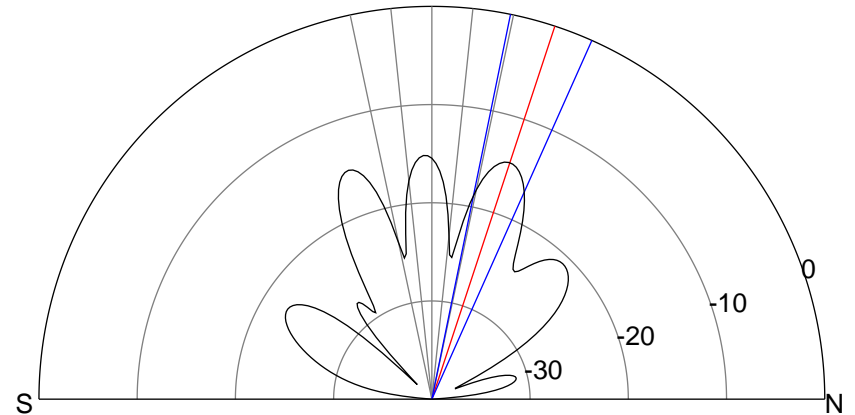
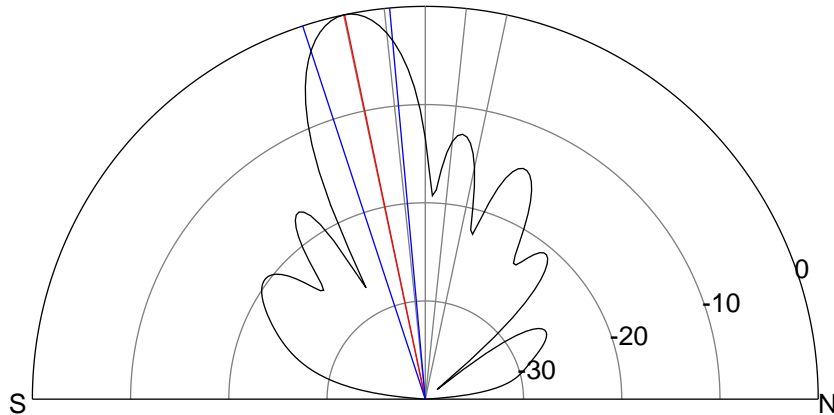
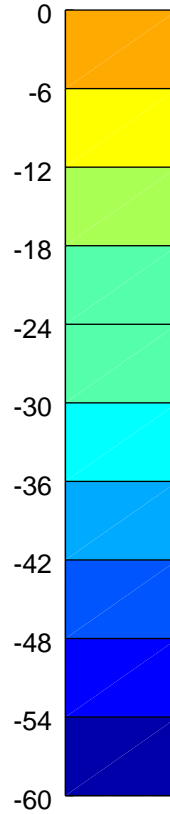
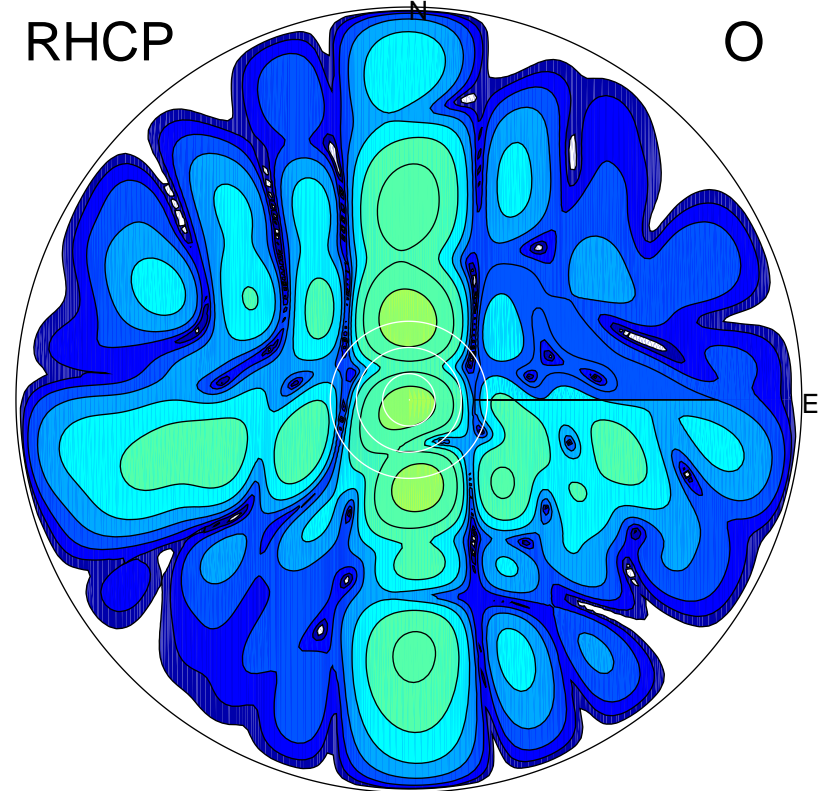
LHCP

X



RHCP

O



ERP 147.1 MW

Peak gain 22.7 dBi at Az 182 Zen 12
RHCP gain -1.1 dBi
N-S peak 22.7 dBi at Zen -11.9
N-S -3 dB beamwidth 13.0 deg.

ERP 5.1 MW

Peak gain 8.0 dBi at Az 359 Zen 18
LHCP gain 3.7 dBi
N-S peak 8.0 dBi at Zen 18.2
N-S -3 dB beamwidth 12.5 deg.