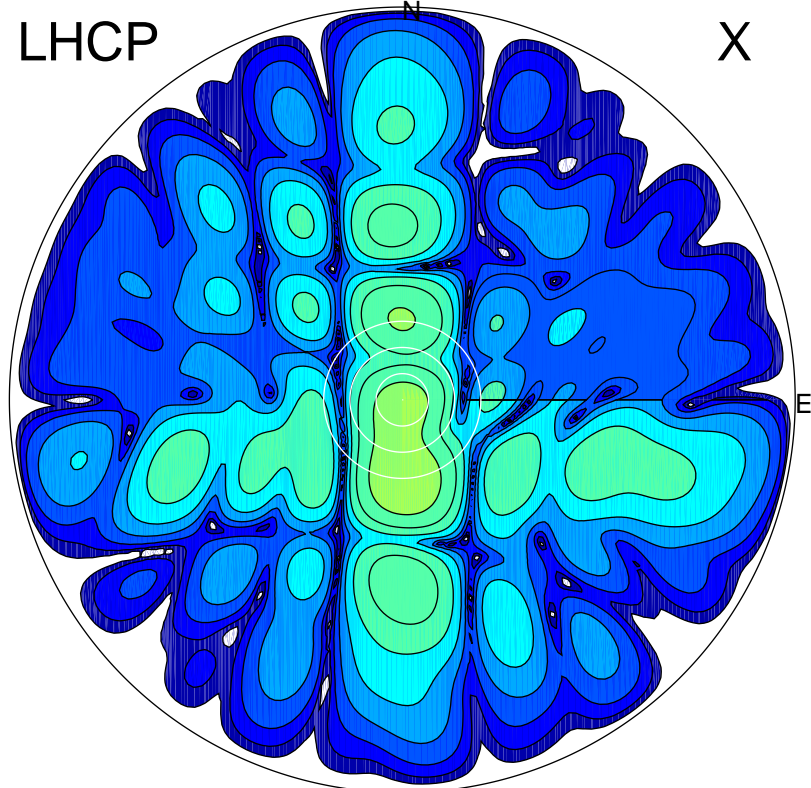


2016-10-20 14:20:57 A2 4.54400000 MHz 750.0 kW

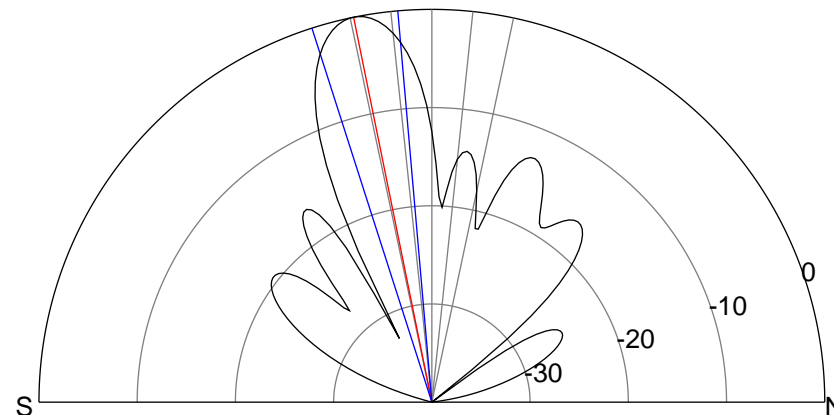
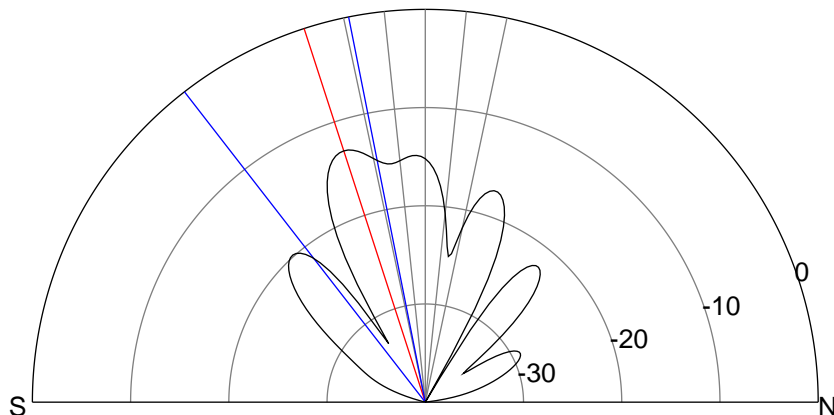
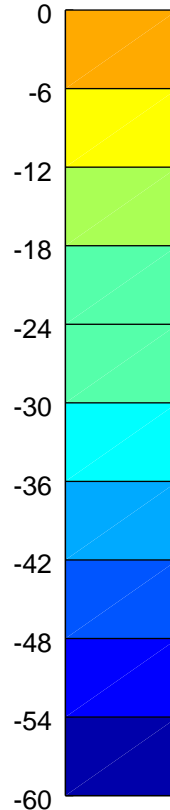
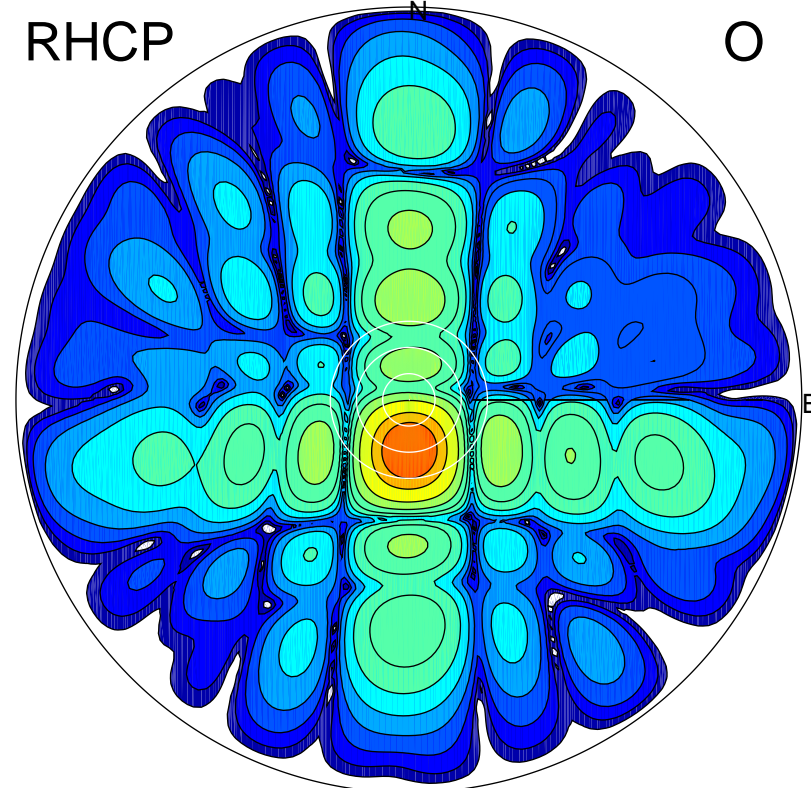
LHCP

X



RHCP

O



ERP 6.7 MW

Peak gain 9.5 dBi at Az 179 Zen 18
RHCP gain 19.6 dBi
N-S peak 9.5 dBi at Zen -18.0
N-S -3 dB beamwidth 26.5 deg.

ERP 136.7 MW

Peak gain 22.6 dBi at Az 178 Zen 11
LHCP gain 7.6 dBi
N-S peak 22.6 dBi at Zen -11.5
N-S -3 dB beamwidth 12.8 deg.