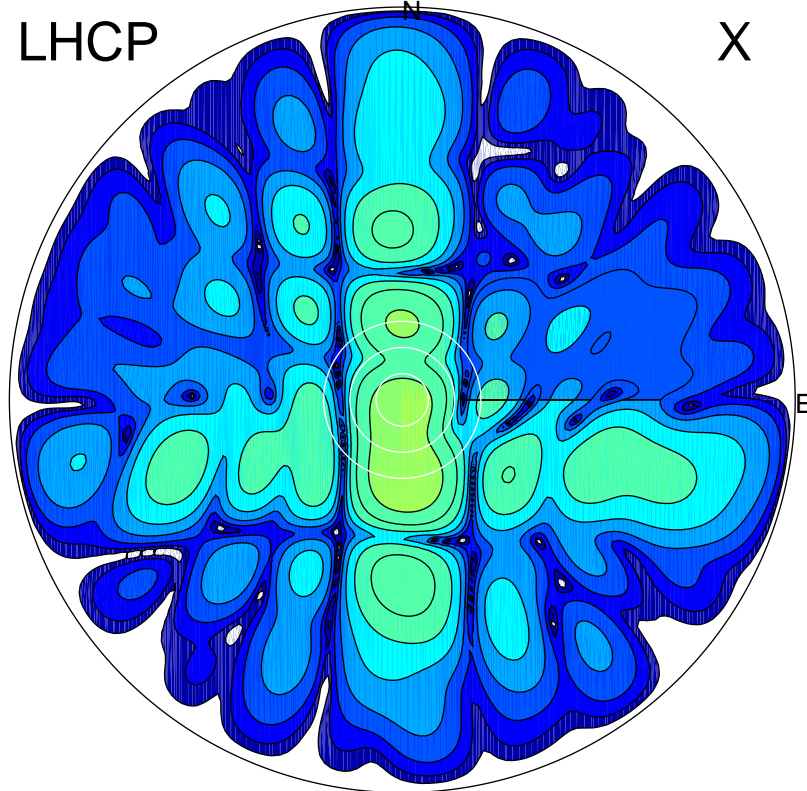


2016-10-20 14:16:57 A2 4.54400000 MHz 739.0 kW

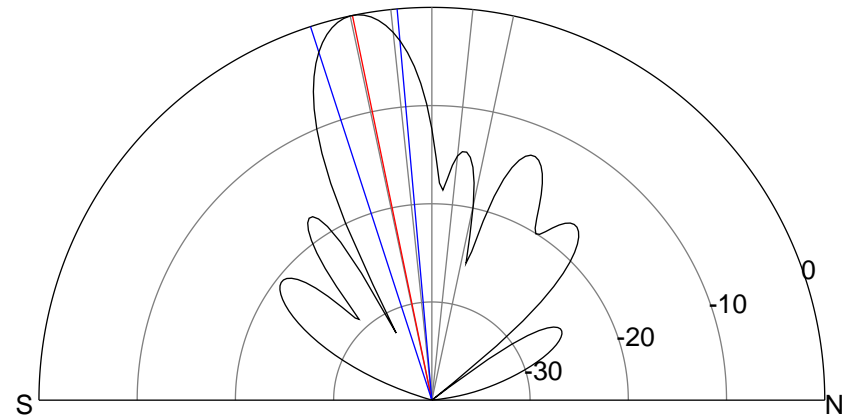
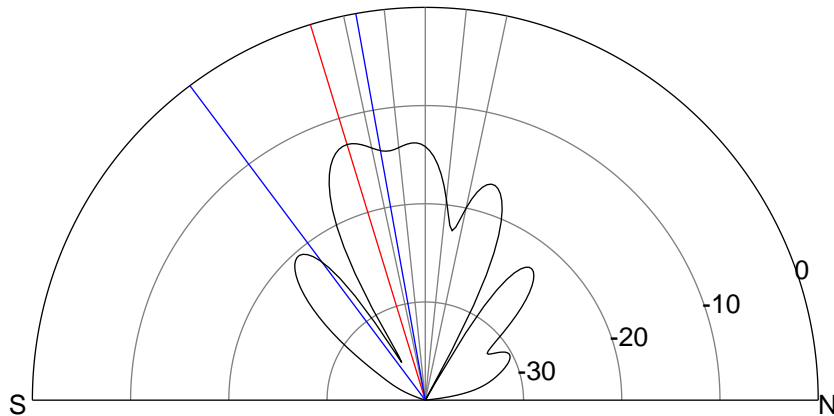
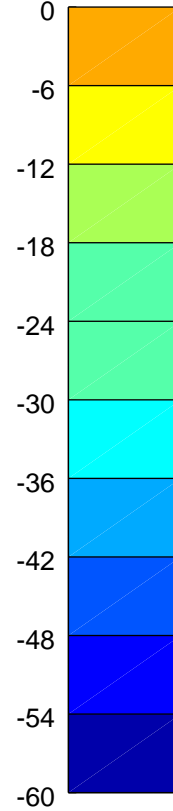
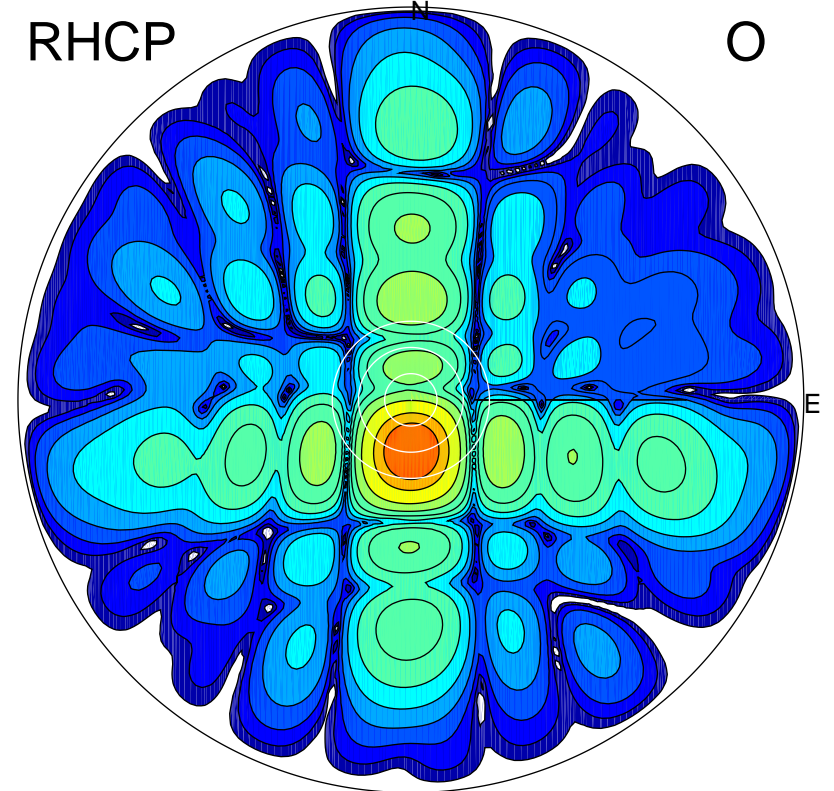
LHCP

X



RHCP

O



ERP 7.1 MW

Peak gain 9.8 dBi at Az 179 Zen 17
RHCP gain 20.6 dBi
N-S peak 9.8 dBi at Zen -17.0
N-S -3 dB beamwidth 26.6 deg.

ERP 133.6 MW

Peak gain 22.6 dBi at Az 178 Zen 12
LHCP gain 8.8 dBi
N-S peak 22.6 dBi at Zen -11.7
N-S -3 dB beamwidth 12.9 deg.