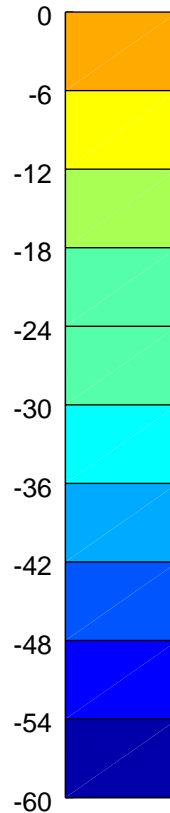
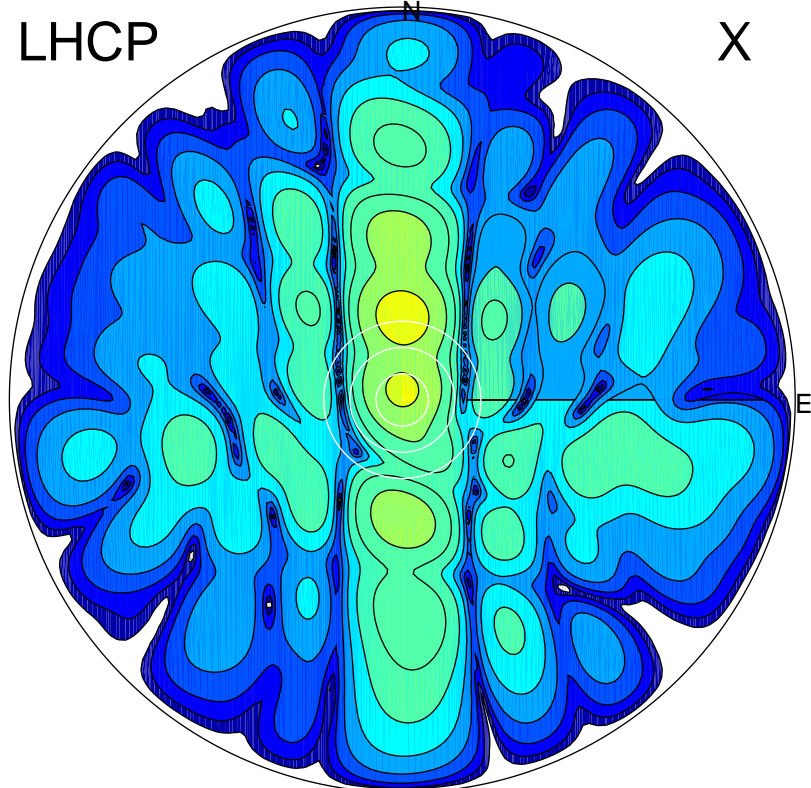


2016-10-20 14:01:27 A2 4.54400000 MHz 751.0 kW

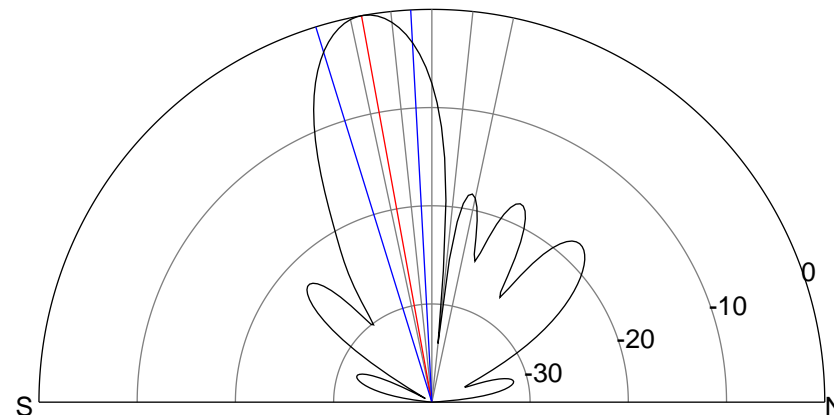
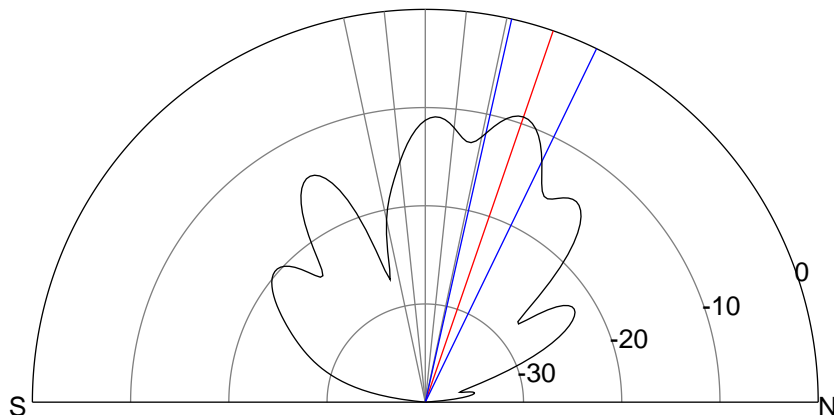
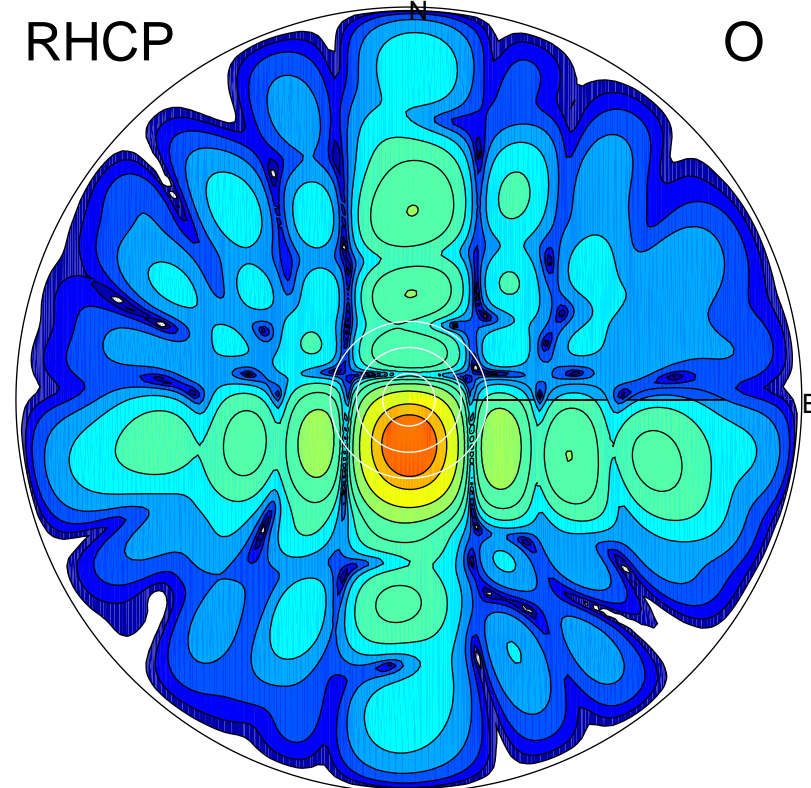
LHCP

X



RHCP

O



ERP 13.6 MW

Peak gain 12.6 dBi at Az 0 Zen 19
RHCP gain -0.5 dBi
N-S peak 12.6 dBi at Zen 19.0
N-S -3 dB beamwidth 13.1 deg.

ERP 115.4 MW

Peak gain 21.9 dBi at Az 181 Zen 10
LHCP gain 2.9 dBi
N-S peak 21.9 dBi at Zen -10.3
N-S -3 dB beamwidth 14.1 deg.