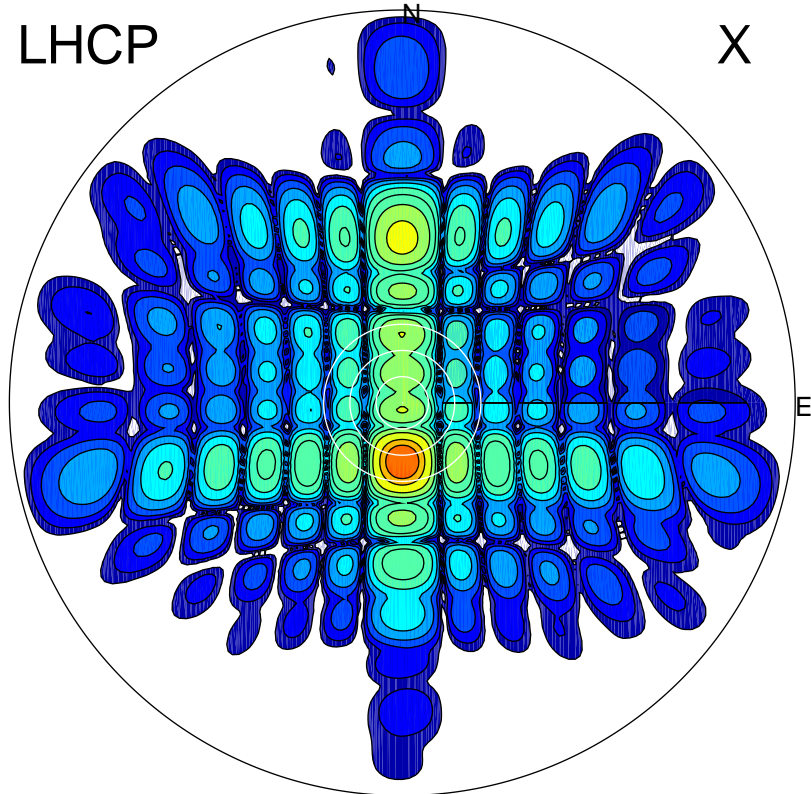


2016-10-20 13:01:05 A1 5.30000000 MHz 794.0 kW

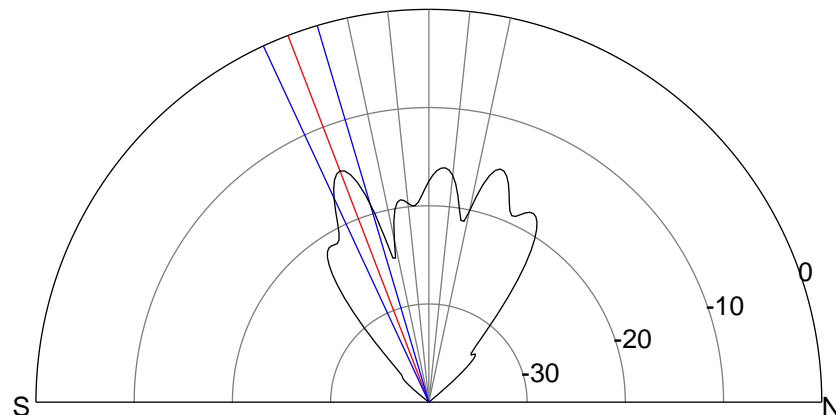
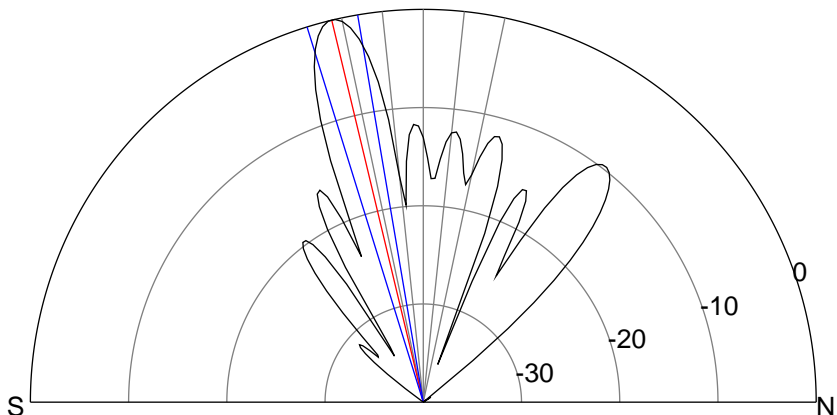
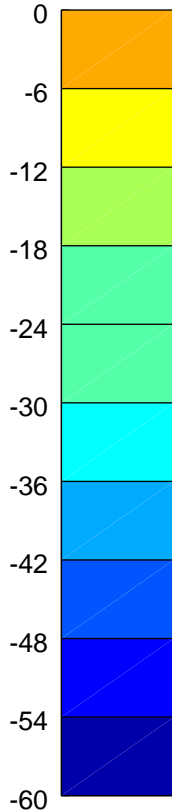
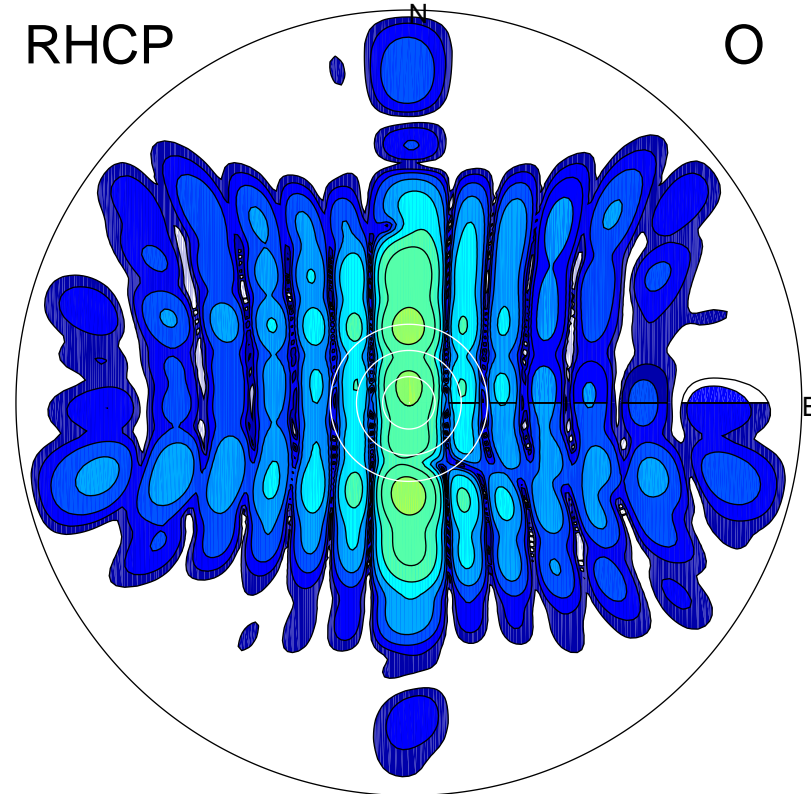
LHCP

X



RHCP

O



ERP 347.1 MW

Peak gain 26.4 dBi at Az 180 Zen 13
RHCP gain 1.5 dBi
N-S peak 26.4 dBi at Zen -13.5
N-S -3 dB beamwidth 7.6 deg.

ERP 11.5 MW

Peak gain 11.6 dBi at Az 180 Zen 21
LHCP gain 12.7 dBi
N-S peak 11.6 dBi at Zen -21.0
N-S -3 dB beamwidth 8.4 deg.