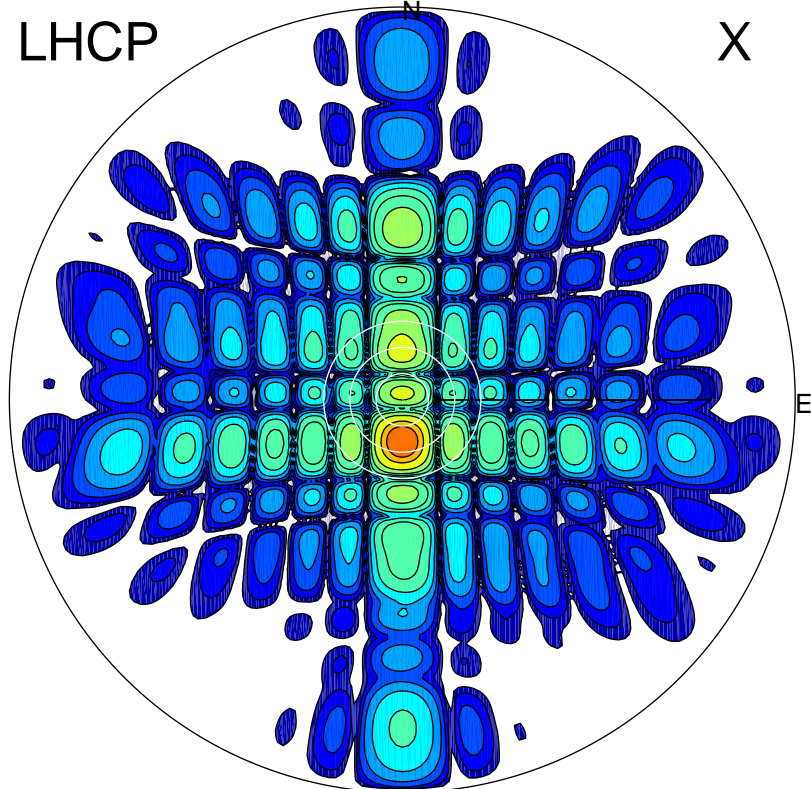


2016-10-20 12:31:05 A1 5.59500000 MHz 670.0 kW

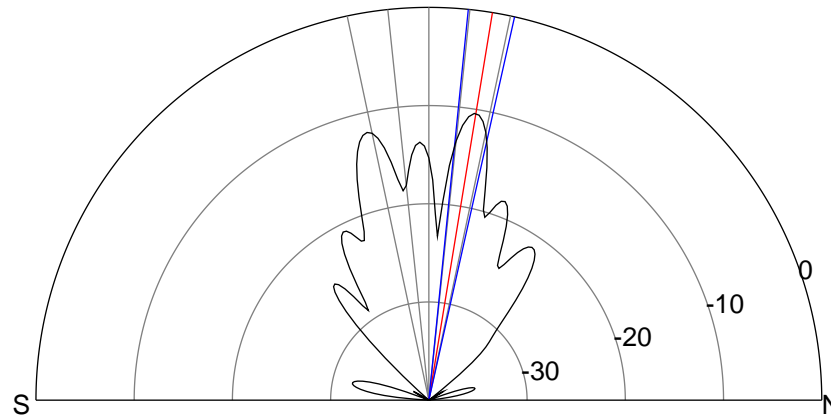
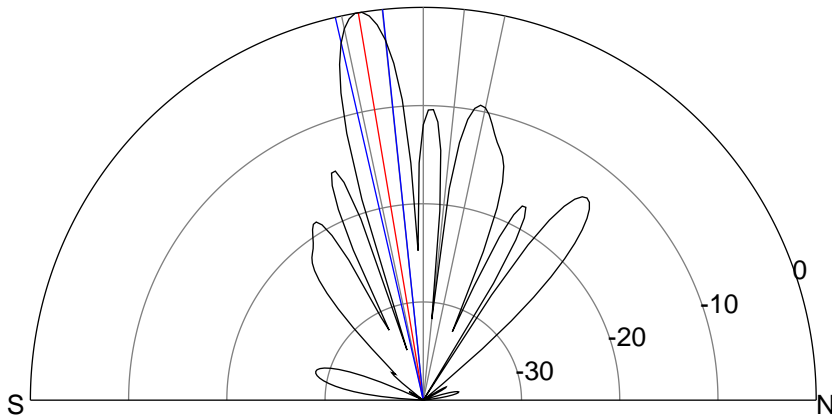
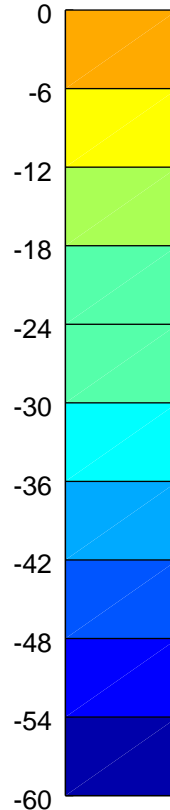
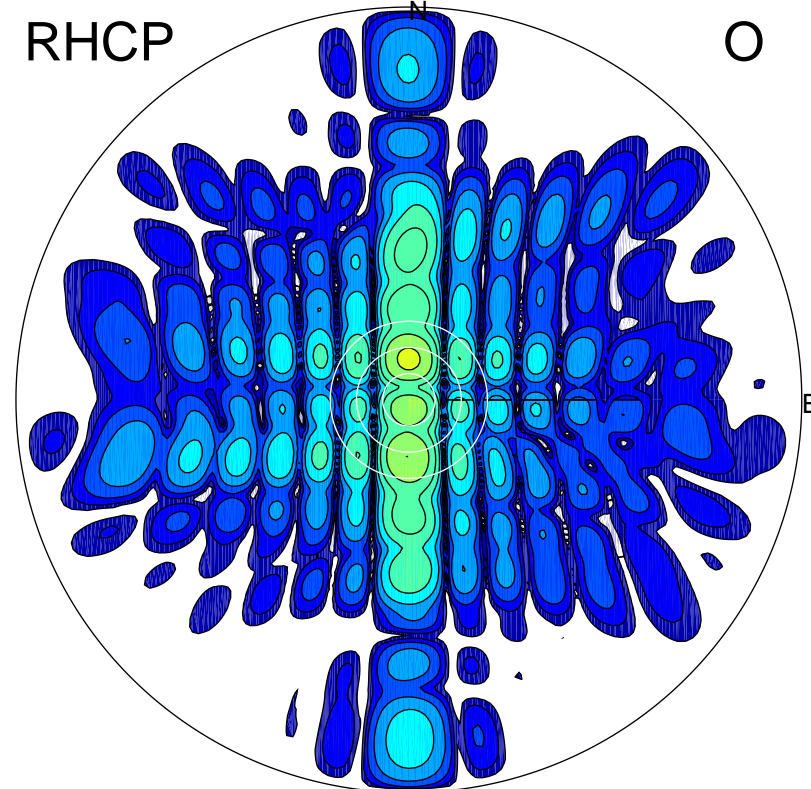
LHCP

X



RHCP

O



ERP 318.9 MW

Peak gain 26.8 dBi at Az 180 Zen 10
RHCP gain 12.9 dBi
N-S peak 26.8 dBi at Zen -9.5
N-S -3 dB beamwidth 7.0 deg.

ERP 28.8 MW

Peak gain 16.3 dBi at Az 0 Zen 9
LHCP gain 15.7 dBi
N-S peak 16.4 dBi at Zen 9.3
N-S -3 dB beamwidth 6.8 deg.