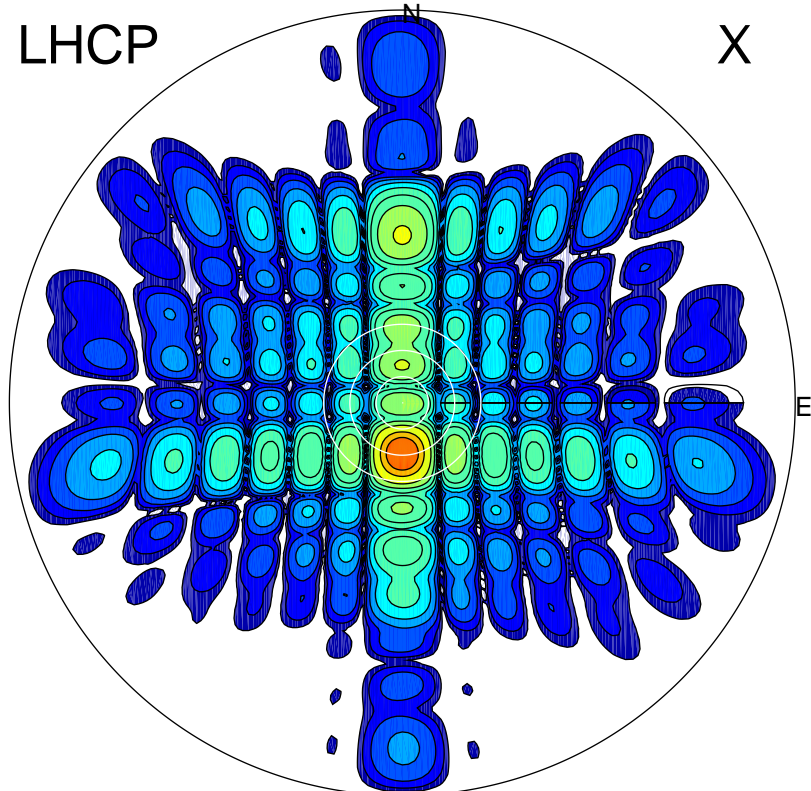


2016-10-20 12:16:57 A1 5.42300000 MHz 753.0 kW

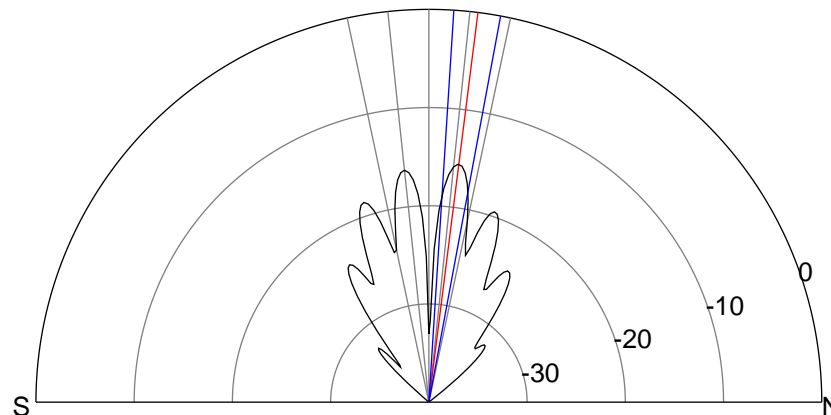
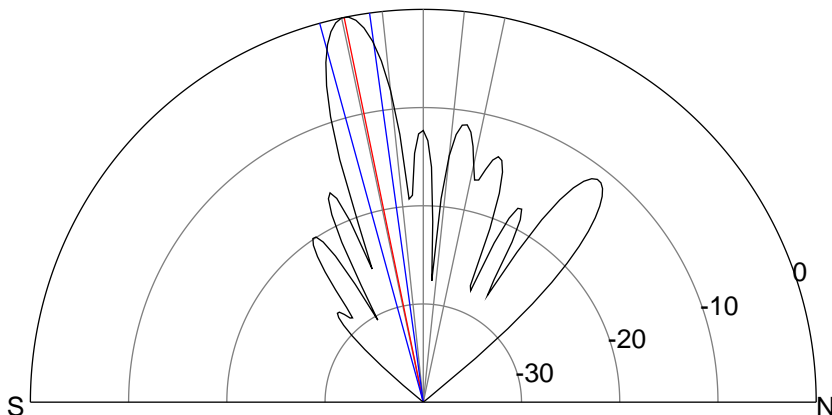
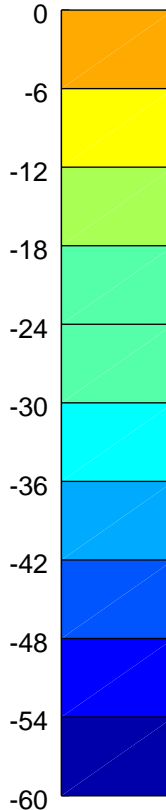
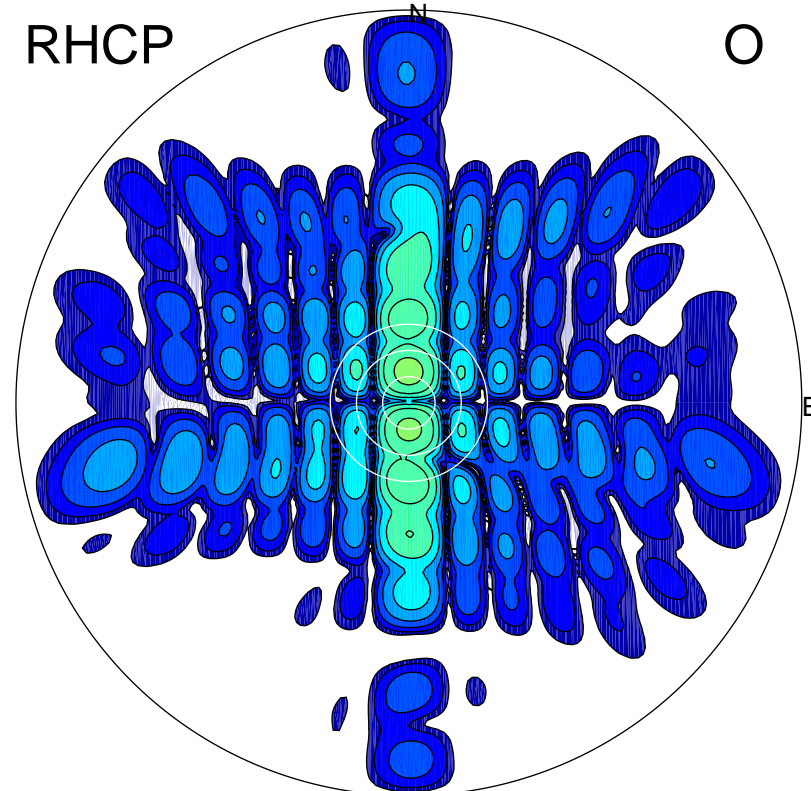
LHCP

X



RHCP

O



### ERP 377.6 MW

Peak gain 27.0 dBi at Az 180 Zen 12  
RHCP gain 2.8 dBi  
N-S peak 27.0 dBi at Zen -11.6  
N-S -3 dB beamwidth 7.4 deg.

### ERP 10.4 MW

Peak gain 11.4 dBi at Az 359 Zen 7  
LHCP gain 14.5 dBi  
N-S peak 11.4 dBi at Zen 7.2  
N-S -3 dB beamwidth 6.9 deg.