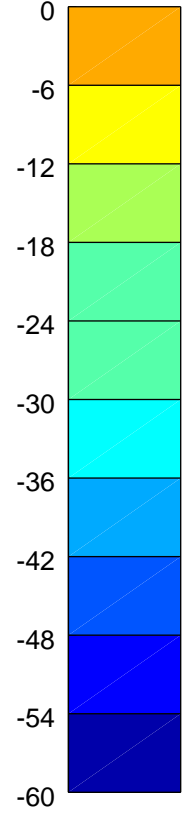
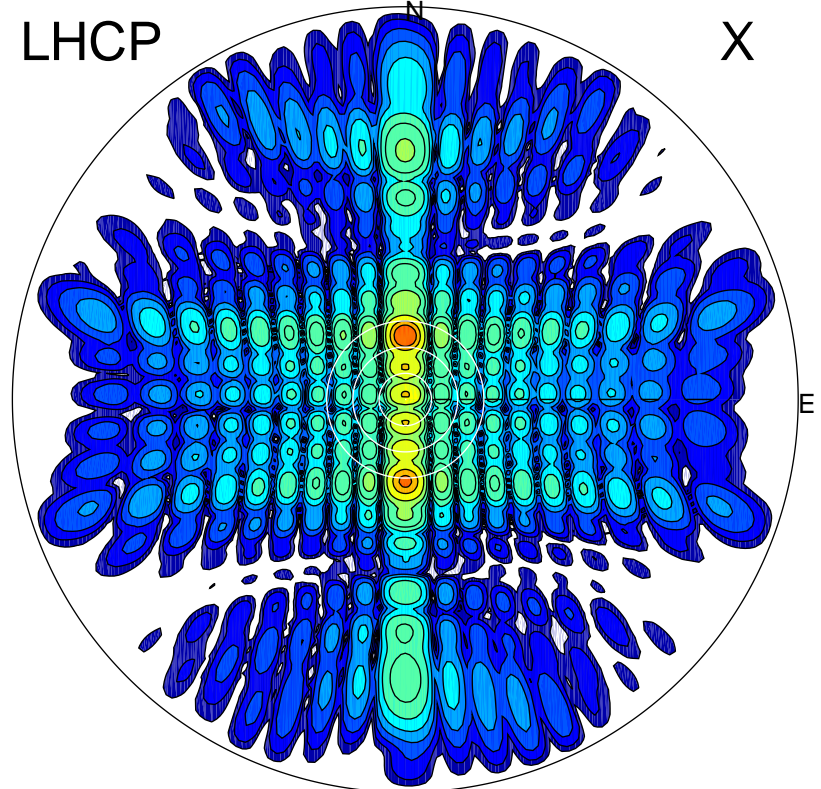


2016-04-22 10:25:26 A1 7.95300000 MHz 677.0 kW

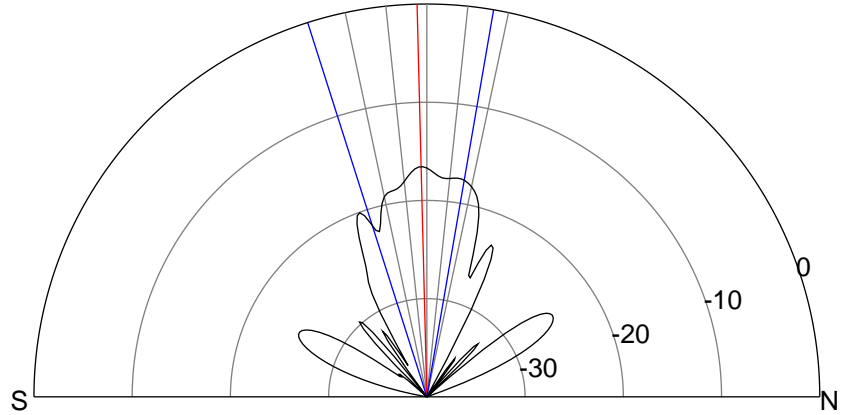
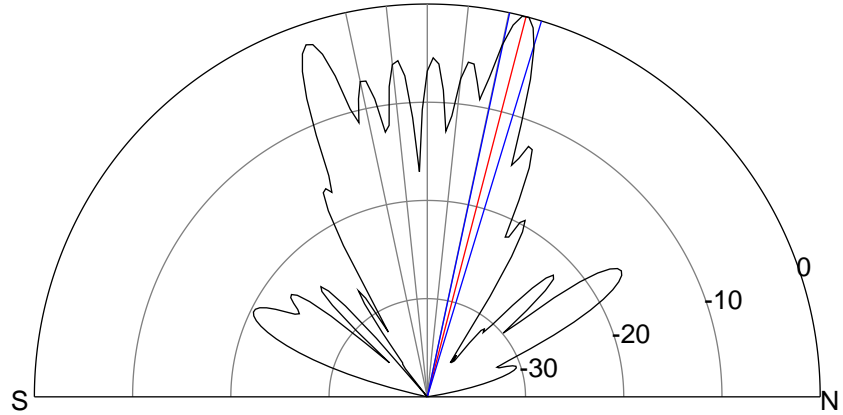
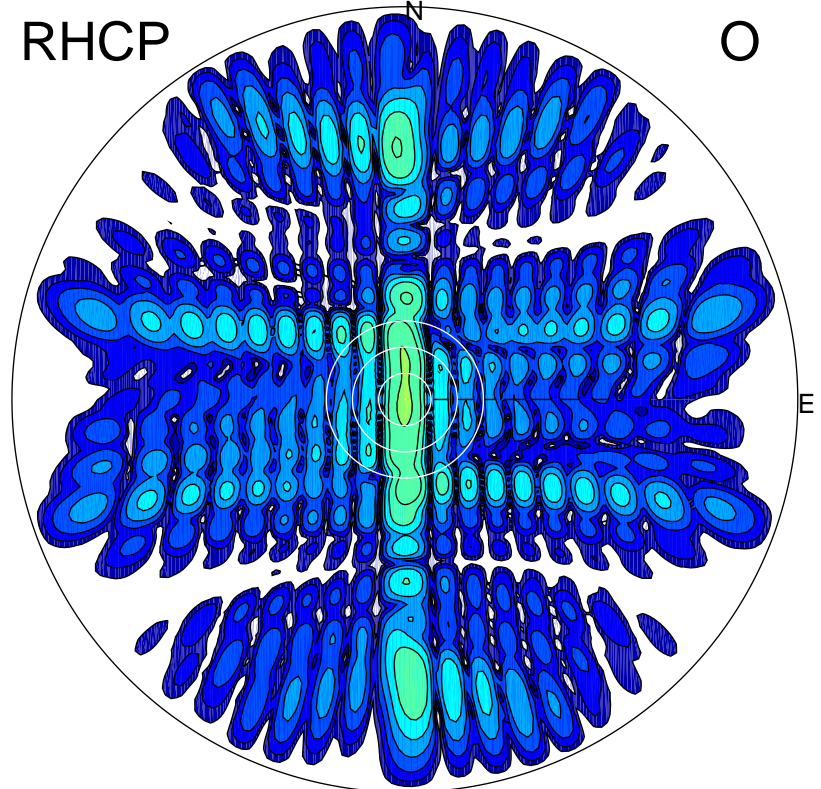
LHCP

X



RHCP

O



ERP 362.9 MW

Peak gain 27.3 dBi at Az 0 Zen 15
RHCP gain 7.6 dBi
N-S peak 27.4 dBi at Zen 14.6
N-S -3 dB beamwidth 4.8 deg.

ERP 8.0 MW

Peak gain 10.7 dBi at Az 184 Zen 1
LHCP gain 16.5 dBi
N-S peak 10.7 dBi at Zen -1.4
N-S -3 dB beamwidth 27.4 deg.