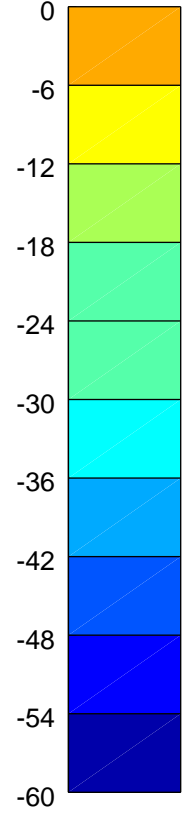
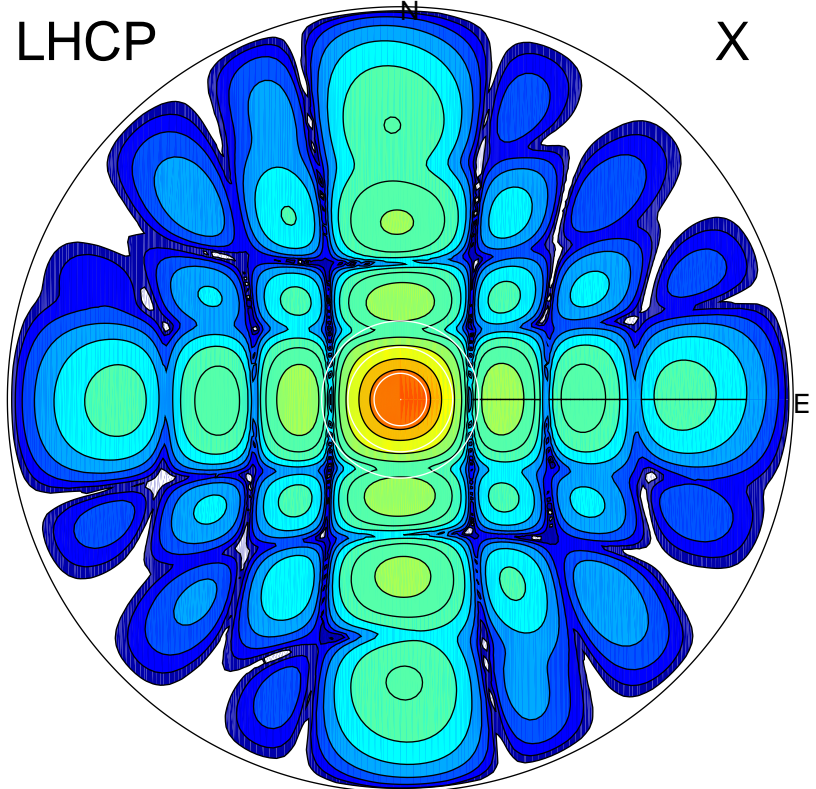


2016-04-06 08:37:35 A2 4.04000000 MHz 831.0 kW

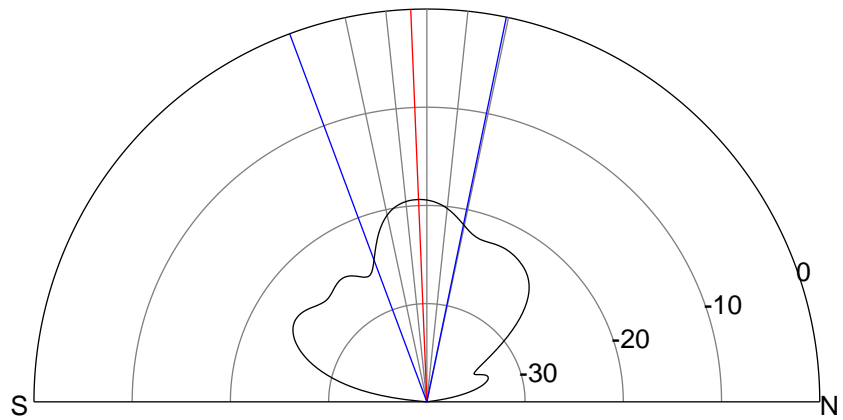
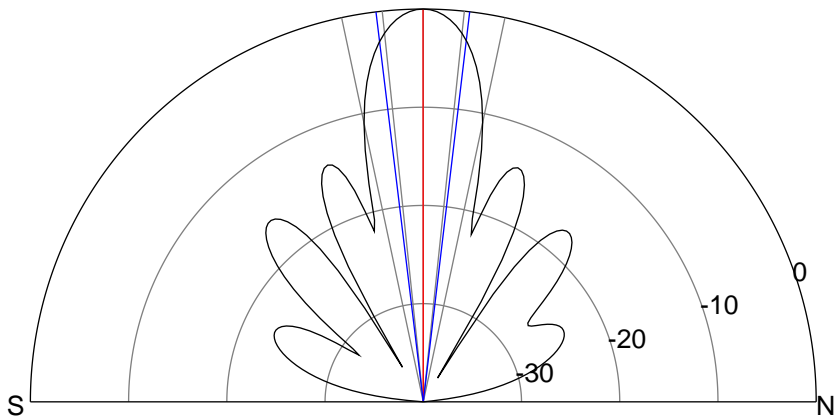
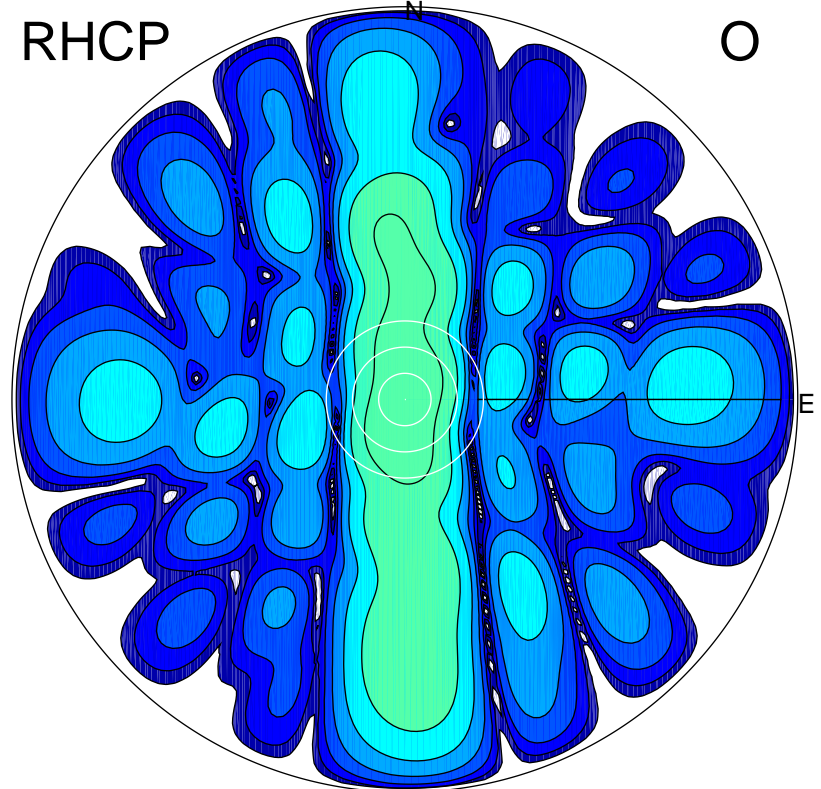
LHCP

X



RHCP

O



ERP 140.7 MW

Peak gain 22.3 dBi at Az 81 Zen 0
RHCP gain 2.8 dBi
N-S peak 22.3 dBi at Zen -0.0
N-S -3 dB beamwidth 13.7 deg.

ERP 1.6 MW

Peak gain 3.0 dBi at Az 198 Zen 4
LHCP gain 21.3 dBi
N-S peak 2.9 dBi at Zen -2.4
N-S -3 dB beamwidth 32.1 deg.