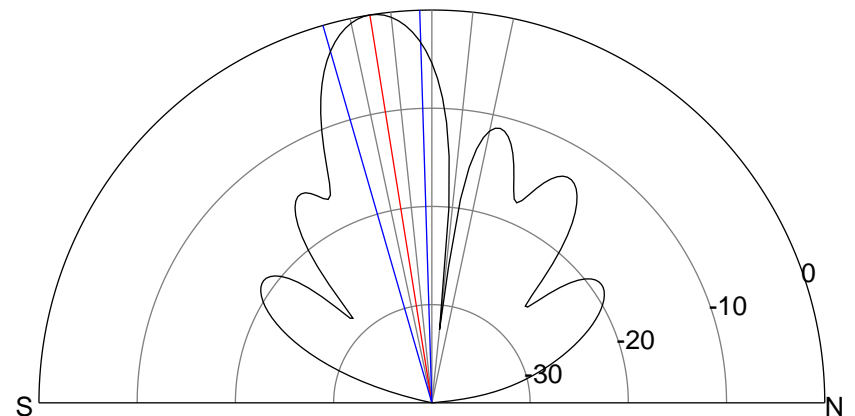
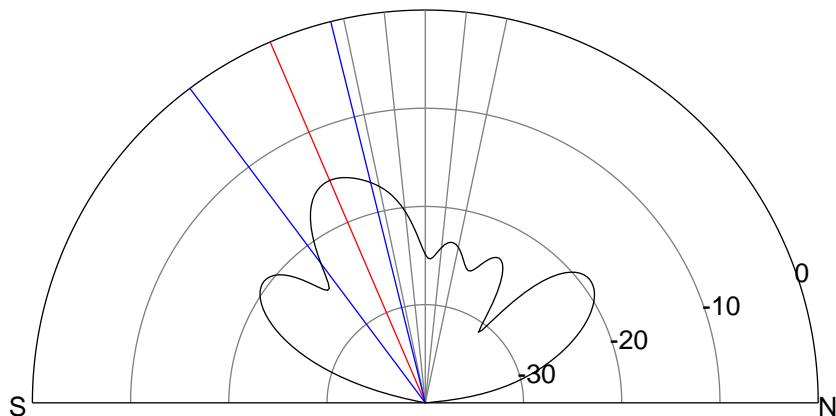
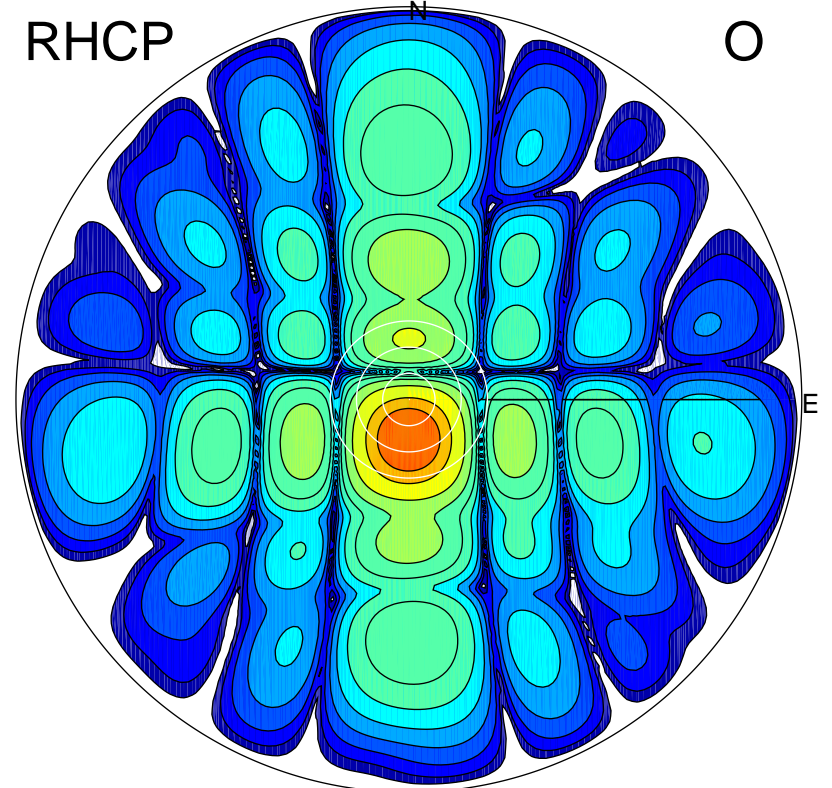
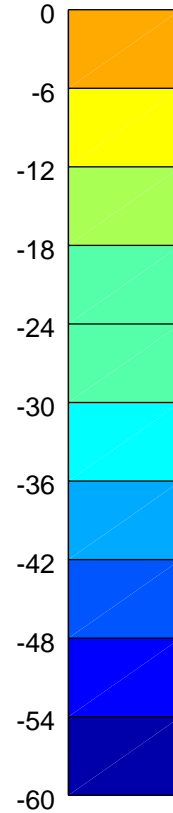
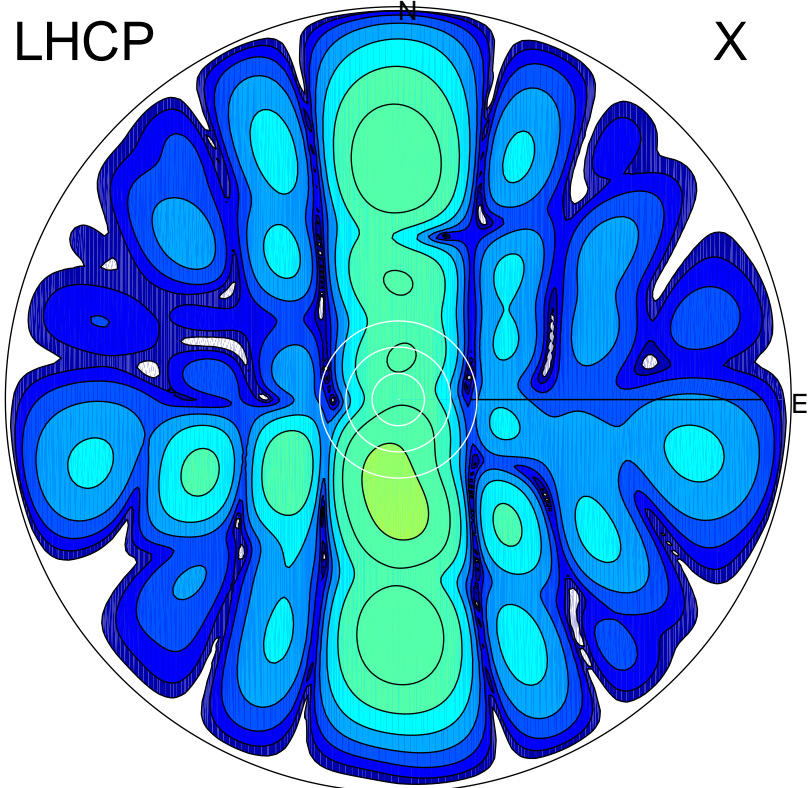


2016-03-11 16:06:35 A2 3.92000000 MHz 785.0 kW



ERP 3.4 MW

Peak gain 6.3 dBi at Az 181 Zen 23
RHCP gain 9.8 dBi
N-S peak 6.3 dBi at Zen -23.2
N-S -3 dB beamwidth 22.9 deg.

ERP 114.5 MW

Peak gain 21.6 dBi at Az 179 Zen 9
LHCP gain 2.9 dBi
N-S peak 21.6 dBi at Zen -9.1
N-S -3 dB beamwidth 14.3 deg.