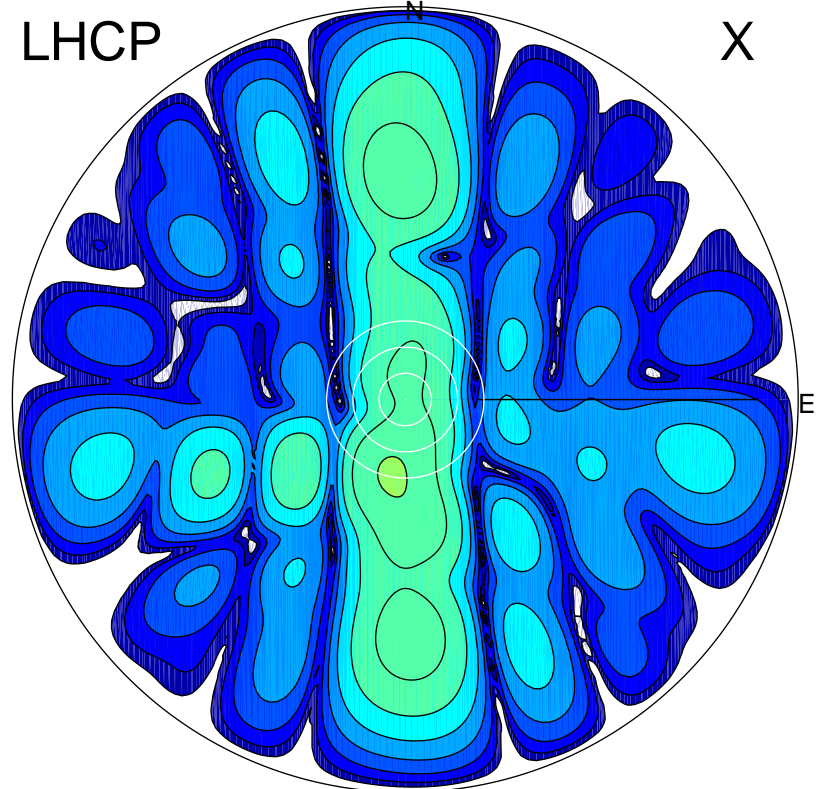


2016-03-11 16:00:35 A2 3.98000000 MHz 778.0 kW

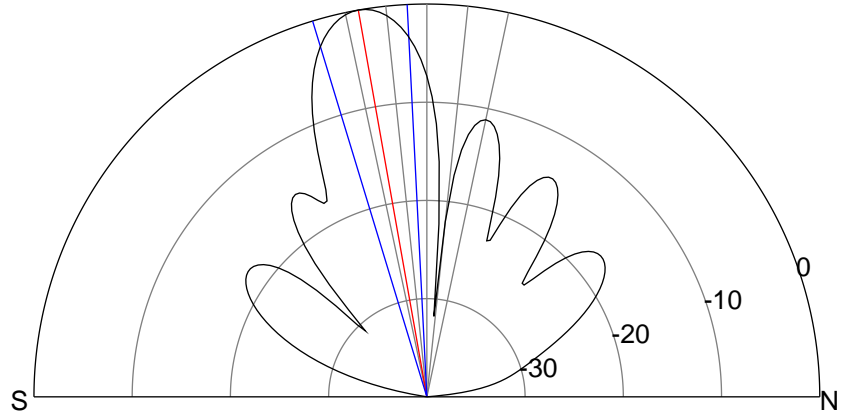
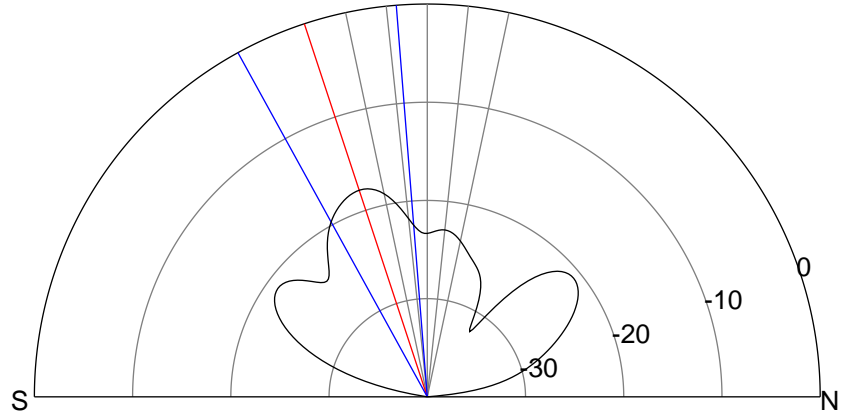
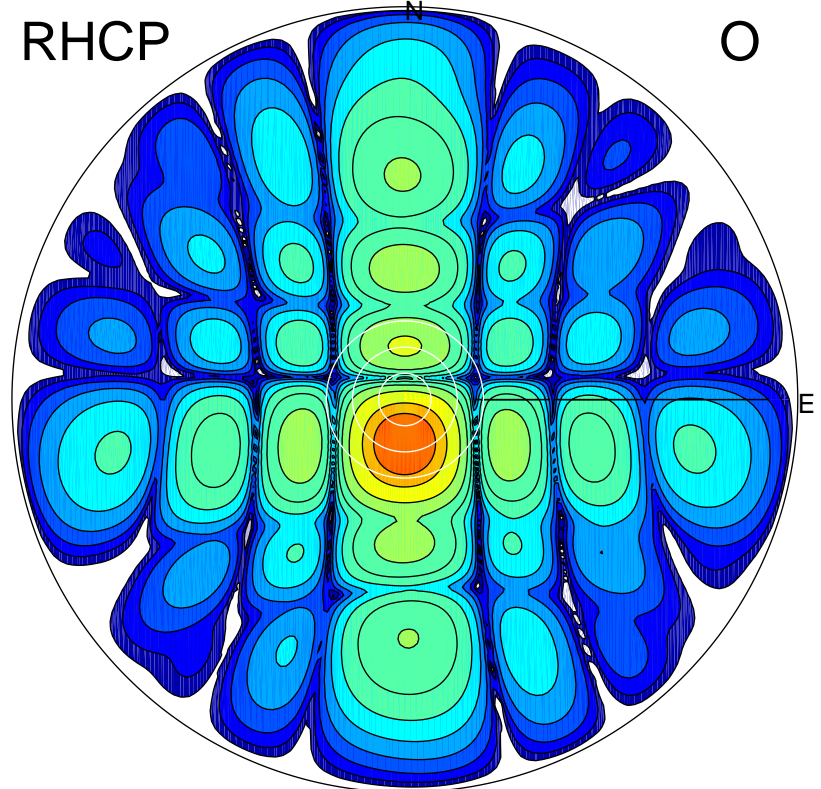
LHCP

X



RHCP

O



ERP 2.3 MW

Peak gain 4.6 dBi at Az 190 Zen 18
RHCP gain 18.0 dBi
N-S peak 4.1 dBi at Zen -18.2
N-S -3 dB beamwidth 24.3 deg.

ERP 120.8 MW

Peak gain 21.9 dBi at Az 178 Zen 10
LHCP gain 2.2 dBi
N-S peak 21.9 dBi at Zen -10.1
N-S -3 dB beamwidth 14.0 deg.