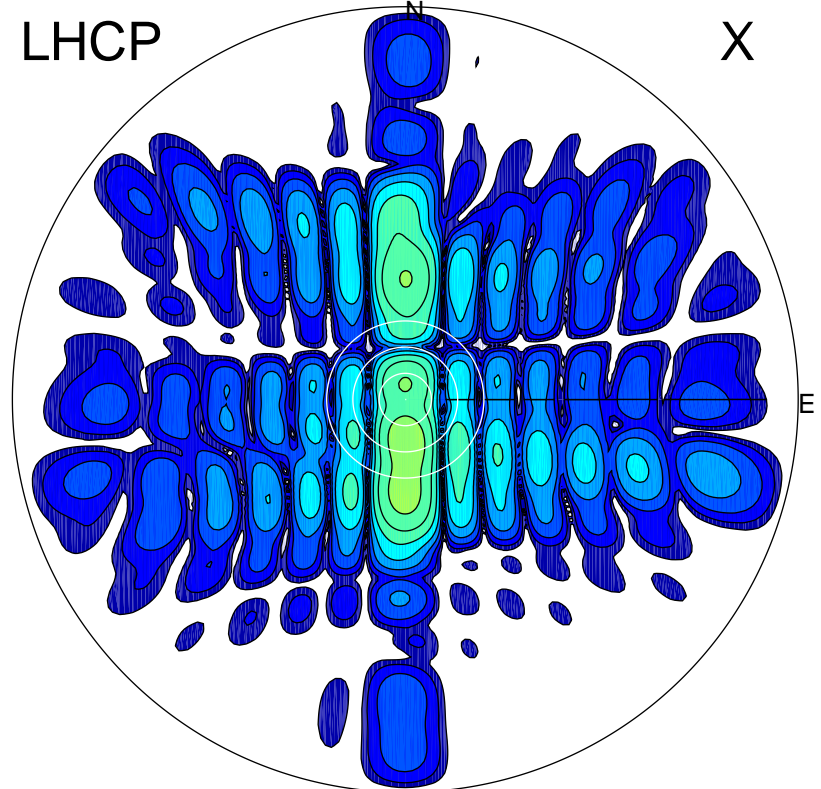


2016-03-11 10:06:35 A1 5.36000000 MHz 797.0 kW

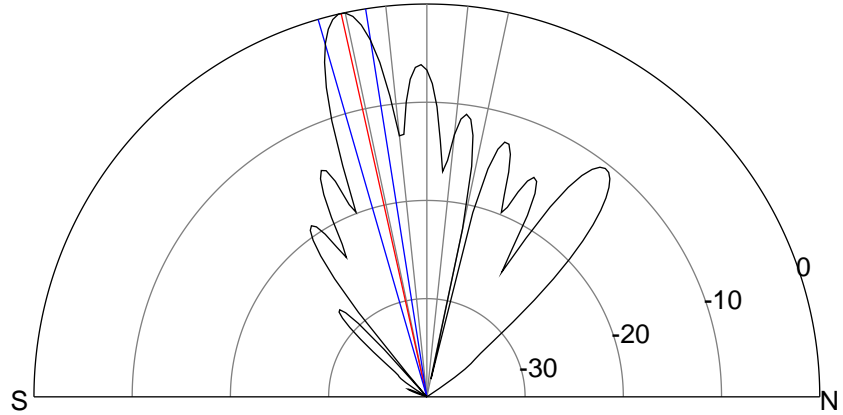
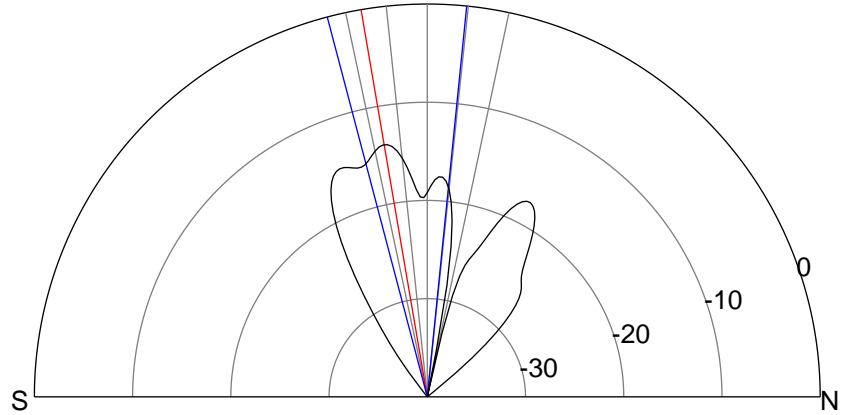
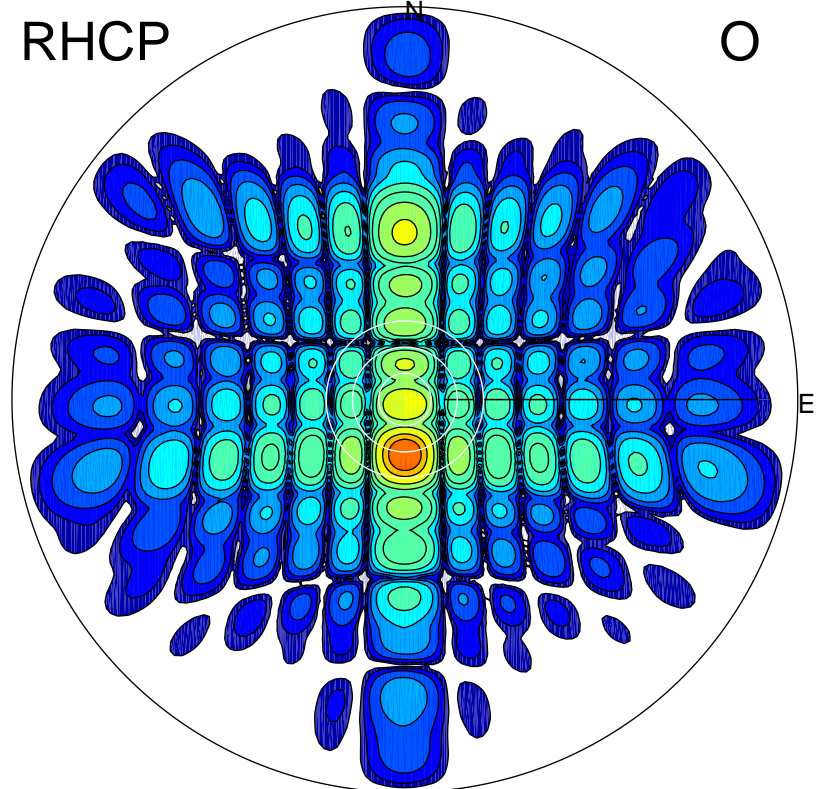
LHCP

X



RHCP

O



ERP 13.8 MW

Peak gain 12.4 dBi at Az 177 Zen 10
RHCP gain 24.7 dBi
N-S peak 12.4 dBi at Zen -9.7
N-S -3 dB beamwidth 20.5 deg.

ERP 342.0 MW

Peak gain 26.3 dBi at Az 180 Zen 13
LHCP gain 11.5 dBi
N-S peak 26.4 dBi at Zen -12.6
N-S -3 dB beamwidth 7.1 deg.