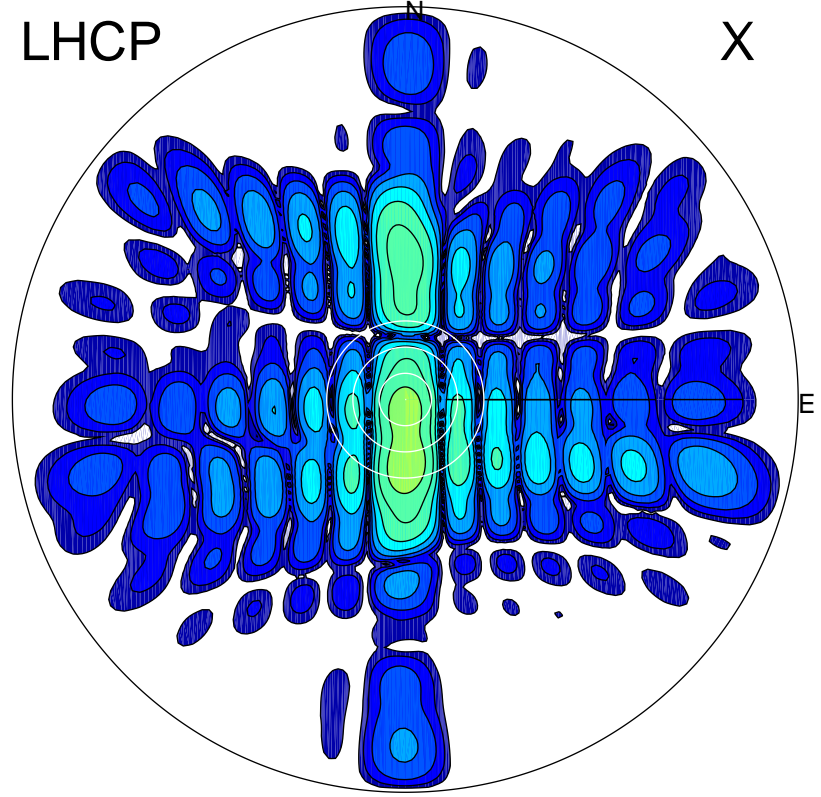


2016-03-11 10:00:35 A1 5.42000000 MHz 789.0 kW

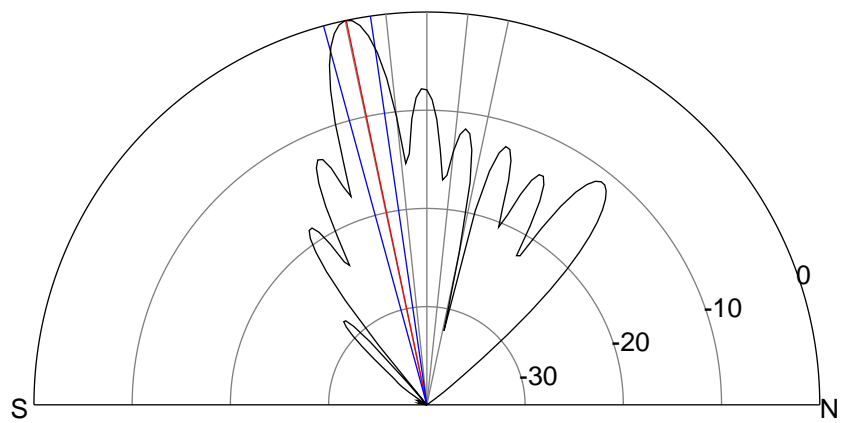
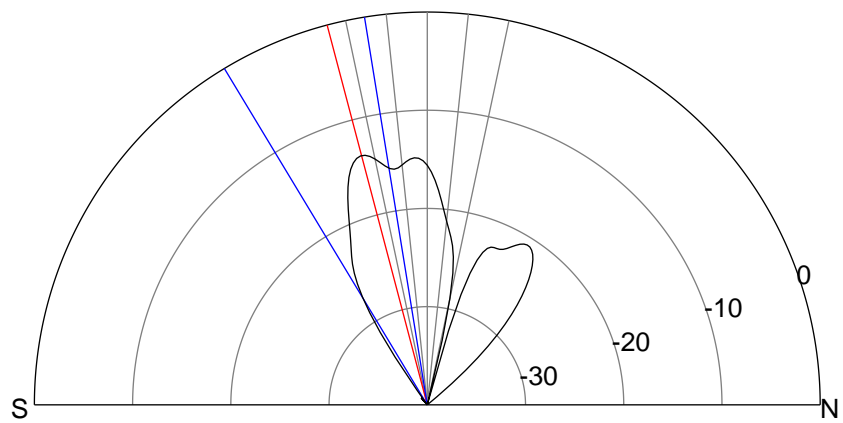
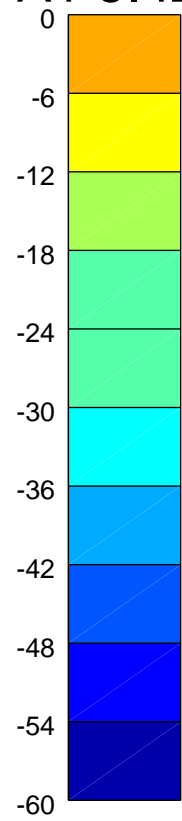
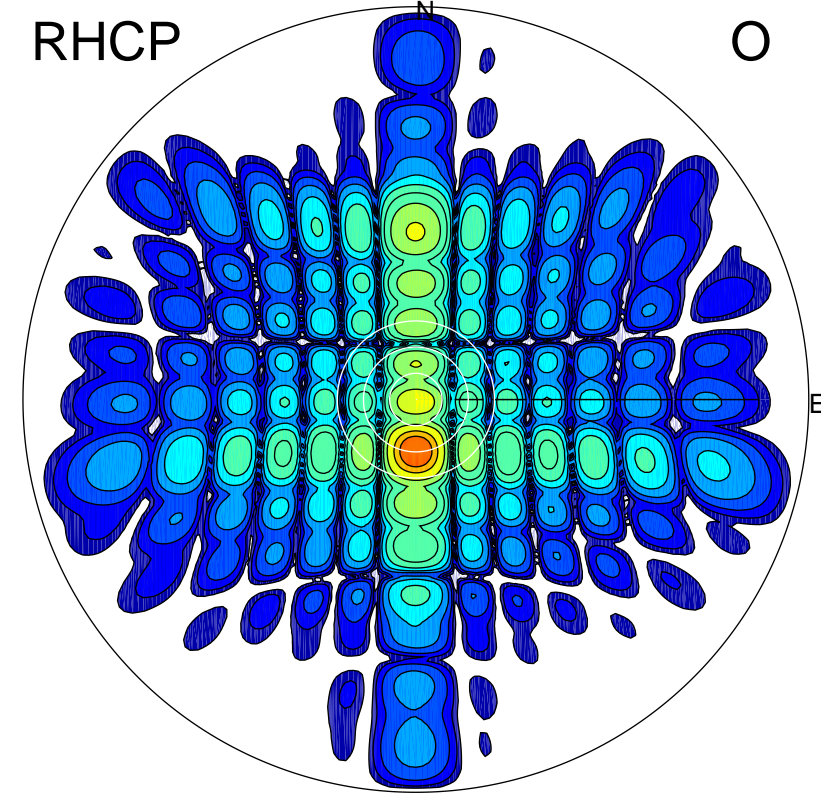
LHCP

X



RHCP

O



ERP 15.3 MW

Peak gain 12.9 dBi at Az 179 Zen 15
RHCP gain 24.4 dBi
N-S peak 12.9 dBi at Zen -14.8
N-S -3 dB beamwidth 21.9 deg.

ERP 362.7 MW

Peak gain 26.6 dBi at Az 180 Zen 12
LHCP gain 12.2 dBi
N-S peak 26.6 dBi at Zen -11.8
N-S -3 dB beamwidth 7.0 deg.