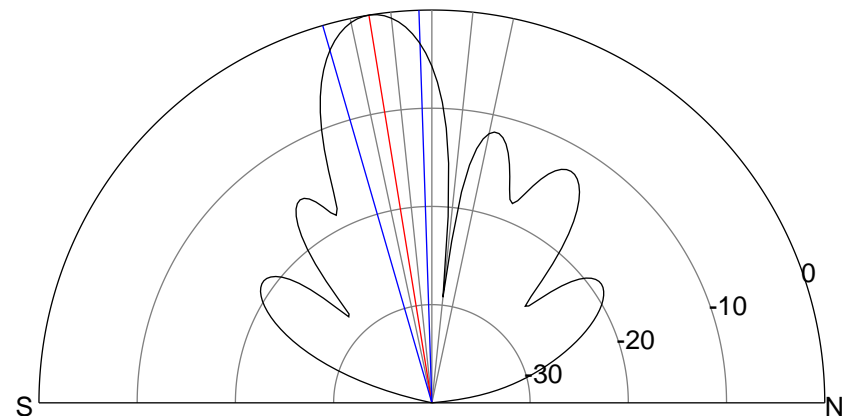
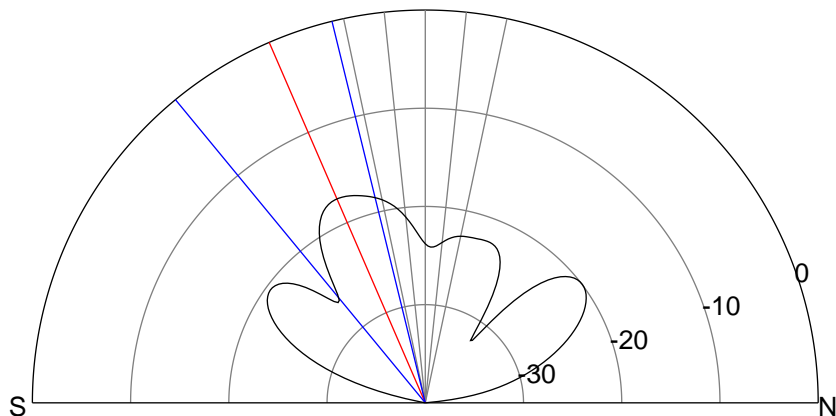
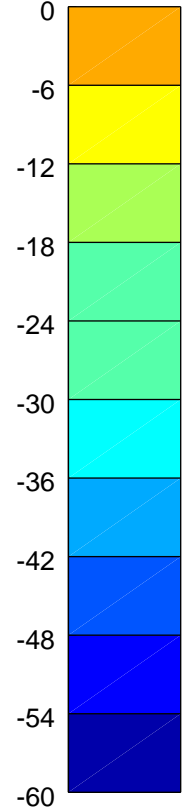
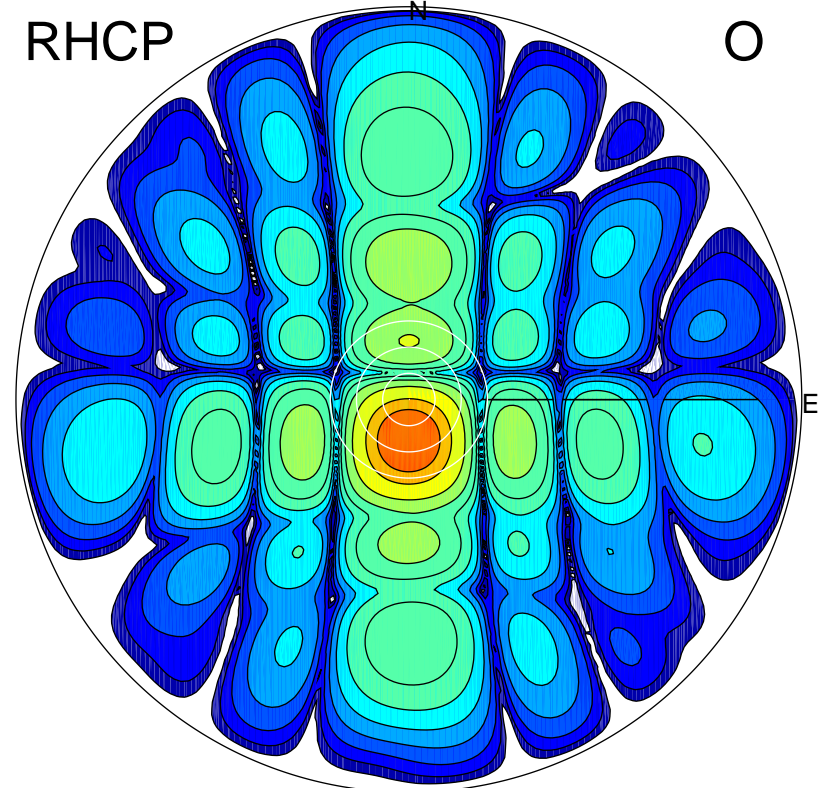
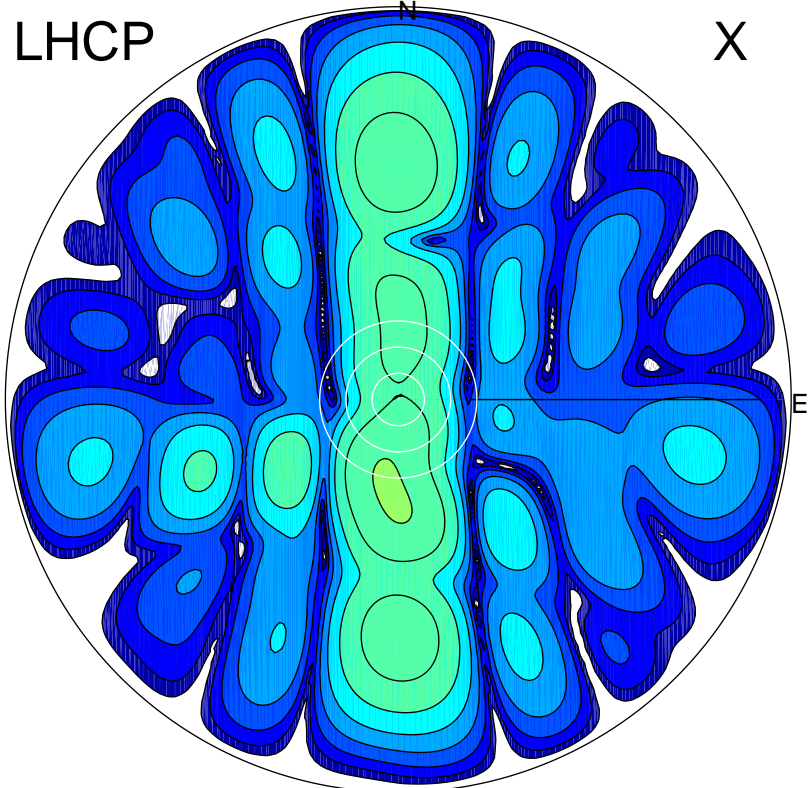


2016-03-10 16:06:35 A2 3.92000000 MHz 802.0 kW



ERP 2.2 MW

Peak gain 4.4 dBi at Az 183 Zen 22
RHCP gain 11.7 dBi
N-S peak 4.4 dBi at Zen -23.4
N-S -3 dB beamwidth 25.7 deg.

ERP 119.5 MW

Peak gain 21.7 dBi at Az 180 Zen 9
LHCP gain 2.0 dBi
N-S peak 21.7 dBi at Zen -9.2
N-S -3 dB beamwidth 14.2 deg.