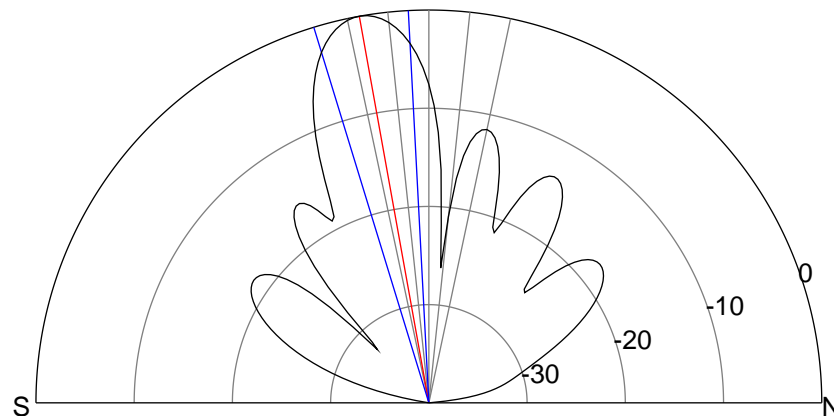
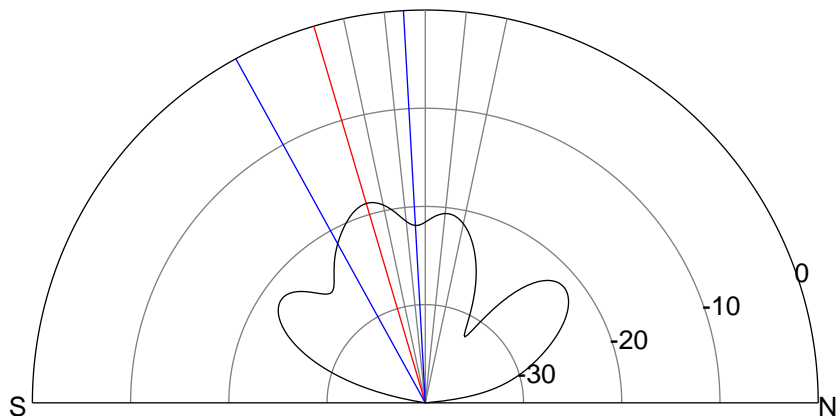
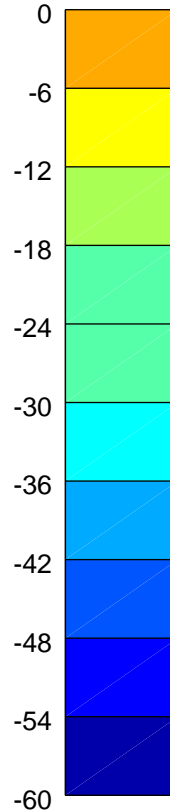
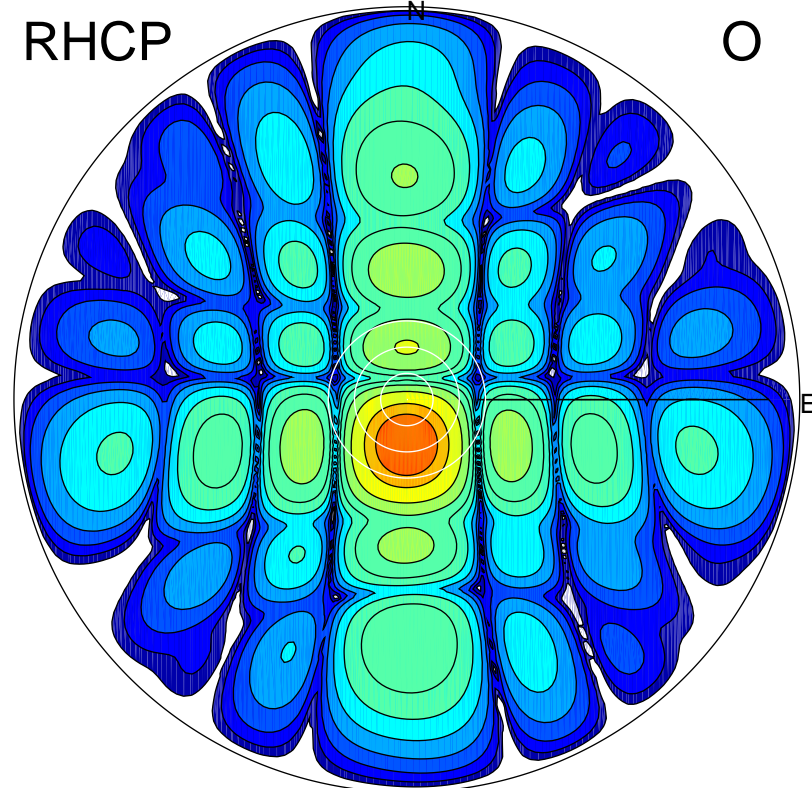
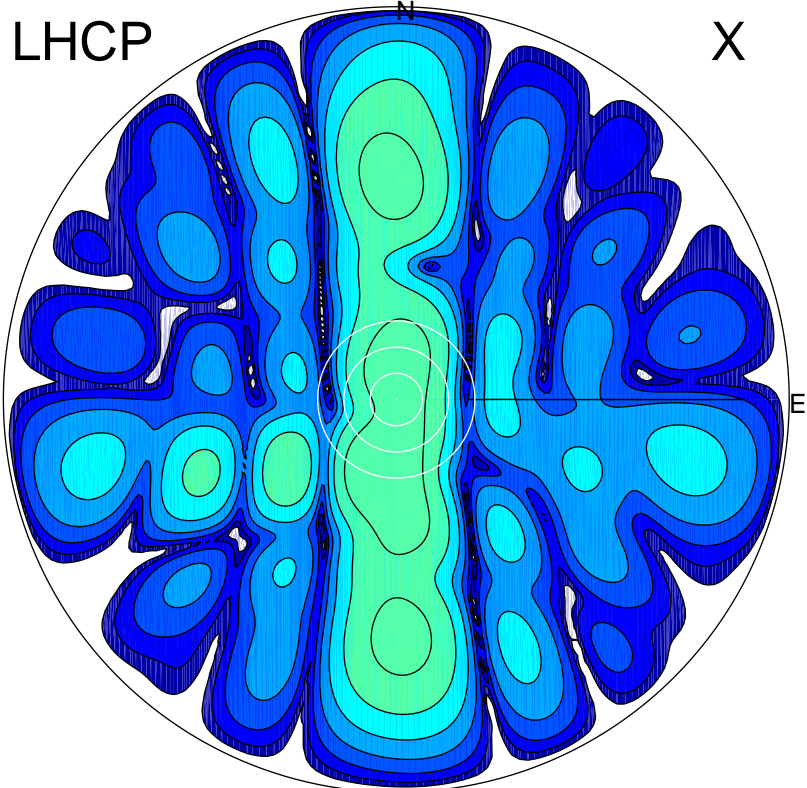


2016-03-10 16:00:35 A2 3.98000000 MHz 808.0 kW



### ERP 2.0 MW

Peak gain 3.9 dBi at Az 192 Zen 17  
RHCP gain 18.9 dBi  
N-S peak 3.1 dBi at Zen -16.5  
N-S -3 dB beamwidth 25.6 deg.

### ERP 126.5 MW

Peak gain 21.9 dBi at Az 179 Zen 10  
LHCP gain 1.9 dBi  
N-S peak 21.9 dBi at Zen -10.2  
N-S -3 dB beamwidth 14.0 deg.