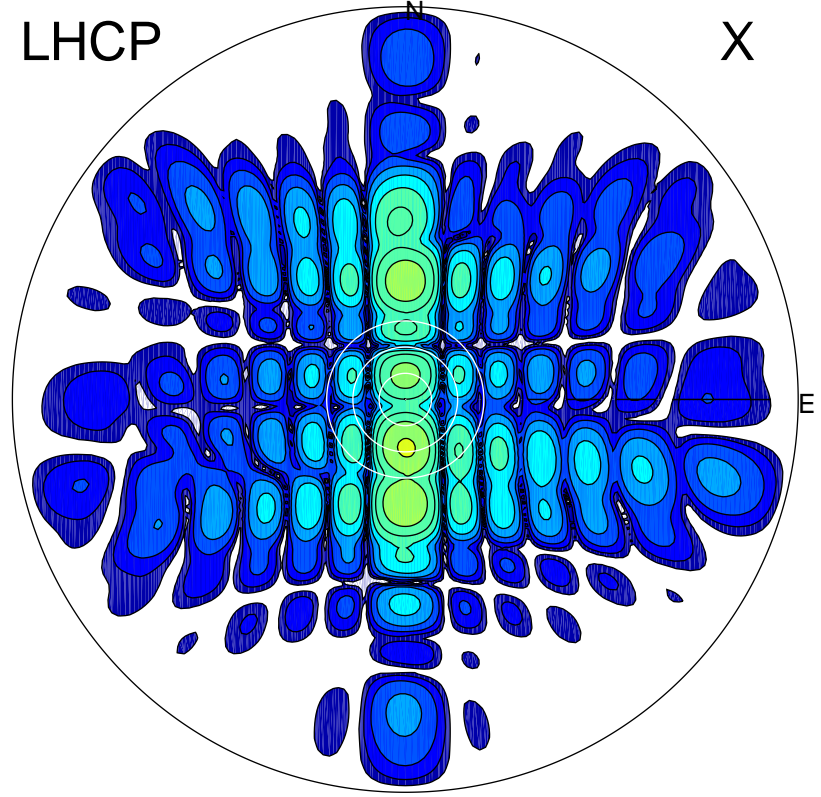


2016-03-10 10:06:35 A1 5.30000000 MHz 842.0 kW

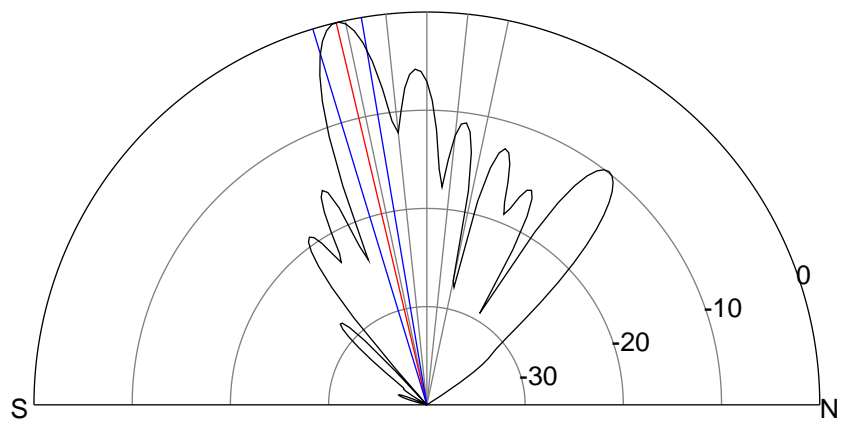
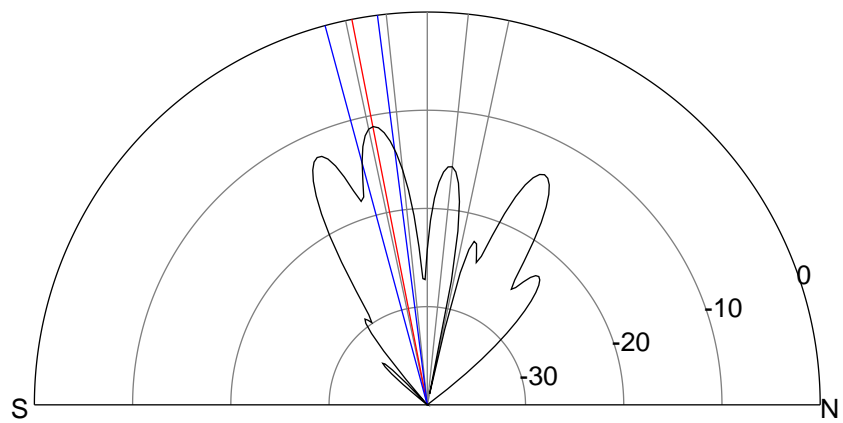
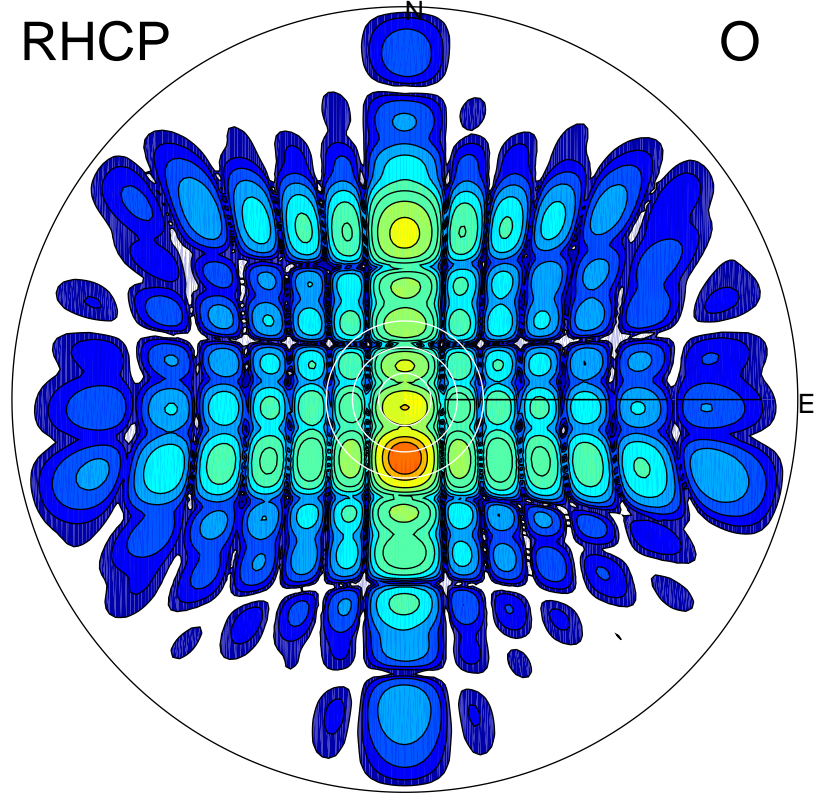
LHCP

X



RHCP

O



ERP 25.4 MW

Peak gain 14.8 dBi at Az 179 Zen 11
RHCP gain 24.7 dBi
N-S peak 14.8 dBi at Zen -11.1
N-S -3 dB beamwidth 7.8 deg.

ERP 329.5 MW

Peak gain 25.9 dBi at Az 180 Zen 13
LHCP gain 14.0 dBi
N-S peak 25.9 dBi at Zen -13.3
N-S -3 dB beamwidth 7.3 deg.