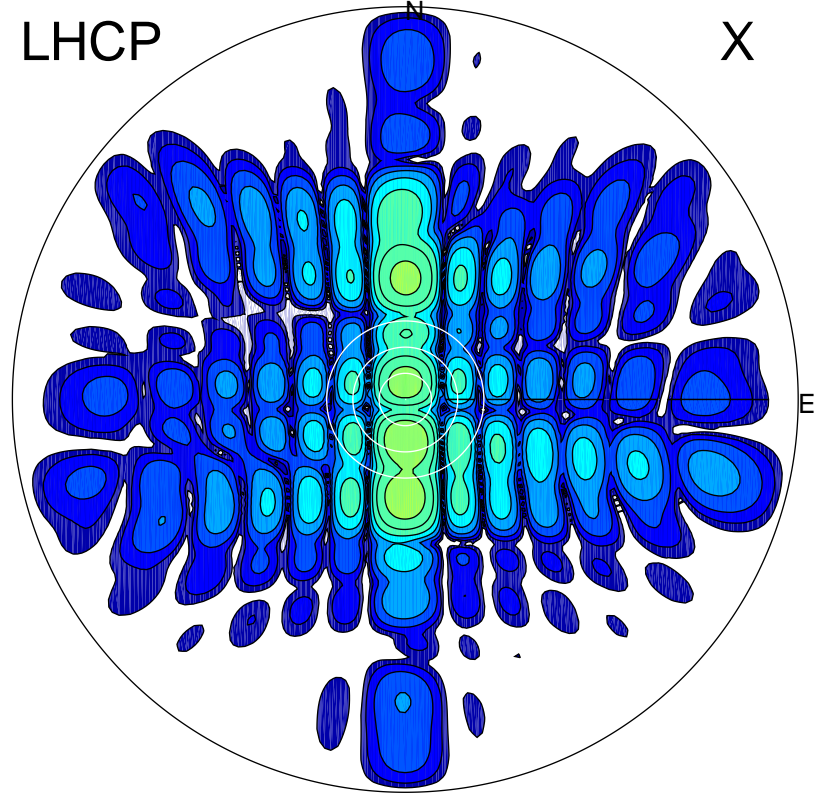


2016-03-10 10:00:35 A1 5.35000000 MHz 805.0 kW

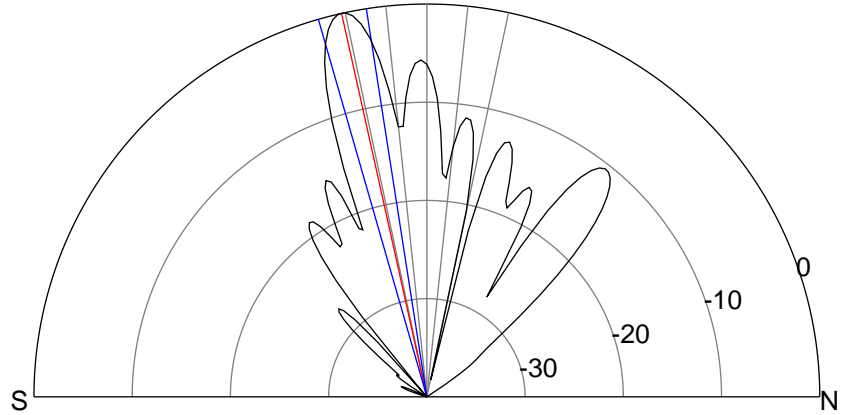
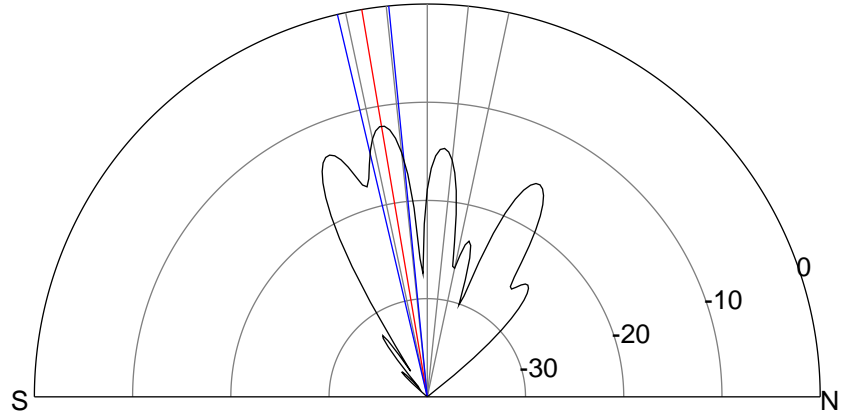
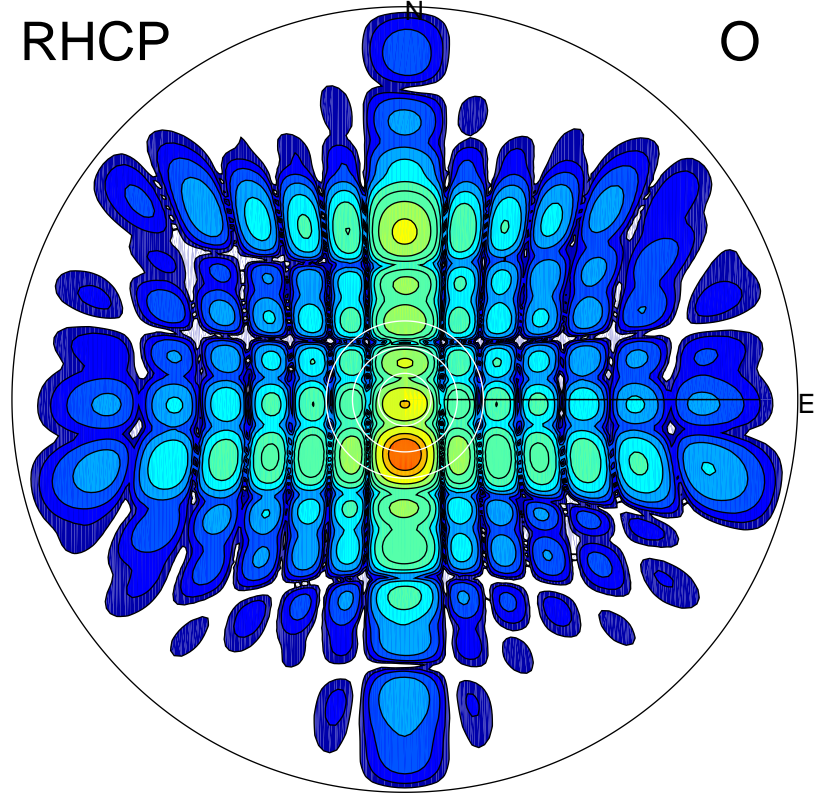
LHCP

X



RHCP

O



ERP 20.7 MW

Peak gain 14.1 dBi at Az 178 Zen 10
RHCP gain 24.7 dBi
N-S peak 14.1 dBi at Zen -9.6
N-S -3 dB beamwidth 7.6 deg.

ERP 331.6 MW

Peak gain 26.1 dBi at Az 180 Zen 13
LHCP gain 11.9 dBi
N-S peak 26.2 dBi at Zen -12.5
N-S -3 dB beamwidth 7.2 deg.