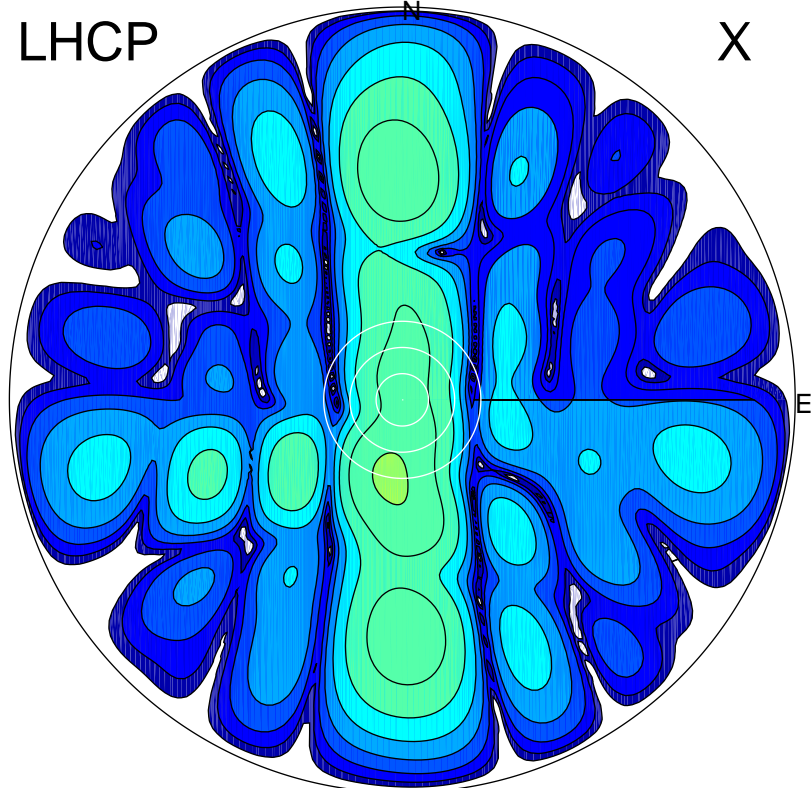


2016-03-09 16:00:05 A2 3.98000000 MHz 813.0 kW

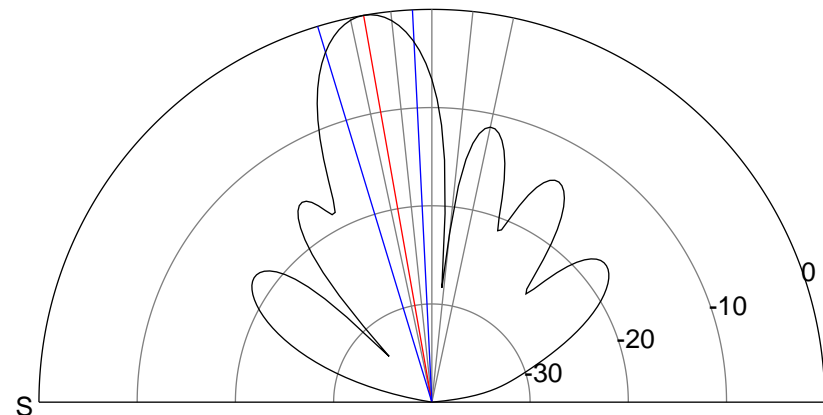
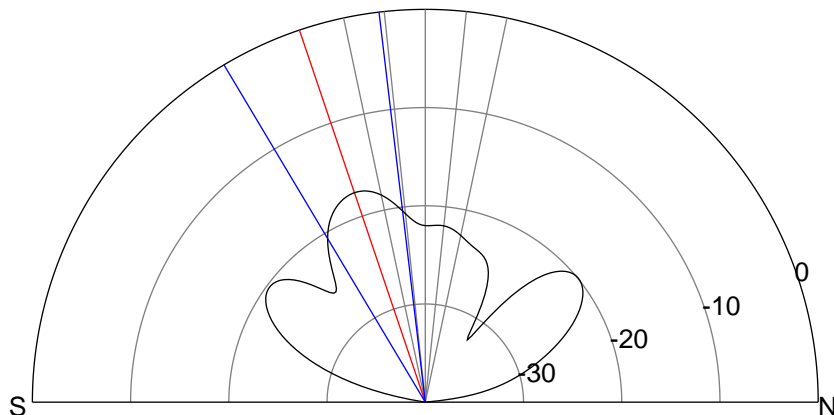
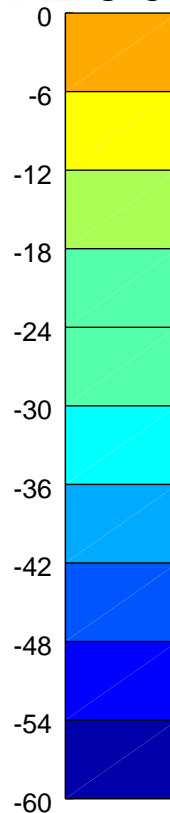
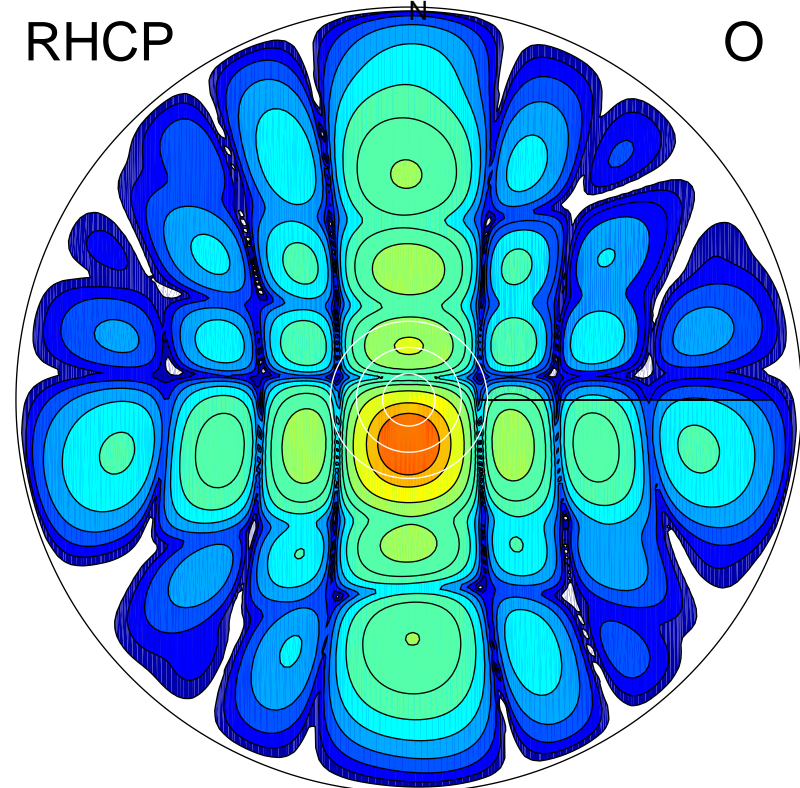
LHCP

X



RHCP

O



### ERP 2.5 MW

Peak gain 4.9 dBi at Az 189 Zen 18  
RHCP gain 17.9 dBi  
N-S peak 4.4 dBi at Zen -18.7  
N-S -3 dB beamwidth 24.1 deg.

### ERP 125.5 MW

Peak gain 21.9 dBi at Az 179 Zen 10  
LHCP gain 2.7 dBi  
N-S peak 21.9 dBi at Zen -10.0  
N-S -3 dB beamwidth 14.1 deg.