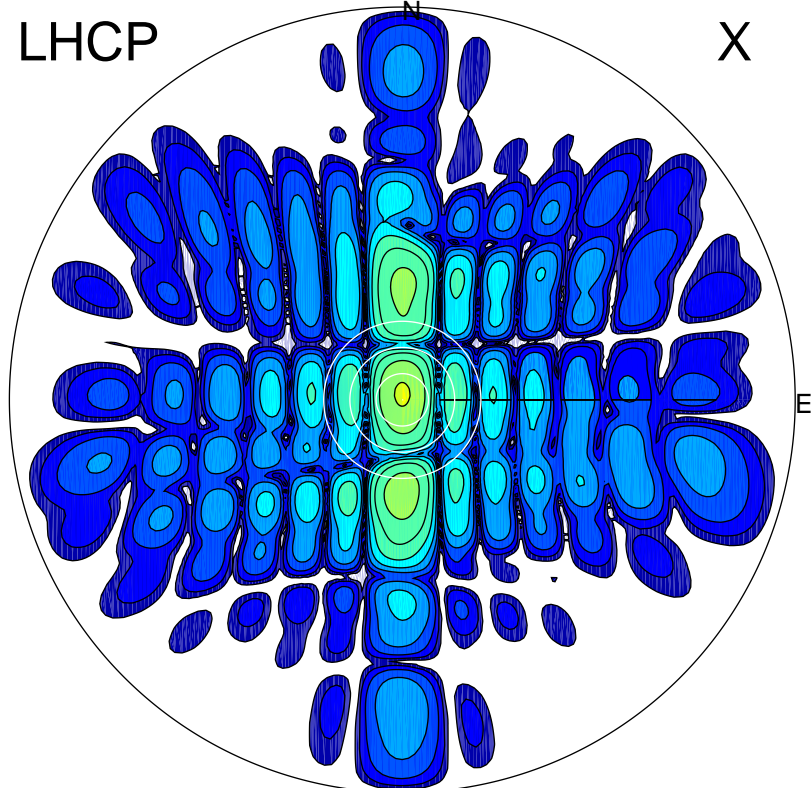


2016-03-09 11:54:05 A1 5.42000000 MHz 631.0 kW

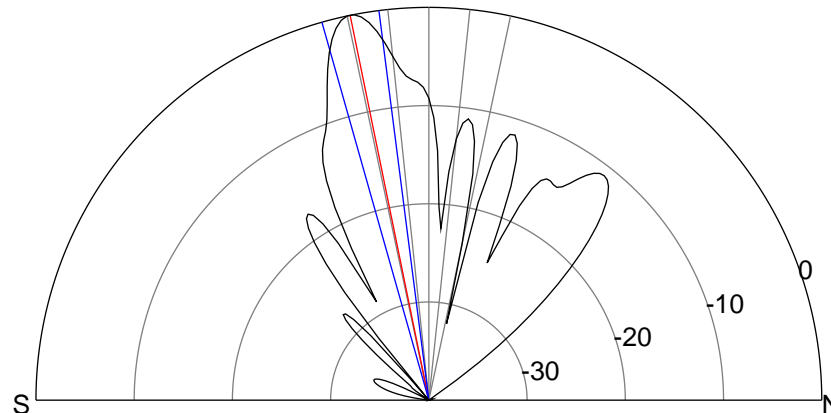
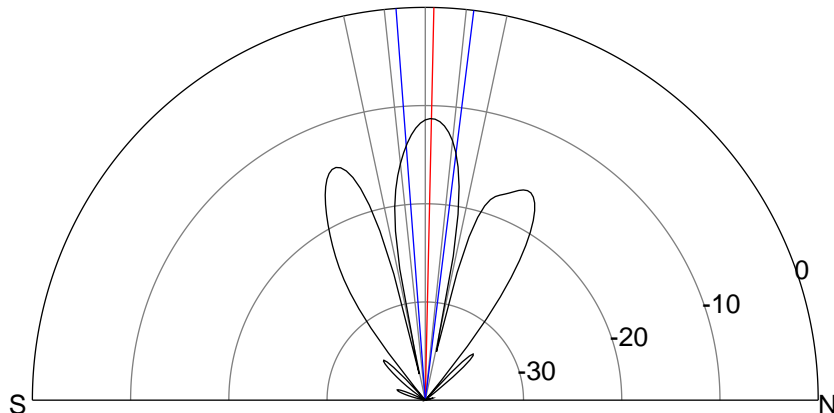
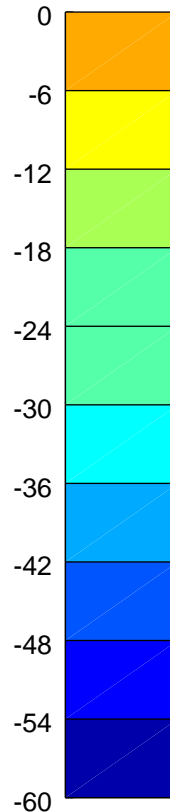
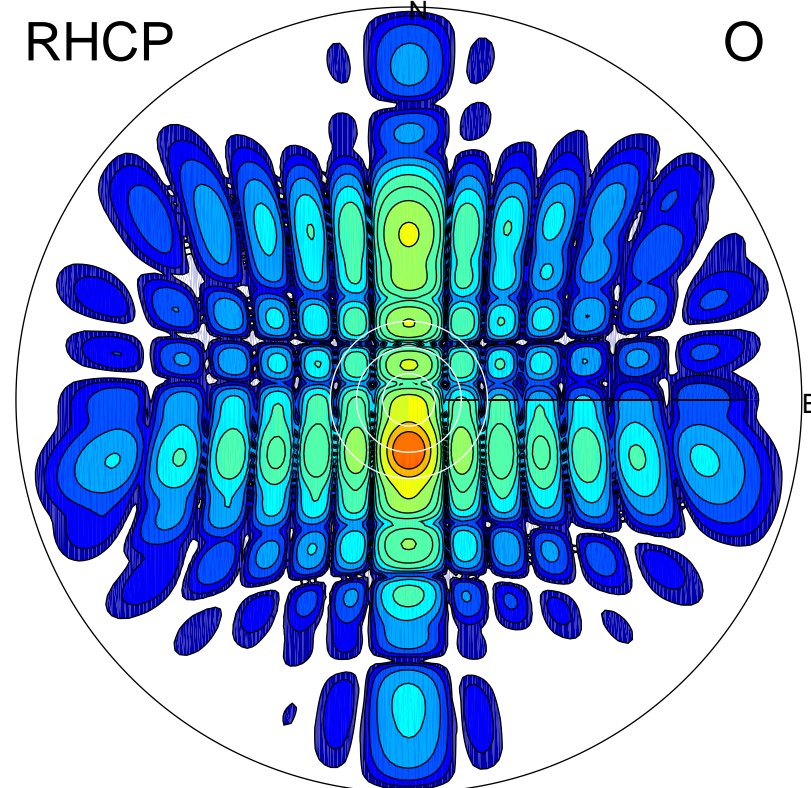
LHCP

X



RHCP

O



**ERP 17.2 MW**

Peak gain 14.4 dBi at Az 356 Zen 1

RHCP gain 14.5 dBi

N-S peak 14.4 dBi at Zen 1.3

N-S -3 dB beamwidth 11.4 deg.

**ERP 232.8 MW**

Peak gain 25.7 dBi at Az 180 Zen 12

LHCP gain -8.9 dBi

N-S peak 25.7 dBi at Zen -11.6

N-S -3 dB beamwidth 8.5 deg.