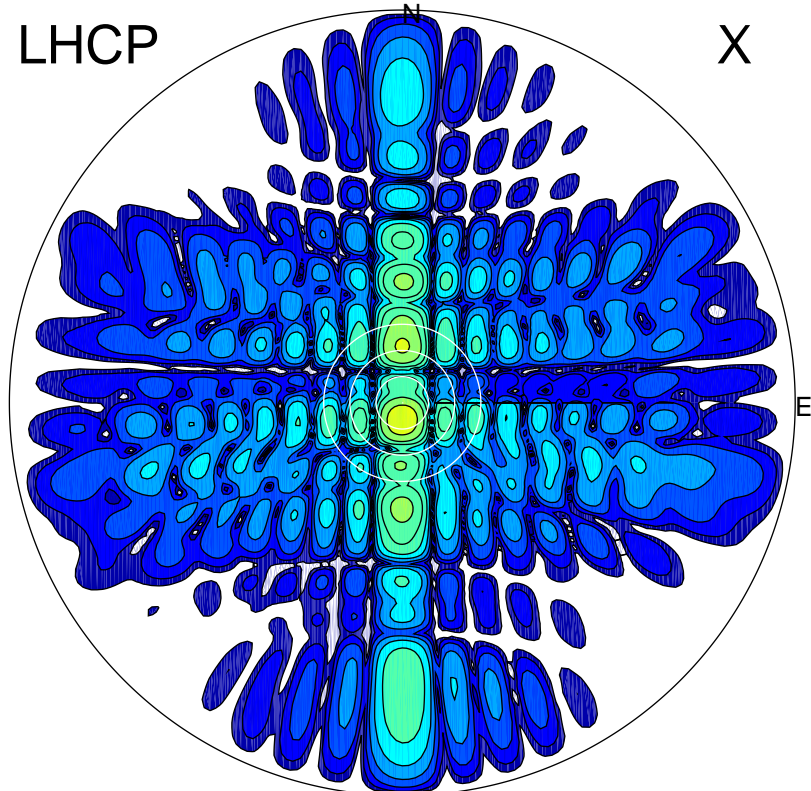


2016-03-09 11:42:05 A1 6.70000000 MHz 611.0 kW

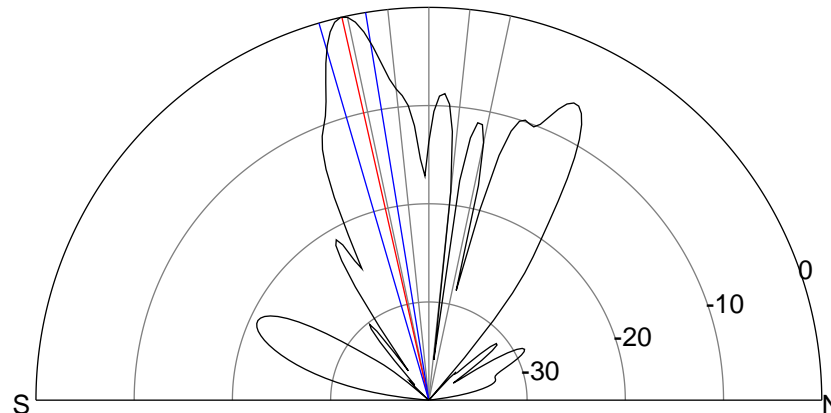
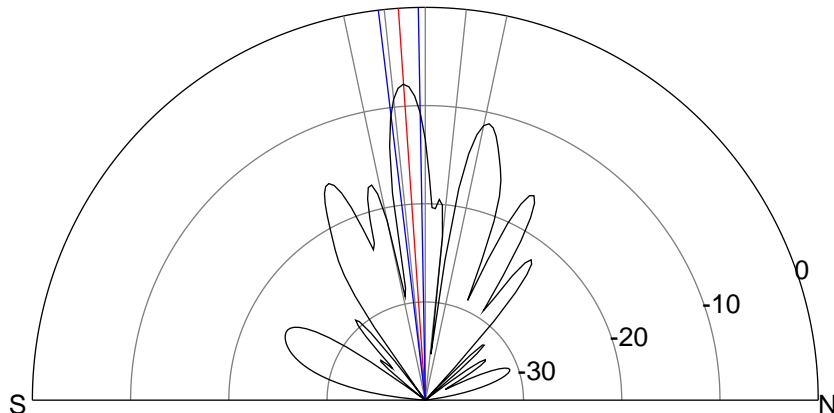
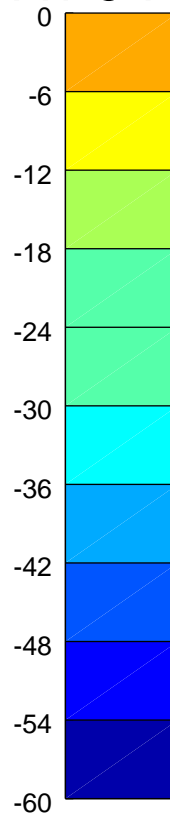
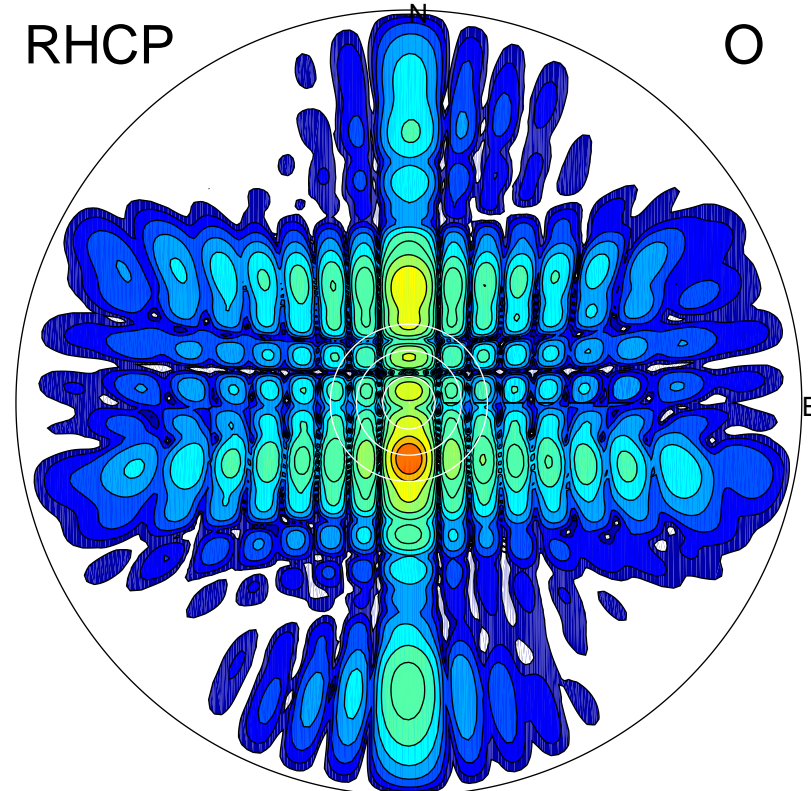
LHCP

X



RHCP

O



ERP 46.1 MW

Peak gain 18.8 dBi at Az 182 Zen 4
RHCP gain 16.6 dBi
N-S peak 18.8 dBi at Zen -3.9
N-S -3 dB beamwidth 5.8 deg.

ERP 274.5 MW

Peak gain 26.5 dBi at Az 180 Zen 13
LHCP gain 8.1 dBi
N-S peak 26.5 dBi at Zen -12.8
N-S -3 dB beamwidth 7.0 deg.