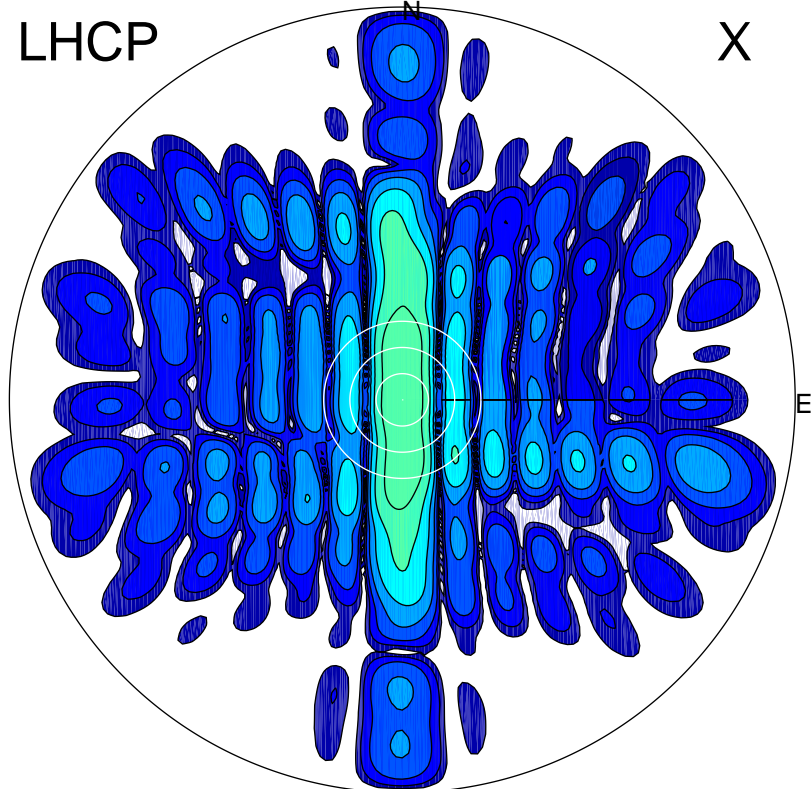


2016-03-09 11:30:05 A1 5.42000000 MHz 704.0 kW

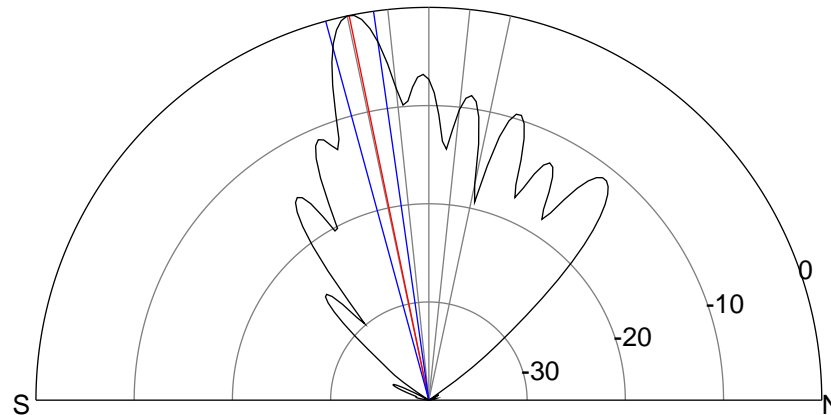
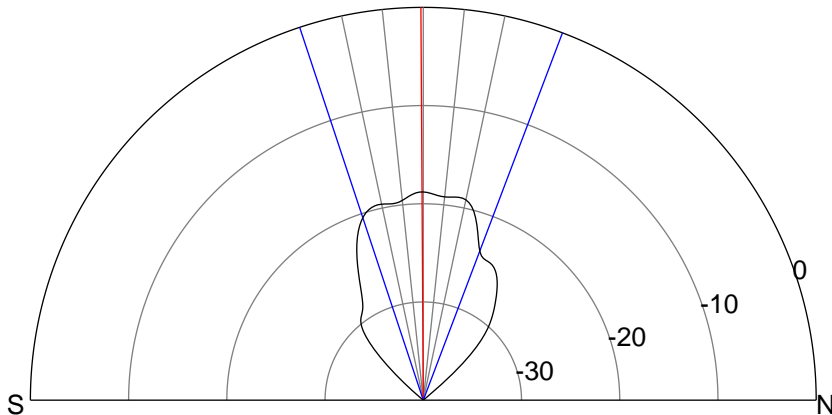
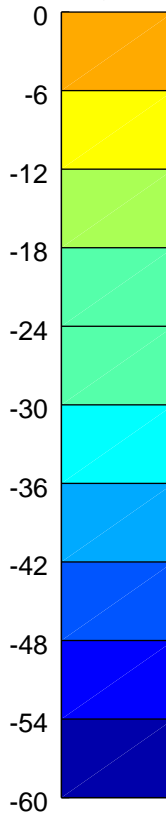
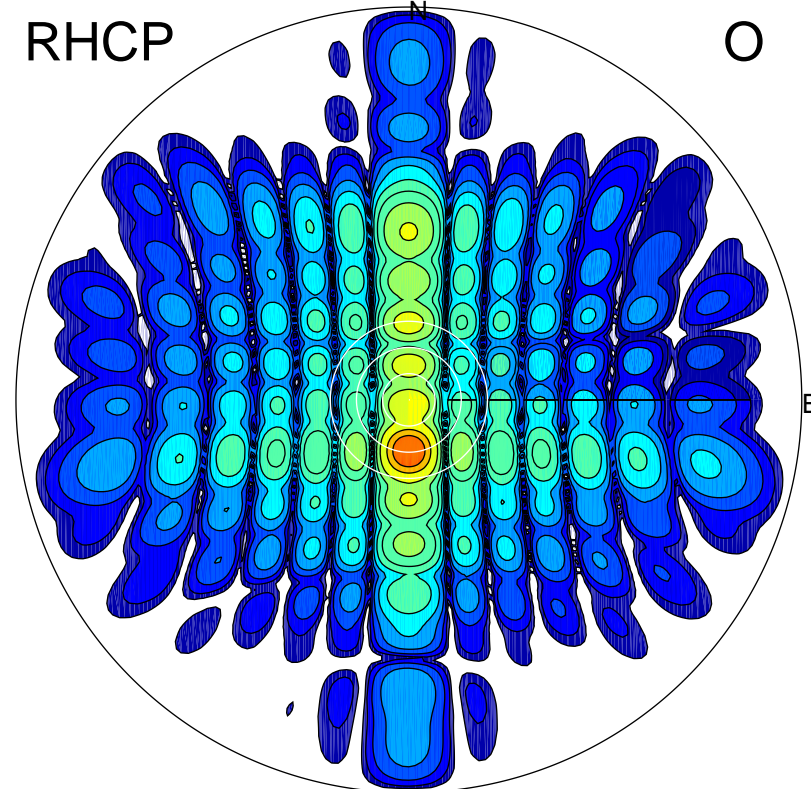
LHCP

X



RHCP

O



ERP 3.8 MW

Peak gain 7.4 dBi at Az 94 Zen 0
RHCP gain 18.8 dBi
N-S peak 7.4 dBi at Zen -0.3
N-S -3 dB beamwidth 39.1 deg.

ERP 291.6 MW

Peak gain 26.2 dBi at Az 180 Zen 12
LHCP gain 6.6 dBi
N-S peak 26.2 dBi at Zen -11.7
N-S -3 dB beamwidth 7.1 deg.