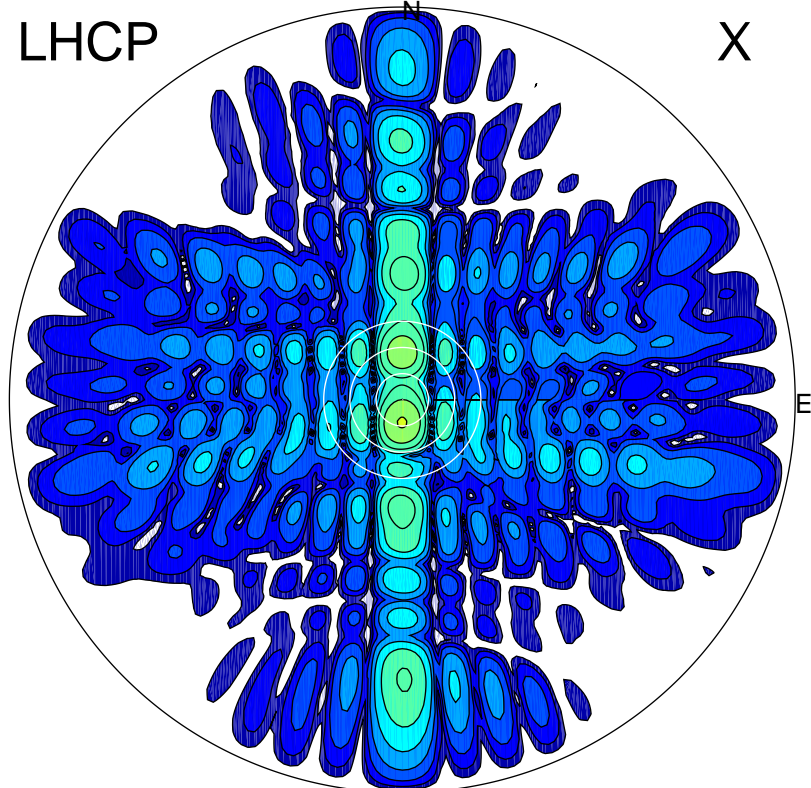


2016-03-09 11:18:05 A1 6.70000000 MHz 686.0 kW

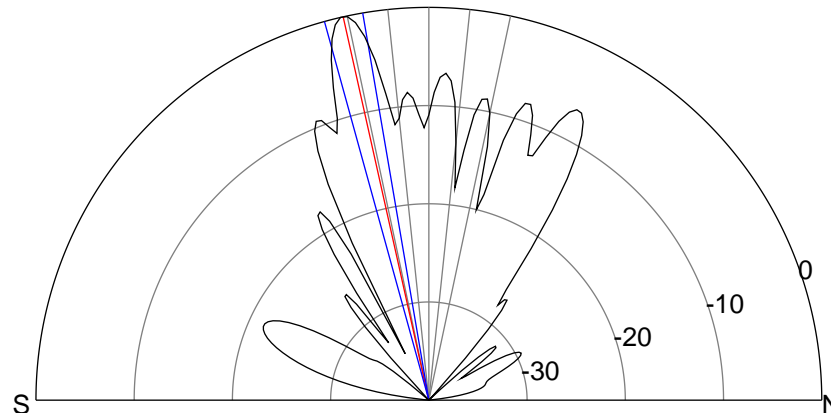
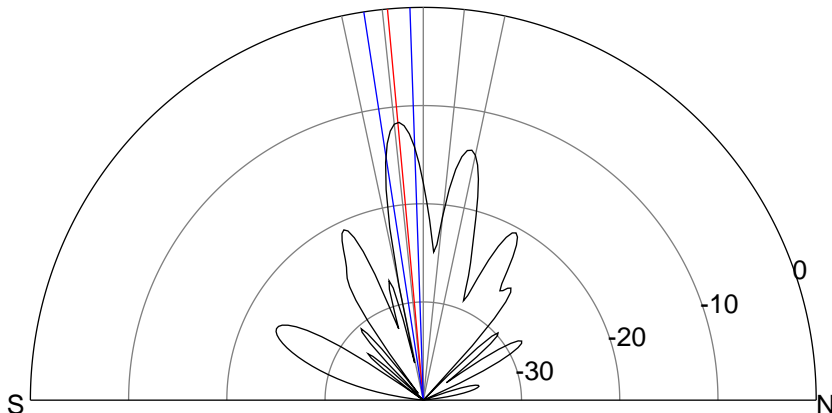
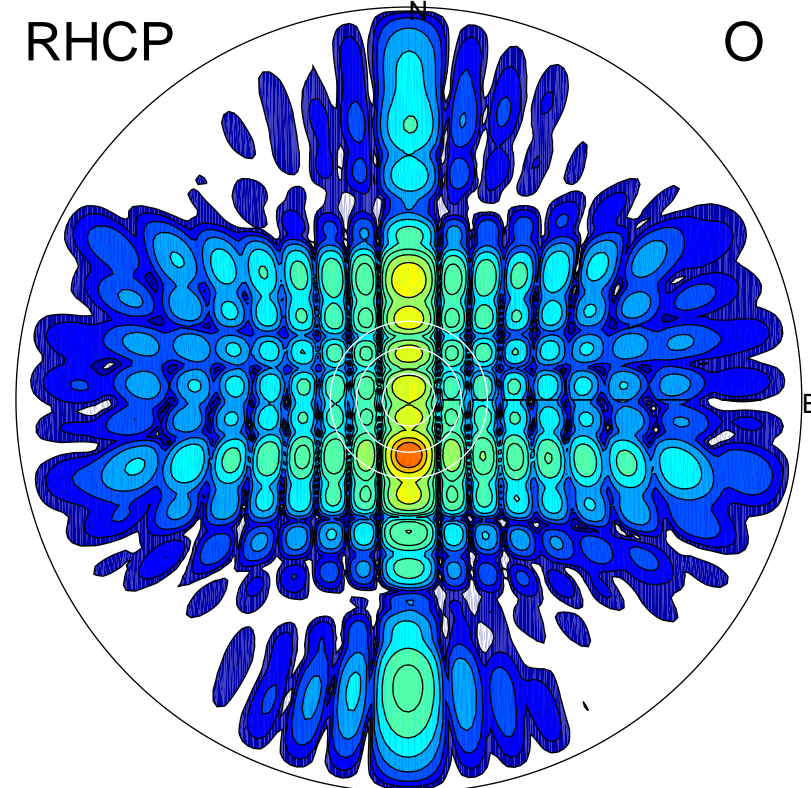
LHCP

X



RHCP

O



### ERP 24.2 MW

Peak gain 15.5 dBi at Az 181 Zen 5  
RHCP gain 17.8 dBi  
N-S peak 15.5 dBi at Zen -5.2  
N-S -3 dB beamwidth 6.8 deg.

### ERP 349.8 MW

Peak gain 27.1 dBi at Az 180 Zen 13  
LHCP gain -9.0 dBi  
N-S peak 27.1 dBi at Zen -12.6  
N-S -3 dB beamwidth 5.7 deg.