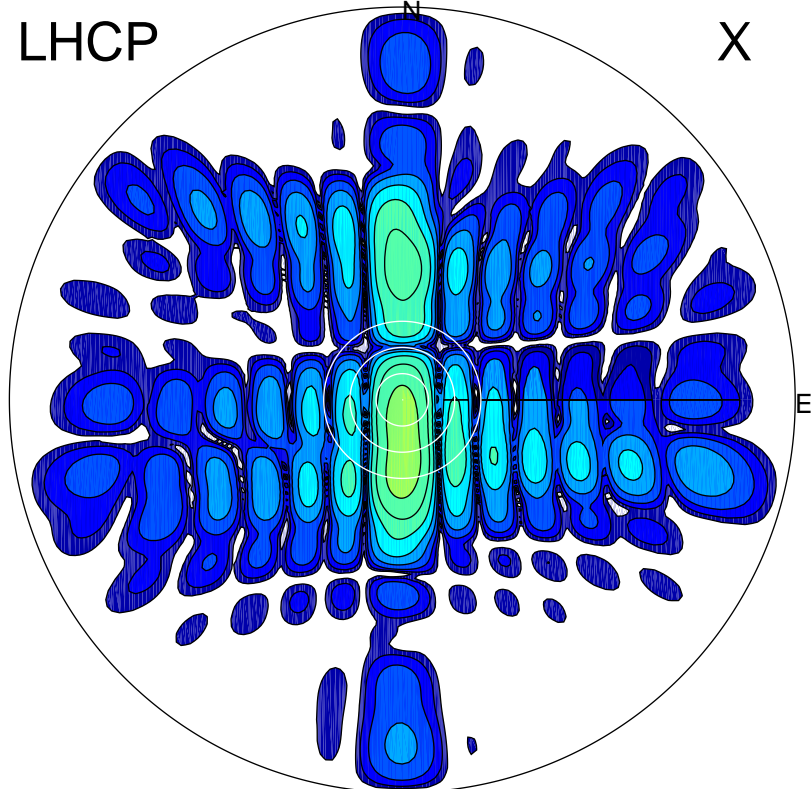


2016-03-09 10:00:35 A1 5.42000000 MHz 781.0 kW

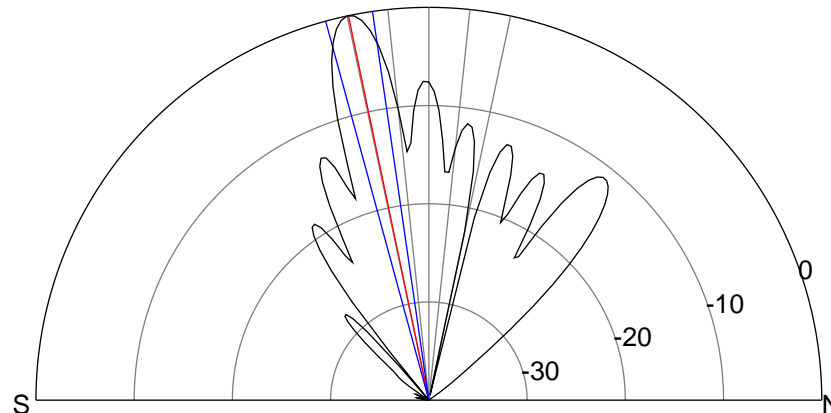
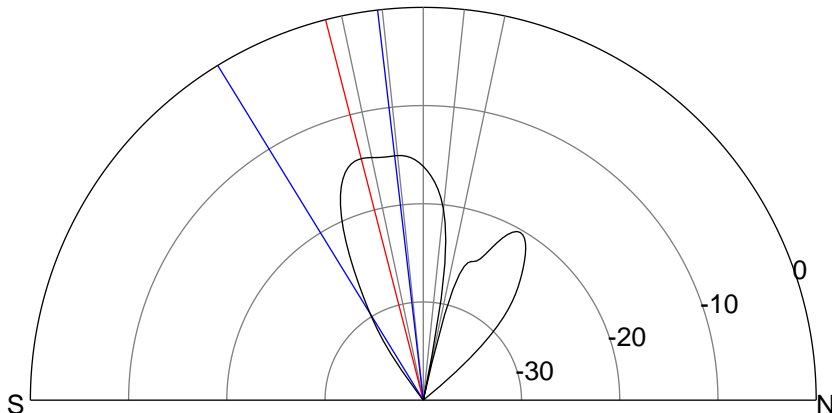
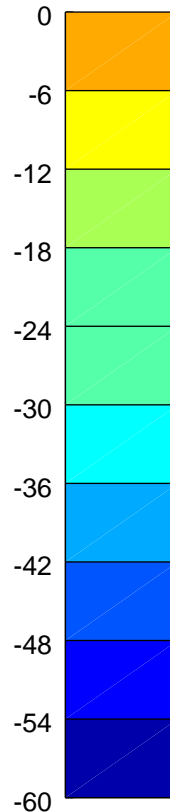
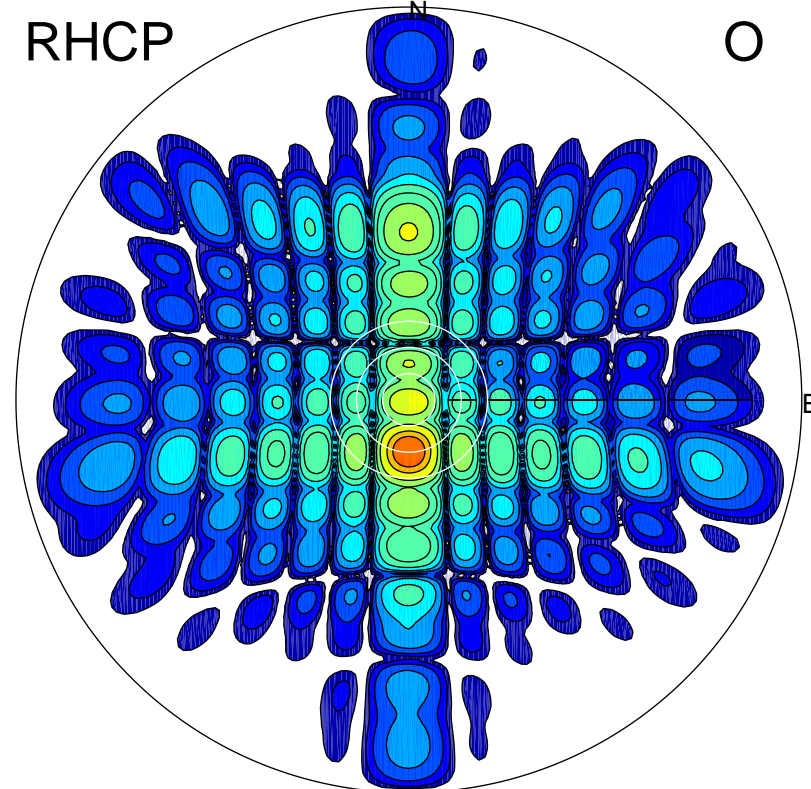
LHCP

X



RHCP

O



ERP 12.5 MW

Peak gain 12.0 dBi at Az 179 Zen 14
RHCP gain 25.5 dBi
N-S peak 12.0 dBi at Zen -14.4
N-S -3 dB beamwidth 24.9 deg.

ERP 359.1 MW

Peak gain 26.6 dBi at Az 180 Zen 12
LHCP gain 11.9 dBi
N-S peak 26.6 dBi at Zen -11.8
N-S -3 dB beamwidth 7.0 deg.