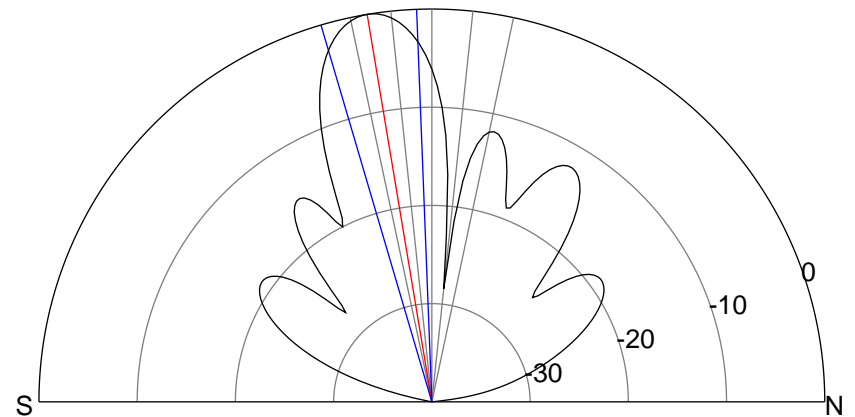
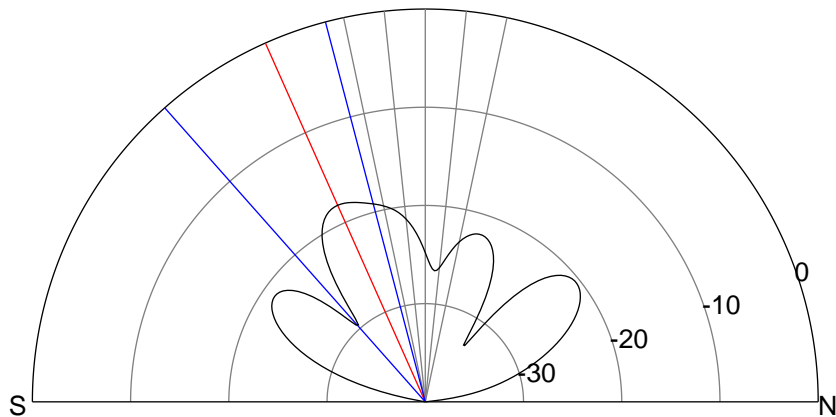
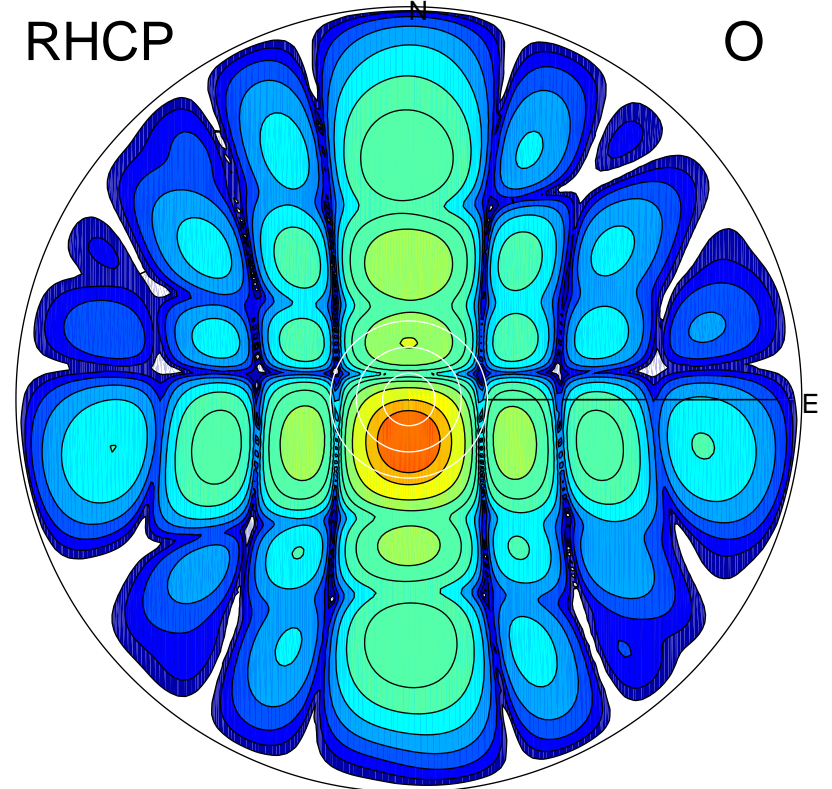
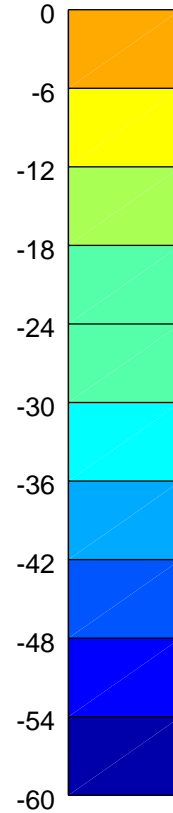
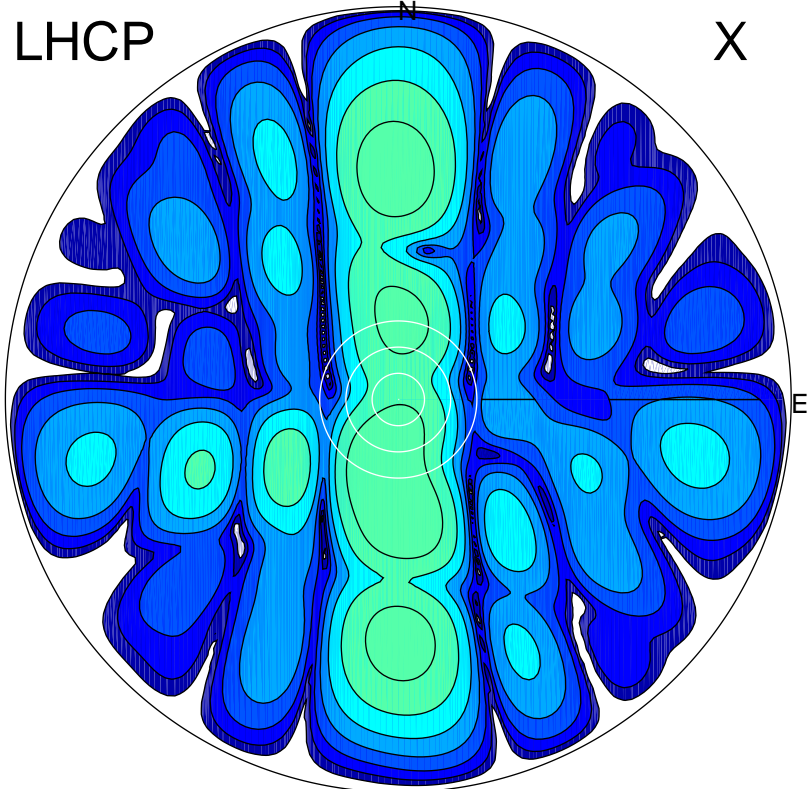


2016-03-07 16:06:35 A2 3.92000000 MHz 822.0 kW



### ERP 1.9 MW

Peak gain 3.7 dBi at Az 183 Zen 23  
RHCP gain 9.8 dBi  
N-S peak 3.7 dBi at Zen -24.0  
N-S -3 dB beamwidth 26.8 deg.

### ERP 123.8 MW

Peak gain 21.8 dBi at Az 179 Zen 9  
LHCP gain 1.5 dBi  
N-S peak 21.8 dBi at Zen -9.5  
N-S -3 dB beamwidth 14.2 deg.