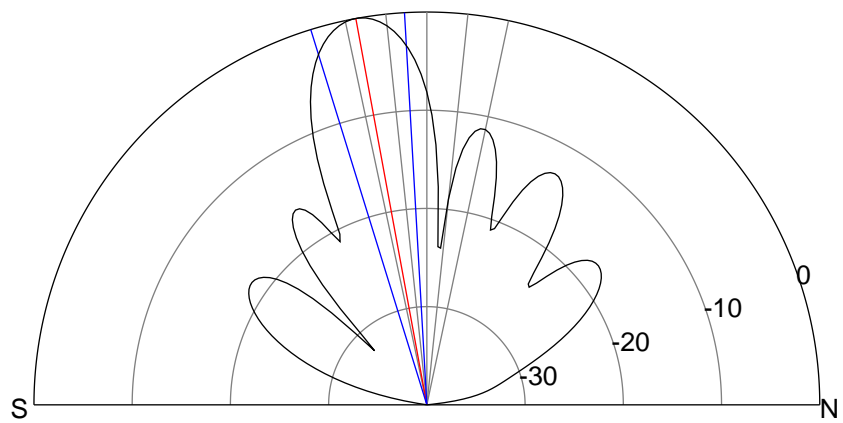
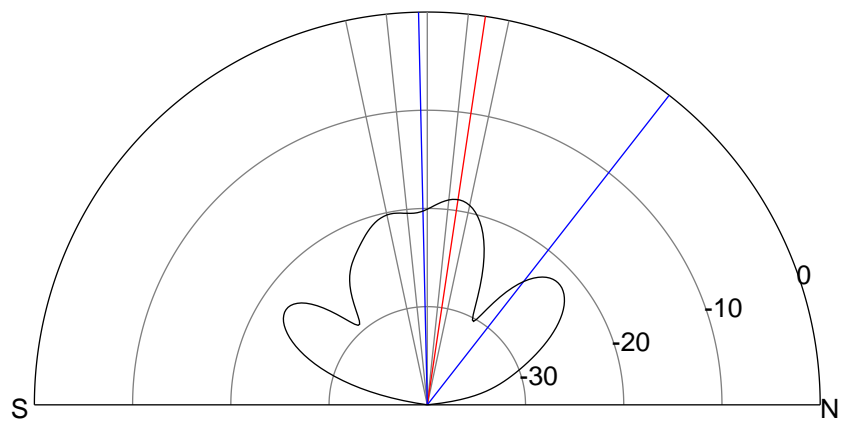
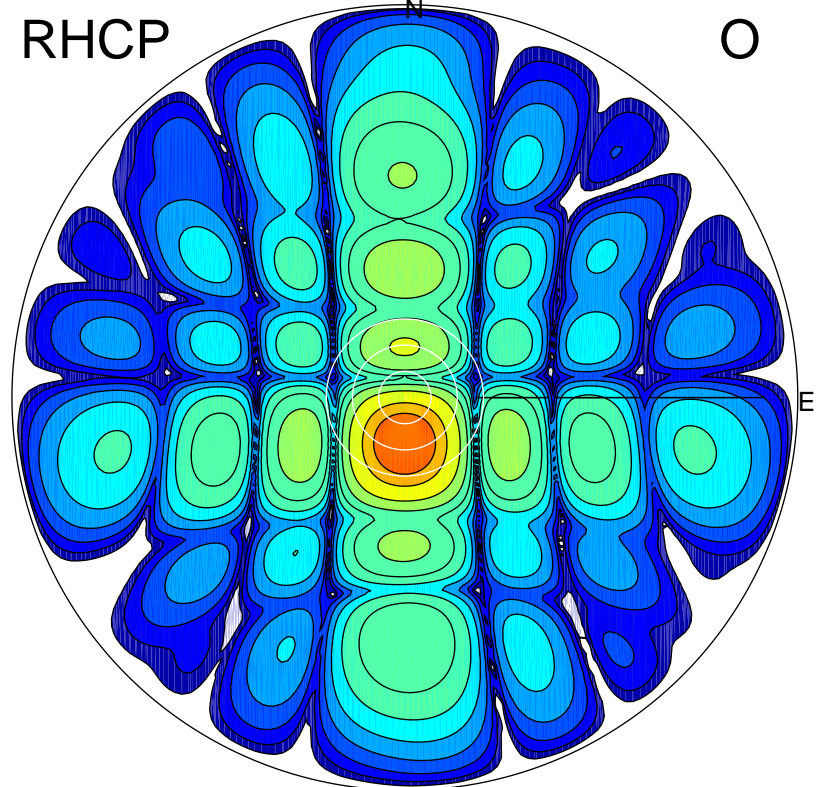
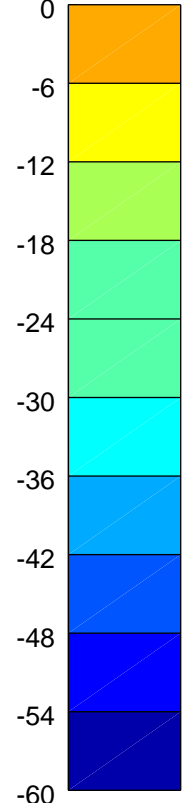
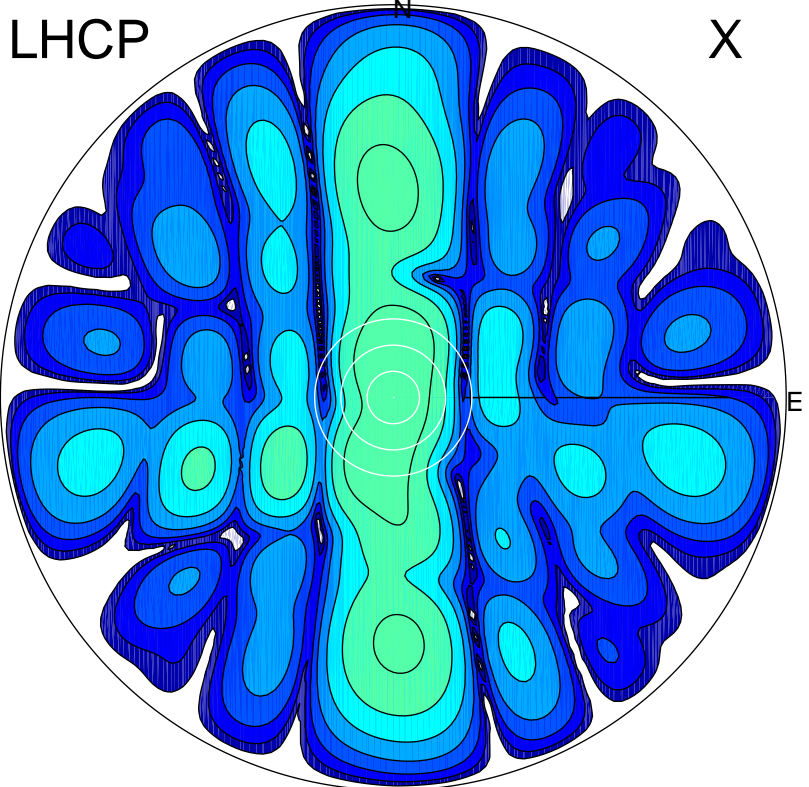


2016-03-07 16:00:35 A2 3.98000000 MHz 848.0 kW



ERP 1.7 MW

Peak gain 3.1 dBi at Az 1 Zen 8
RHCP gain 8.2 dBi
N-S peak 3.1 dBi at Zen 8.5
N-S -3 dB beamwidth 39.3 deg.

ERP 133.1 MW

Peak gain 22.0 dBi at Az 180 Zen 10
LHCP gain 1.8 dBi
N-S peak 22.0 dBi at Zen -10.4
N-S -3 dB beamwidth 13.9 deg.