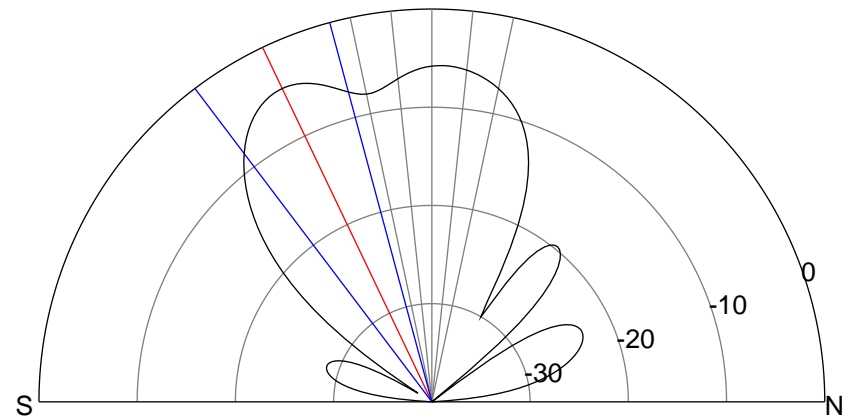
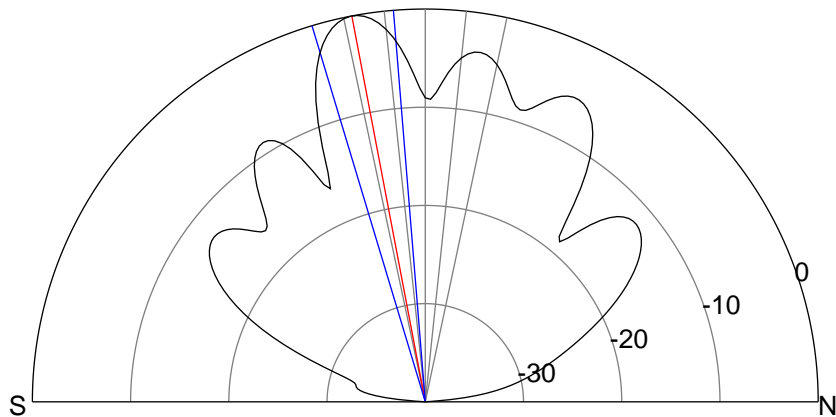
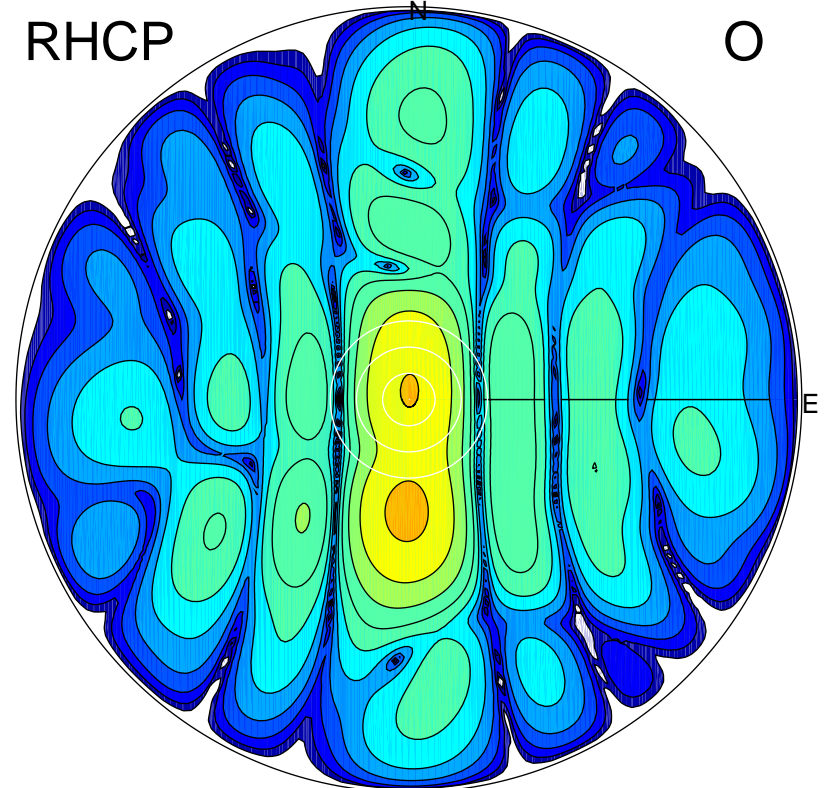
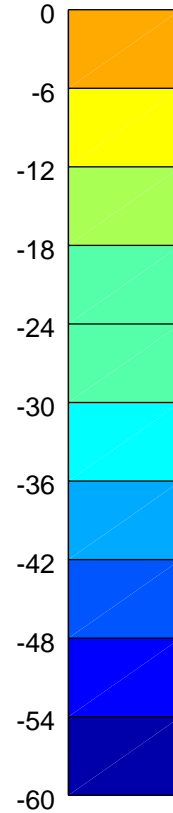
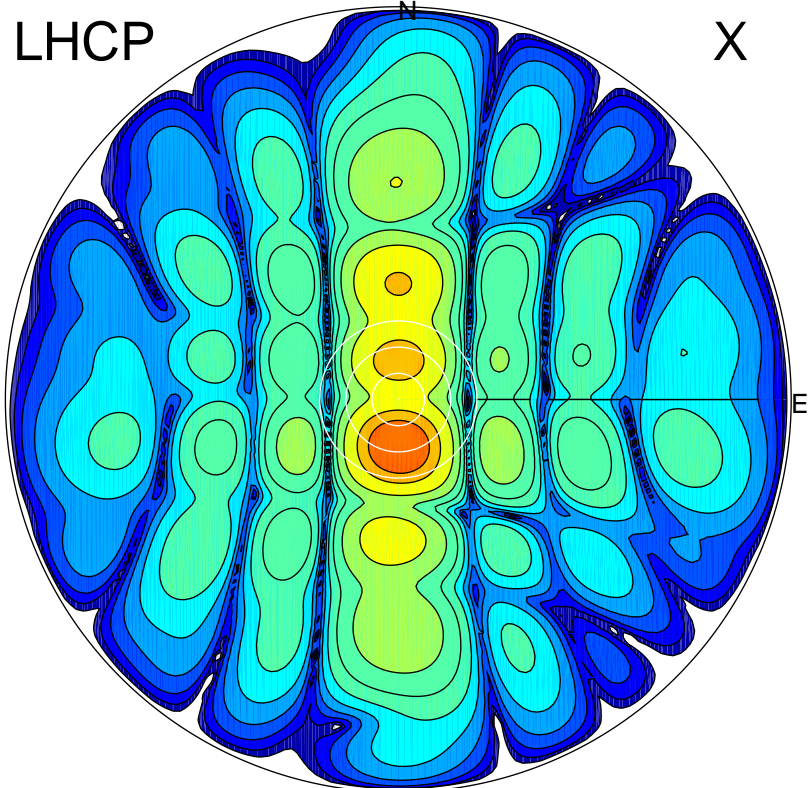


2016-03-04 17:06:00 A2 4.04000000 MHz 802.0 kW



ERP 56.8 MW

Peak gain 18.5 dBi at Az 179 Zen 11
RHCP gain 10.6 dBi
N-S peak 18.5 dBi at Zen -10.8
N-S -3 dB beamwidth 12.1 deg.

ERP 19.5 MW

Peak gain 13.9 dBi at Az 181 Zen 26
LHCP gain 4.8 dBi
N-S peak 13.9 dBi at Zen -25.5
N-S -3 dB beamwidth 22.0 deg.