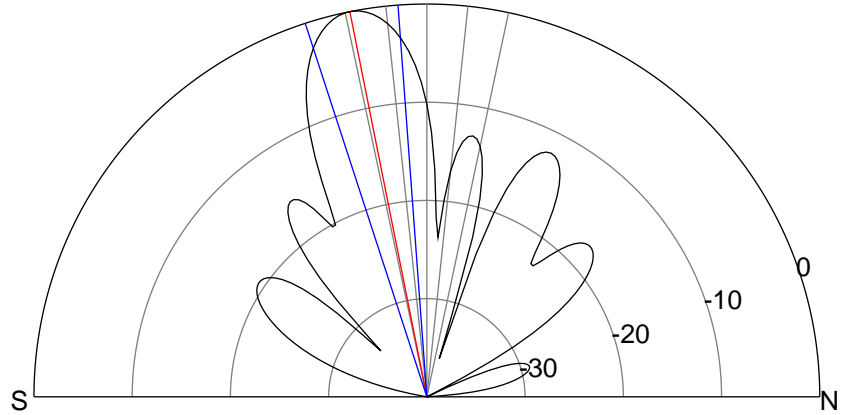
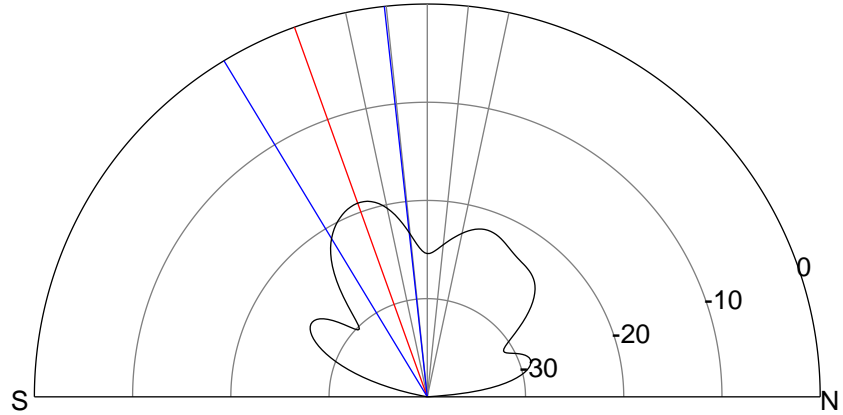
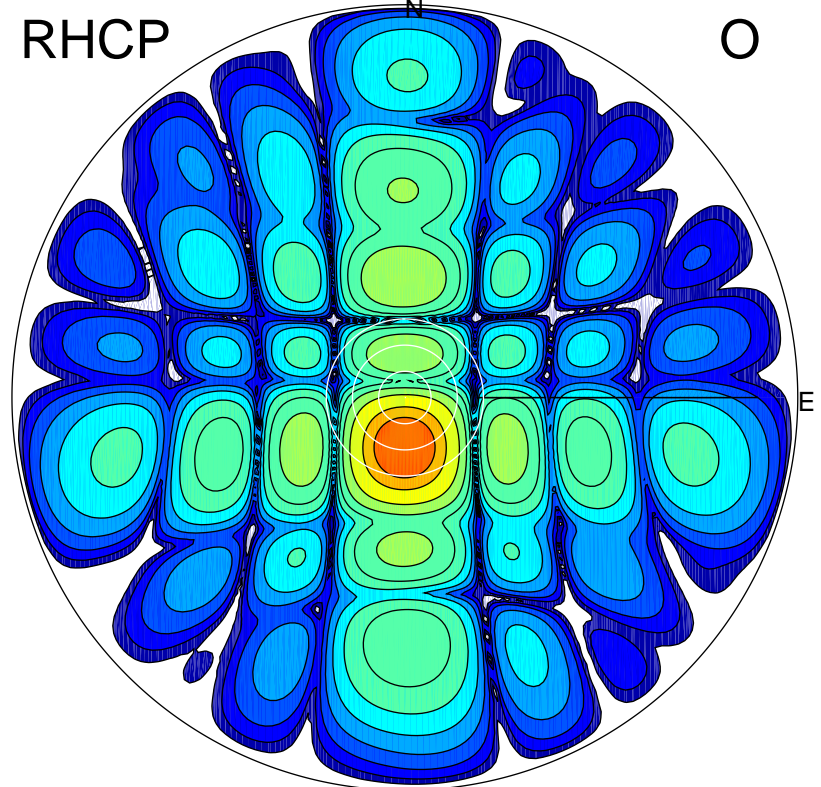
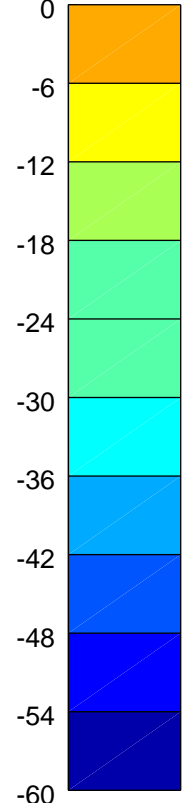
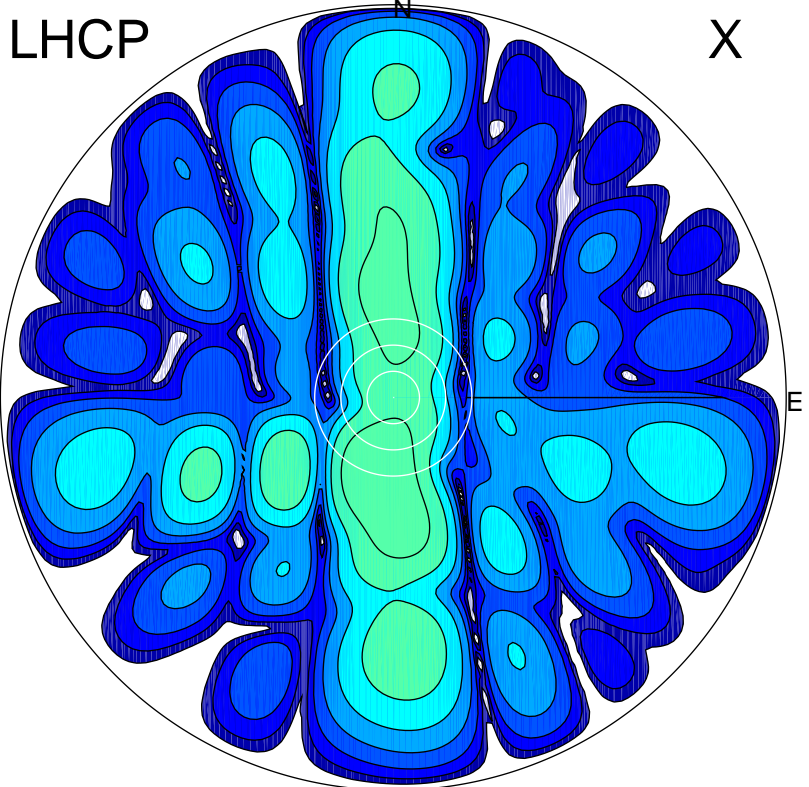


2016-03-04 17:02:02 A2 4.04000000 MHz 788.0 kW



ERP 2.0 MW

Peak gain 4.0 dBi at Az 192 Zen 18
RHCP gain 19.0 dBi
N-S peak 3.1 dBi at Zen -19.8
N-S -3 dB beamwidth 24.9 deg.

ERP 128.5 MW

Peak gain 22.1 dBi at Az 180 Zen 11
LHCP gain 1.4 dBi
N-S peak 22.1 dBi at Zen -11.3
N-S -3 dB beamwidth 13.8 deg.