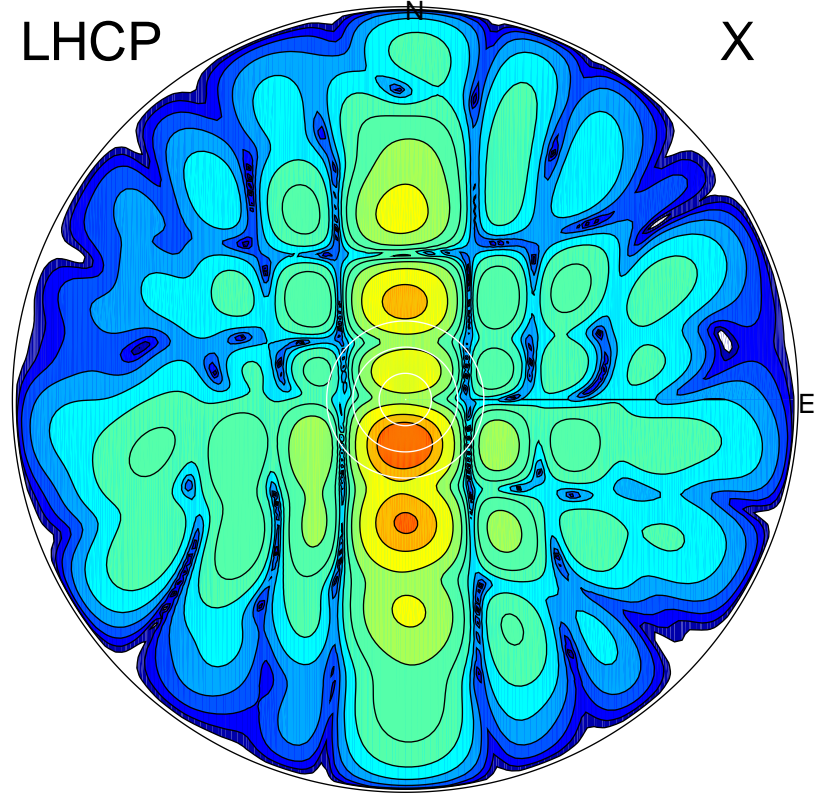


2016-03-04 16:51:00 A2 4.54400000 MHz 813.0 kW

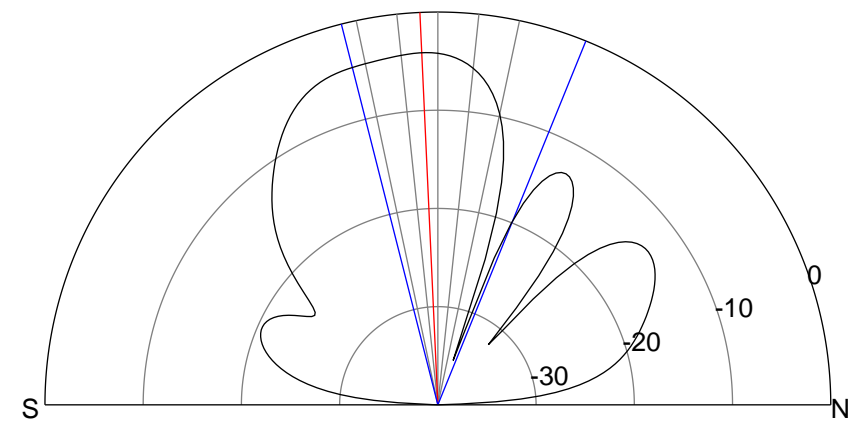
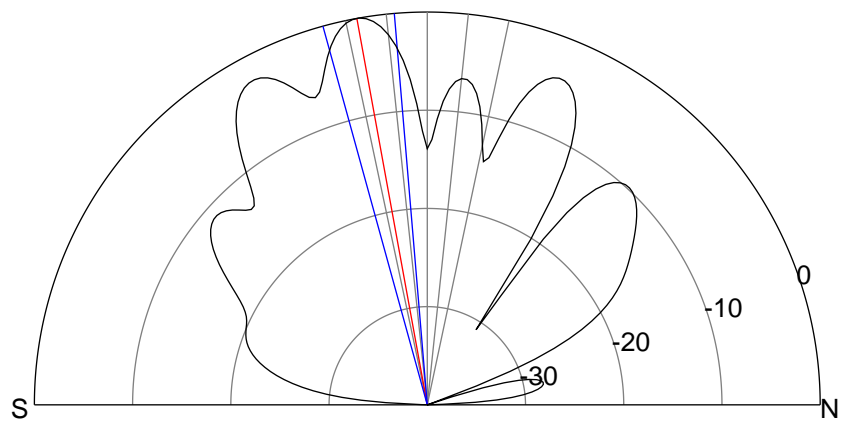
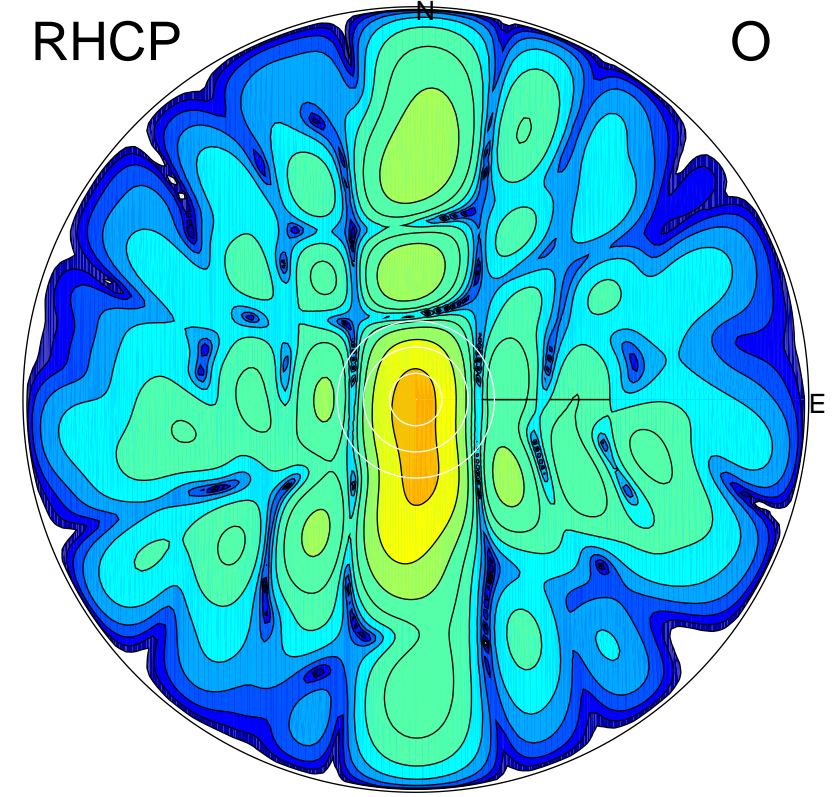
LHCP

X



RHCP

O



ERP 57.0 MW

Peak gain 18.5 dBi at Az 181 Zen 10
RHCP gain 14.0 dBi
N-S peak 18.5 dBi at Zen -10.3
N-S -3 dB beamwidth 10.6 deg.

ERP 22.2 MW

Peak gain 14.4 dBi at Az 189 Zen 3
LHCP gain 11.6 dBi
N-S peak 14.4 dBi at Zen -2.6
N-S -3 dB beamwidth 36.4 deg.