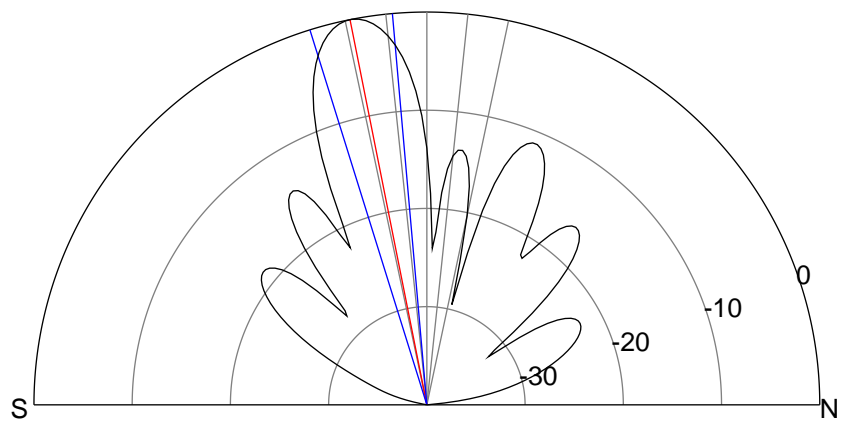
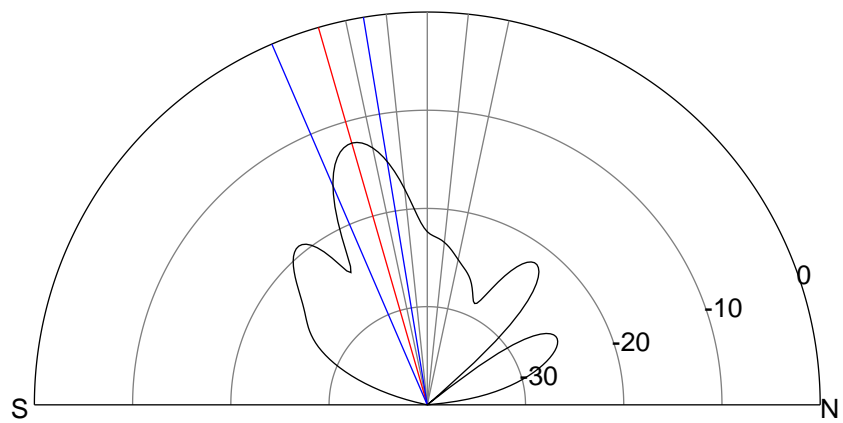
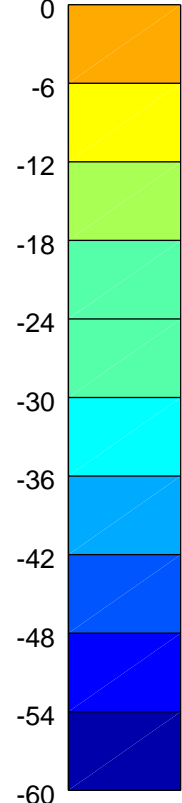
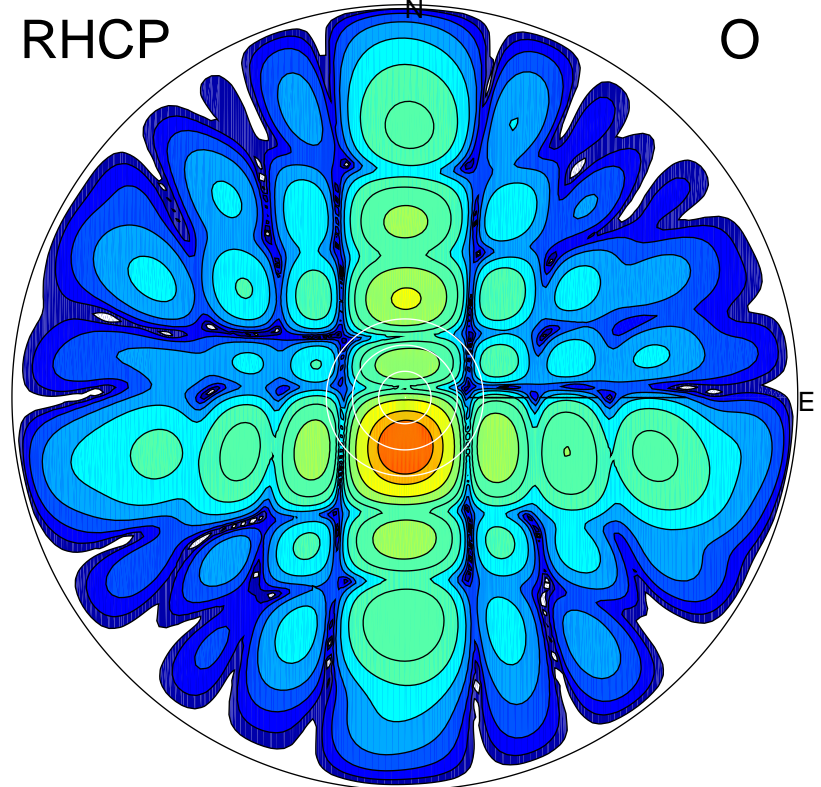
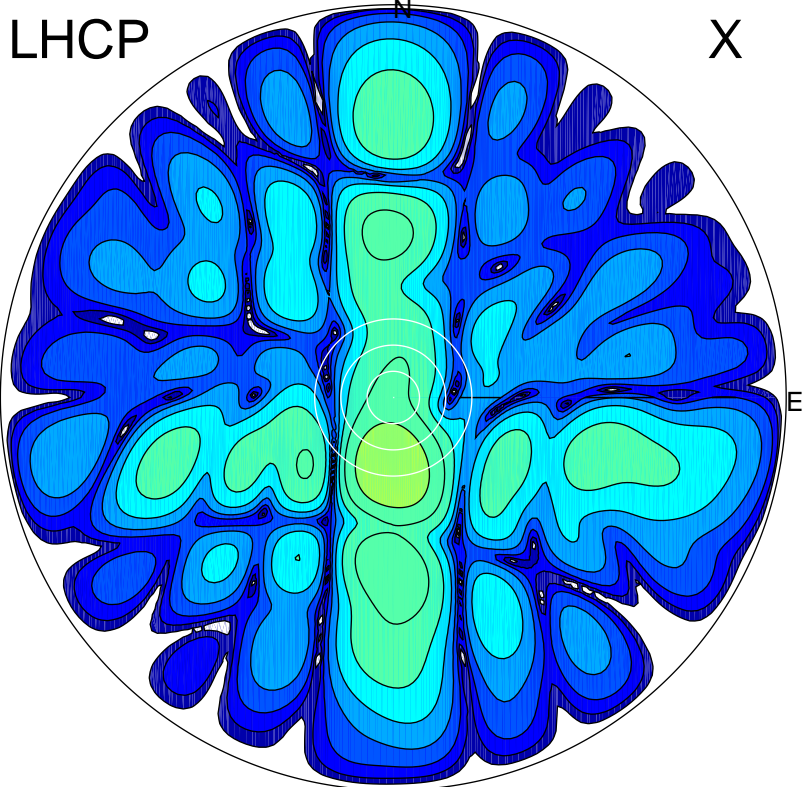


2016-03-04 16:47:02 A2 4.54400000 MHz 825.0 kW



ERP 9.3 MW

Peak gain 10.5 dBi at Az 183 Zen 16
RHCP gain 21.0 dBi
N-S peak 10.5 dBi at Zen -16.1
N-S -3 dB beamwidth 13.9 deg.

ERP 154.5 MW

Peak gain 22.7 dBi at Az 178 Zen 11
LHCP gain 8.9 dBi
N-S peak 22.7 dBi at Zen -11.3
N-S -3 dB beamwidth 12.3 deg.