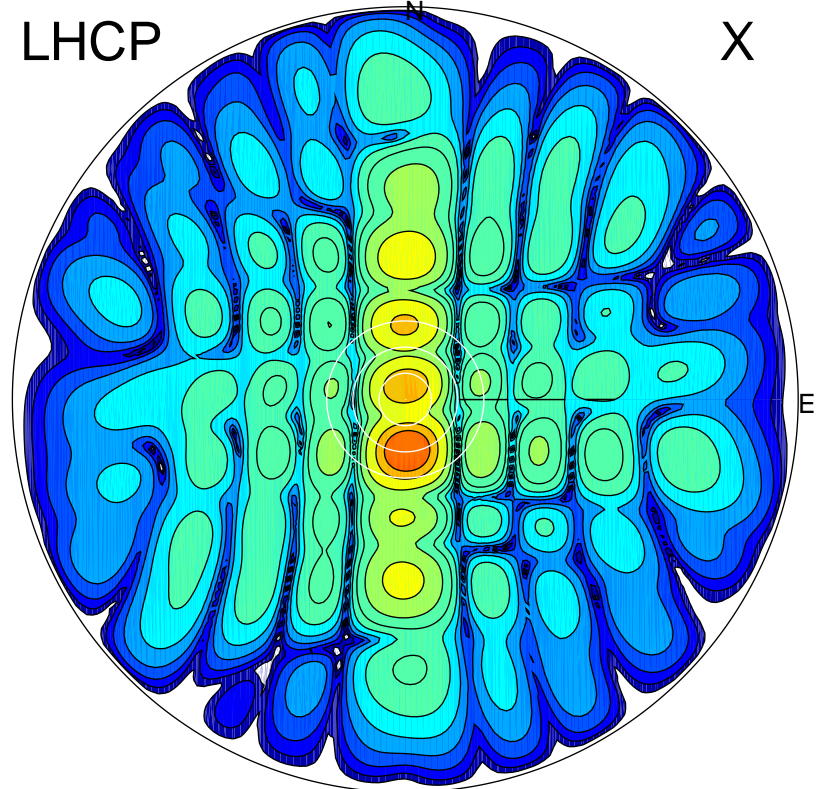


2016-03-04 16:36:00 A2 5.42300000 MHz 796.0 kW

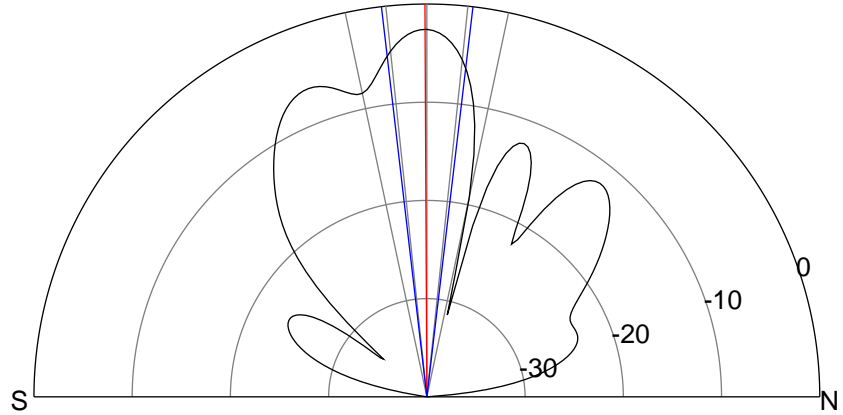
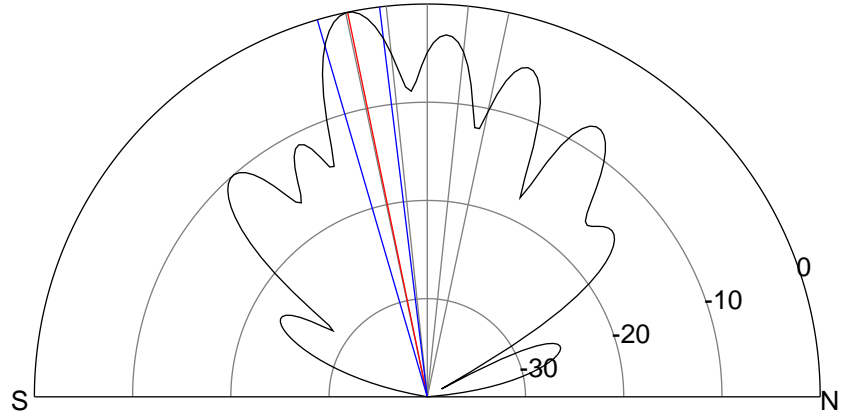
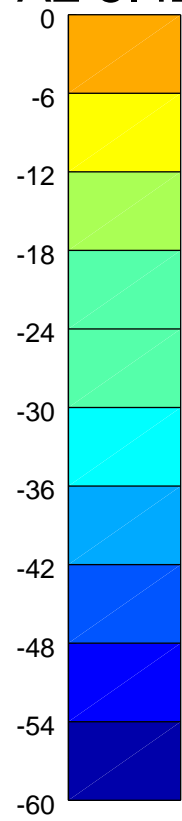
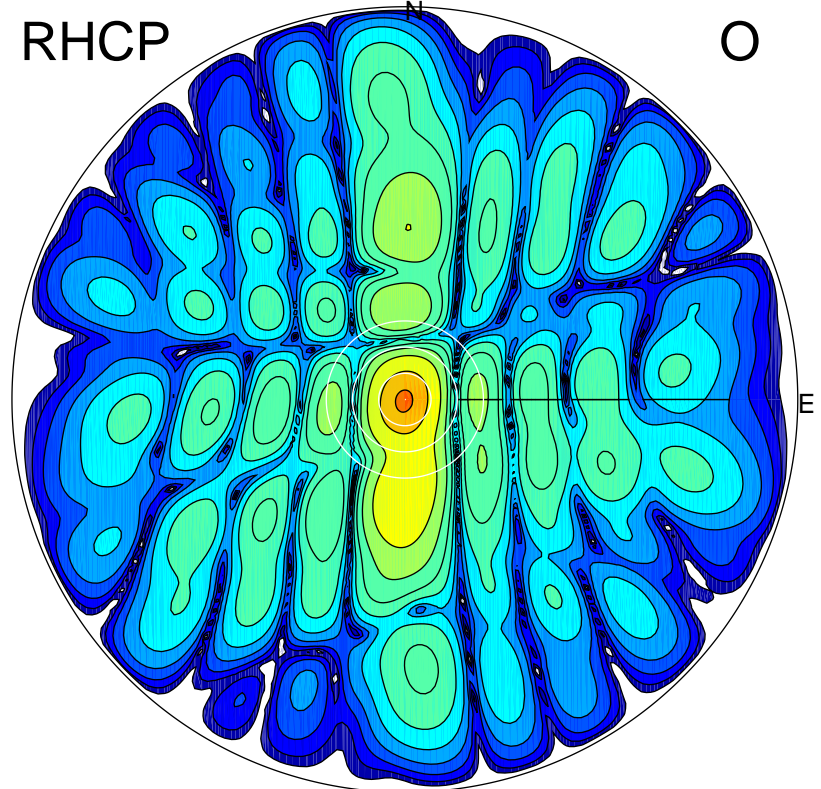
LHCP

X



RHCP

O



### ERP 84.0 MW

Peak gain 20.2 dBi at Az 177 Zen 12  
RHCP gain 12.0 dBi  
N-S peak 20.2 dBi at Zen -11.7  
N-S -3 dB beamwidth 9.3 deg.

### ERP 46.4 MW

Peak gain 17.7 dBi at Az 63 Zen 0  
LHCP gain 15.3 dBi  
N-S peak 17.7 dBi at Zen -0.3  
N-S -3 dB beamwidth 13.4 deg.