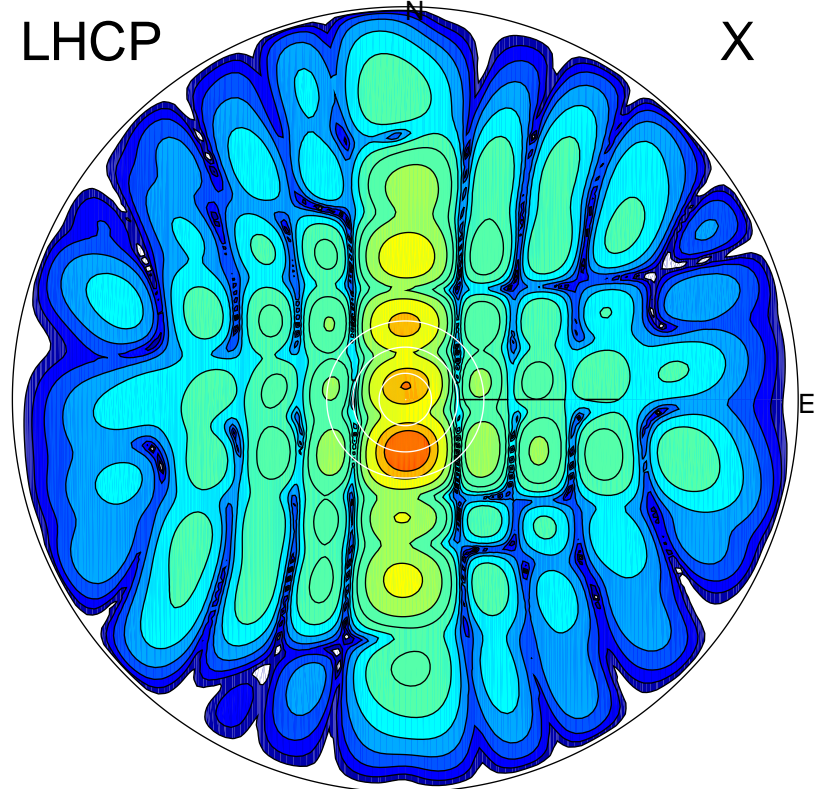


2016-03-04 16:21:00 A2 5.42300000 MHz 806.0 kW

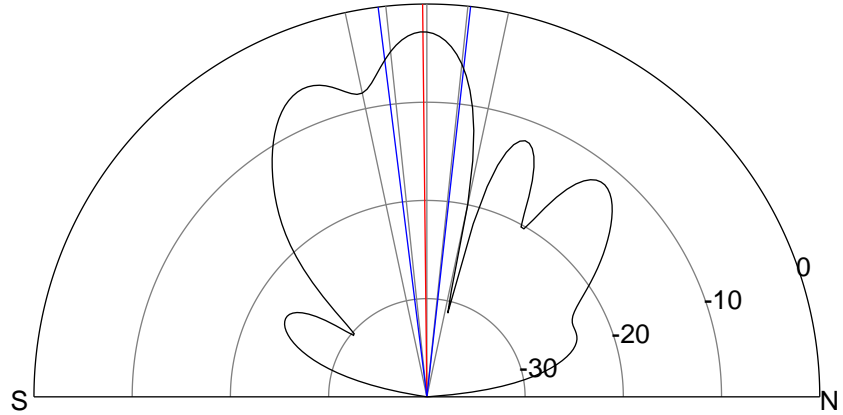
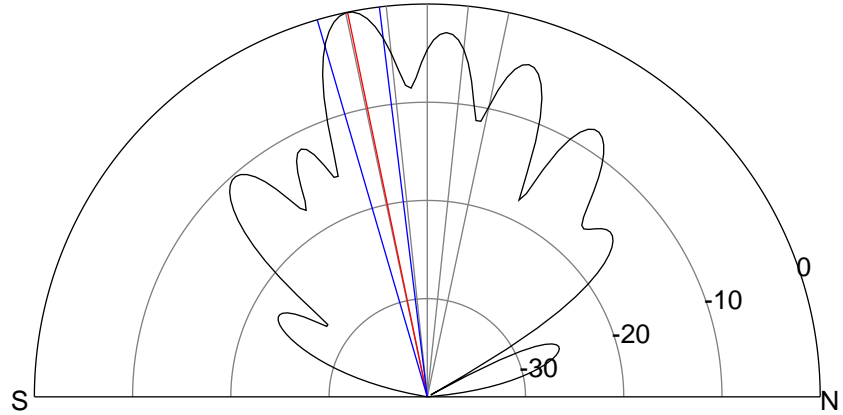
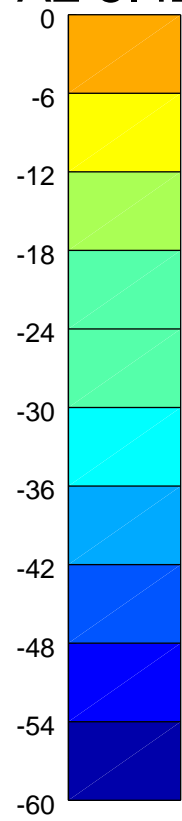
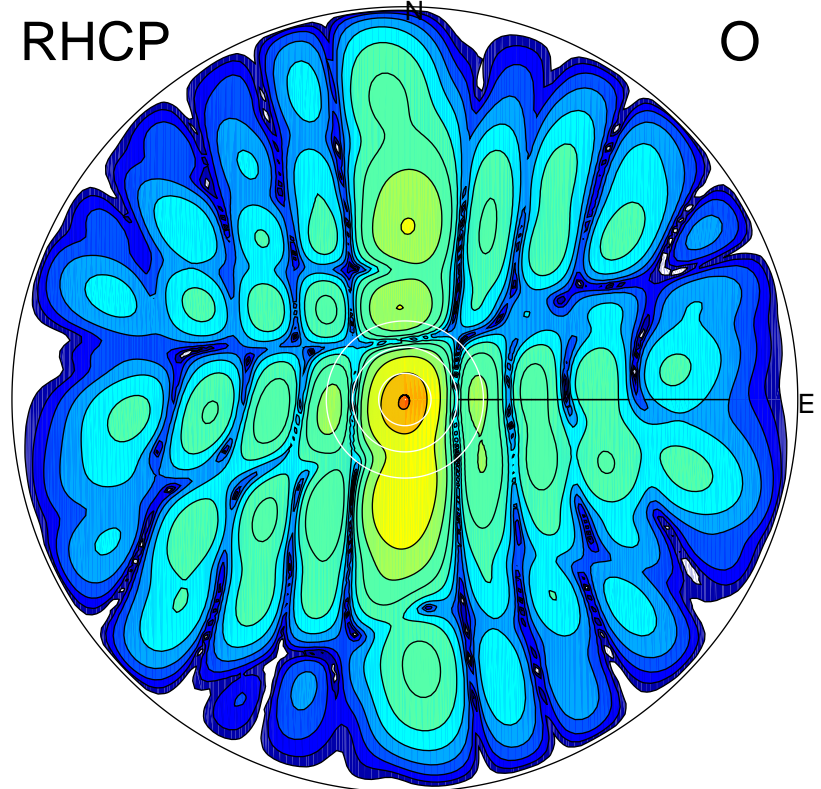
LHCP

X



RHCP

O



ERP 84.8 MW

Peak gain 20.2 dBi at Az 177 Zen 12
RHCP gain 12.0 dBi
N-S peak 20.2 dBi at Zen -11.7
N-S -3 dB beamwidth 9.3 deg.

ERP 44.3 MW

Peak gain 17.4 dBi at Az 195 Zen 1
LHCP gain 14.3 dBi
N-S peak 17.4 dBi at Zen -0.6
N-S -3 dB beamwidth 13.5 deg.