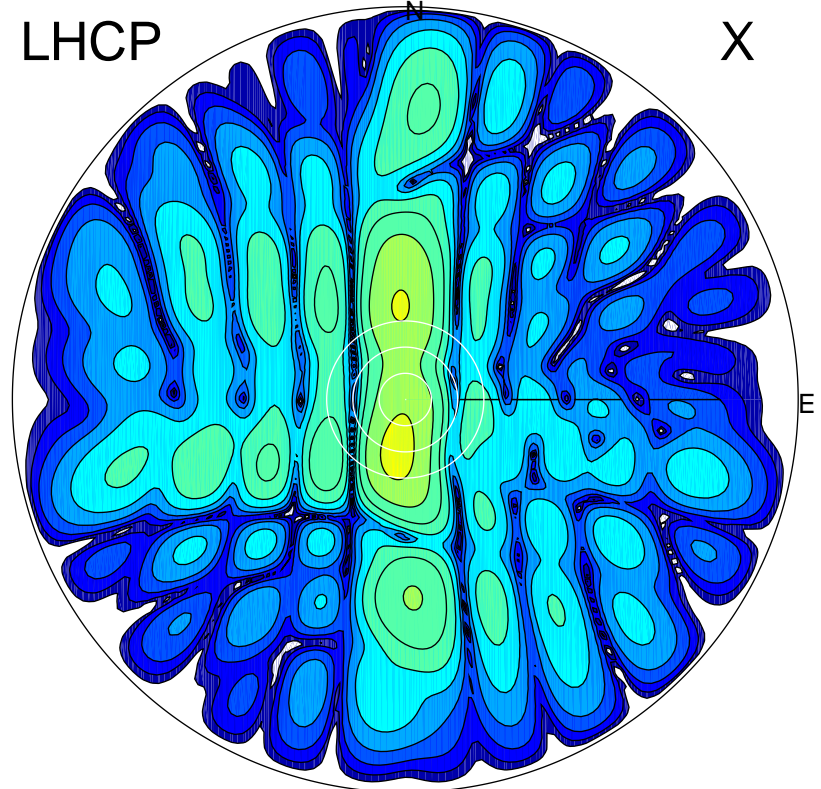


2016-03-04 16:17:02 A2 5.42300000 MHz 810.0 kW

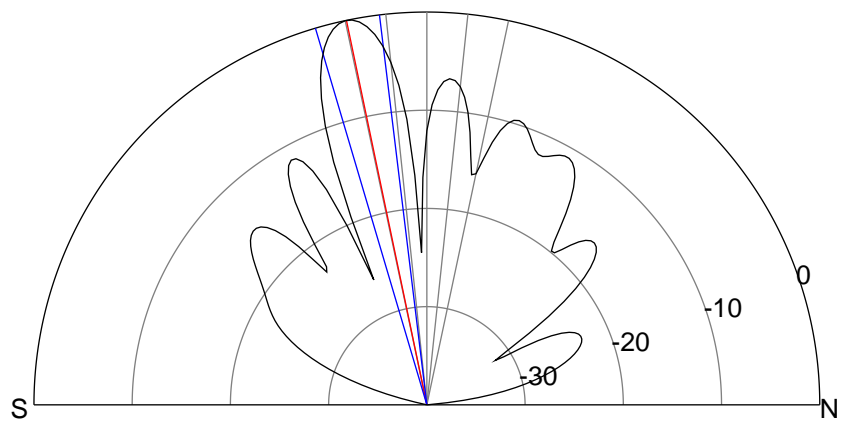
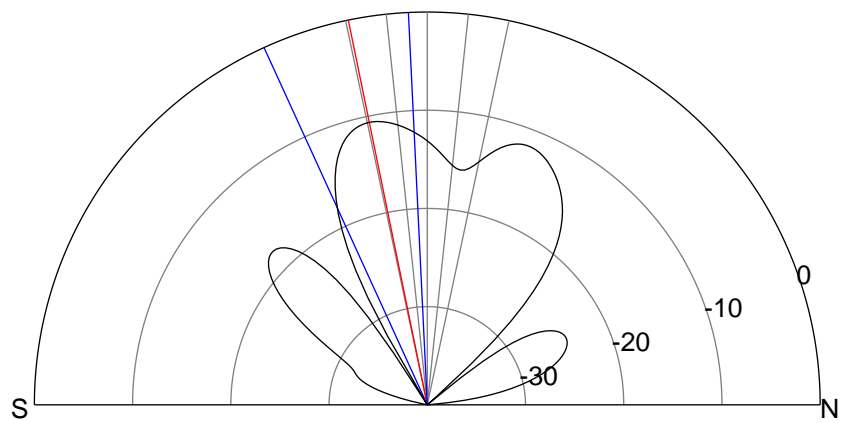
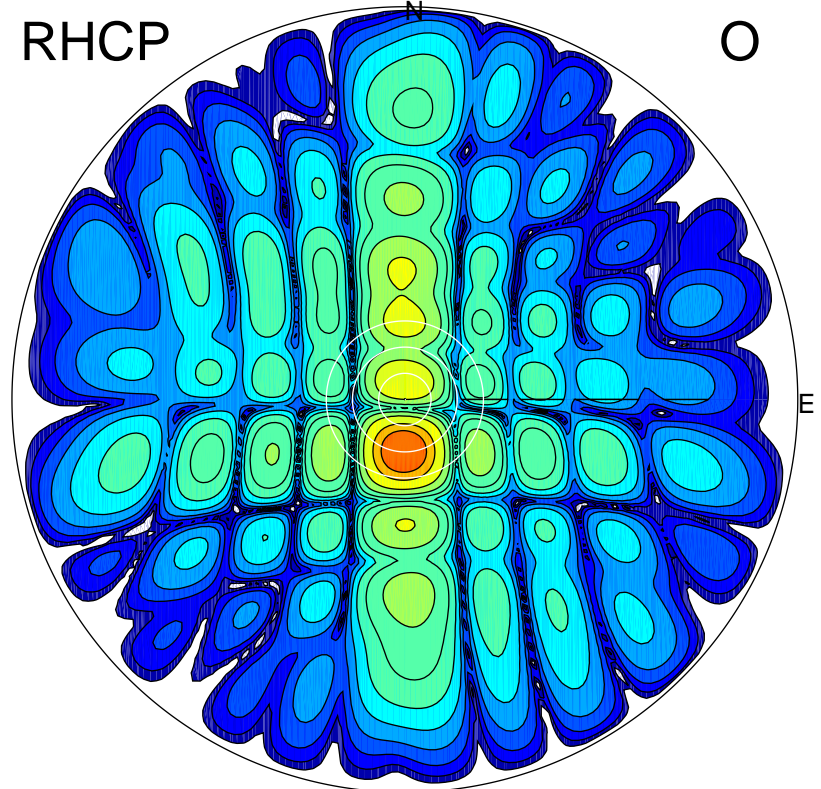
LHCP

X



RHCP

O



ERP 15.1 MW

Peak gain 12.7 dBi at Az 189 Zen 12
RHCP gain 22.6 dBi
N-S peak 12.3 dBi at Zen -11.6
N-S -3 dB beamwidth 21.8 deg.

ERP 158.2 MW

Peak gain 22.9 dBi at Az 182 Zen 12
LHCP gain 12.4 dBi
N-S peak 22.9 dBi at Zen -11.8
N-S -3 dB beamwidth 9.5 deg.