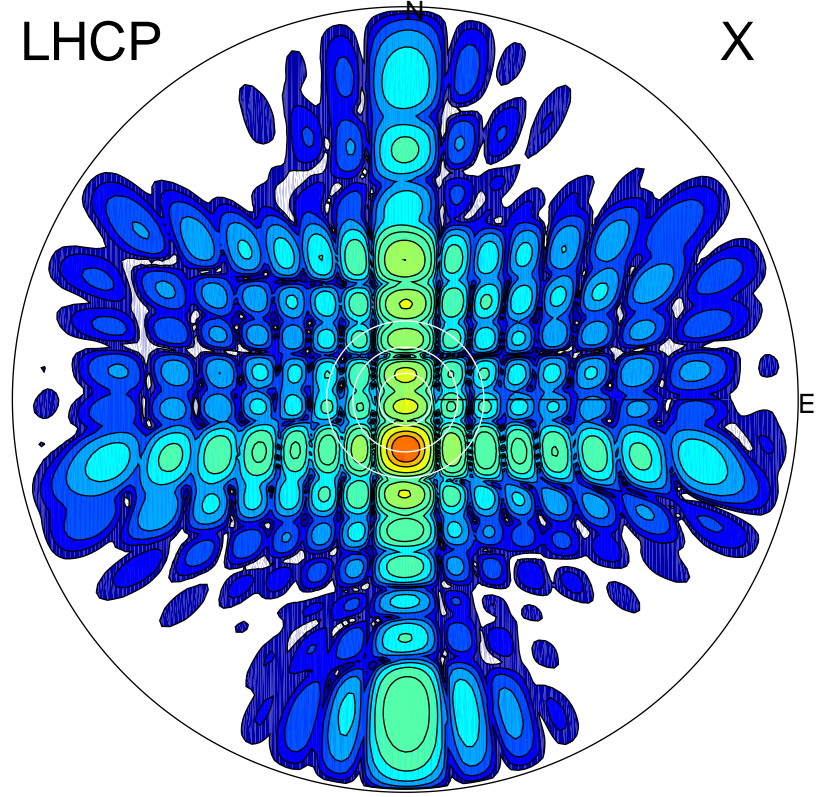


2016-03-04 15:06:00 A1 6.20000000 MHz 743.0 kW

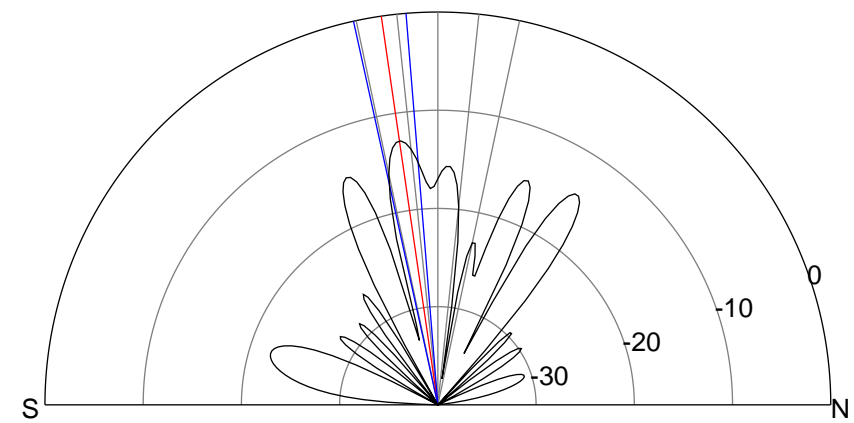
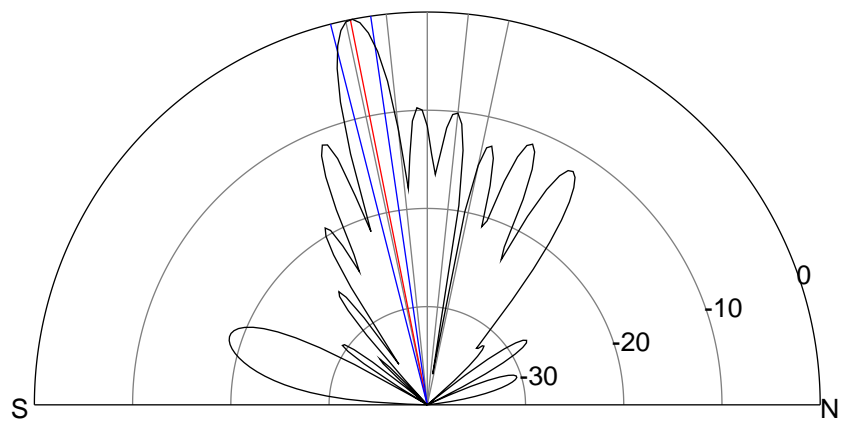
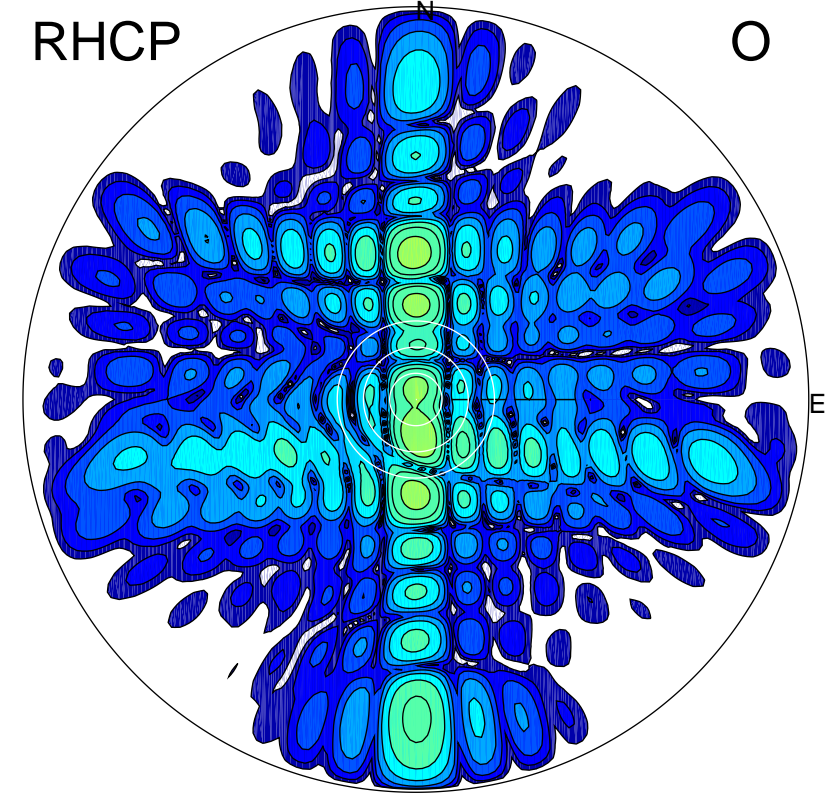
LHCP

X



RHCP

O



### ERP 423.2 MW

Peak gain 27.6 dBi at Az 179 Zen 11  
RHCP gain 13.3 dBi  
N-S peak 27.6 dBi at Zen -11.3  
N-S -3 dB beamwidth 6.0 deg.

### ERP 22.7 MW

Peak gain 14.9 dBi at Az 174 Zen 9  
LHCP gain 25.7 dBi  
N-S peak 14.7 dBi at Zen -8.3  
N-S -3 dB beamwidth 7.7 deg.