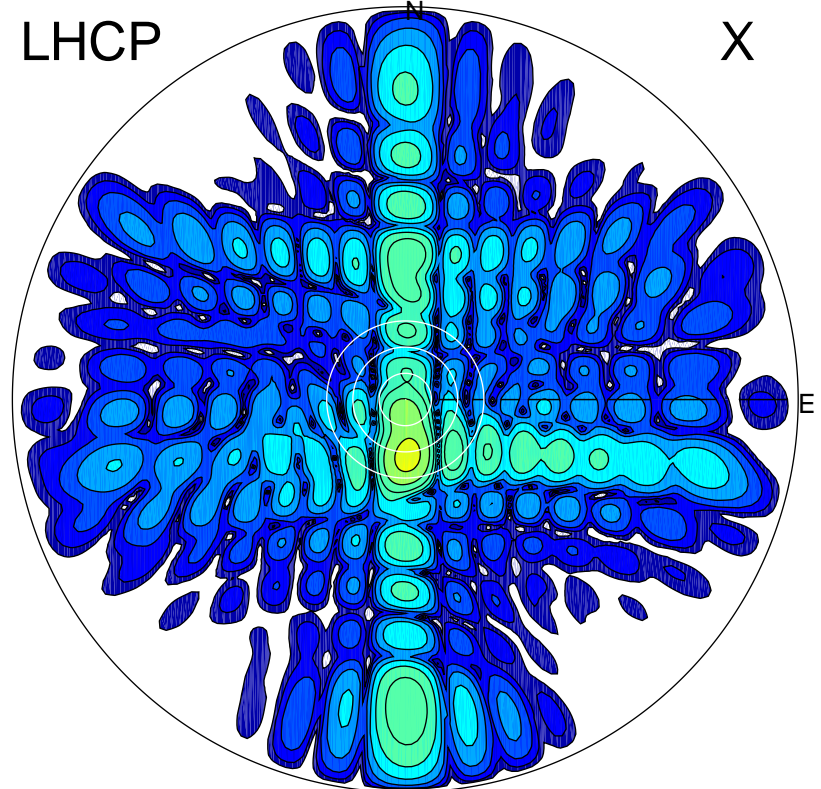


2016-03-04 15:02:02 A1 6.20000000 MHz 746.0 kW

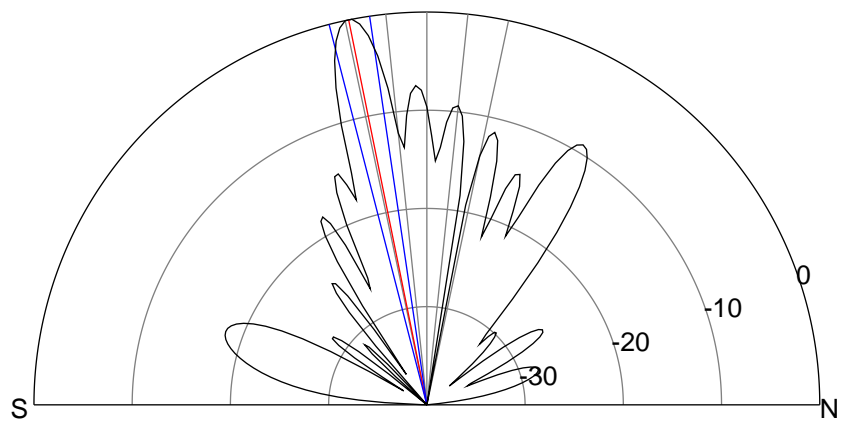
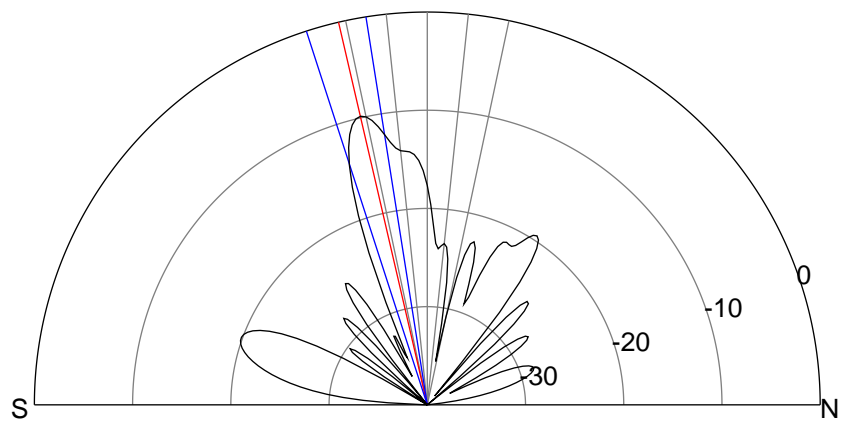
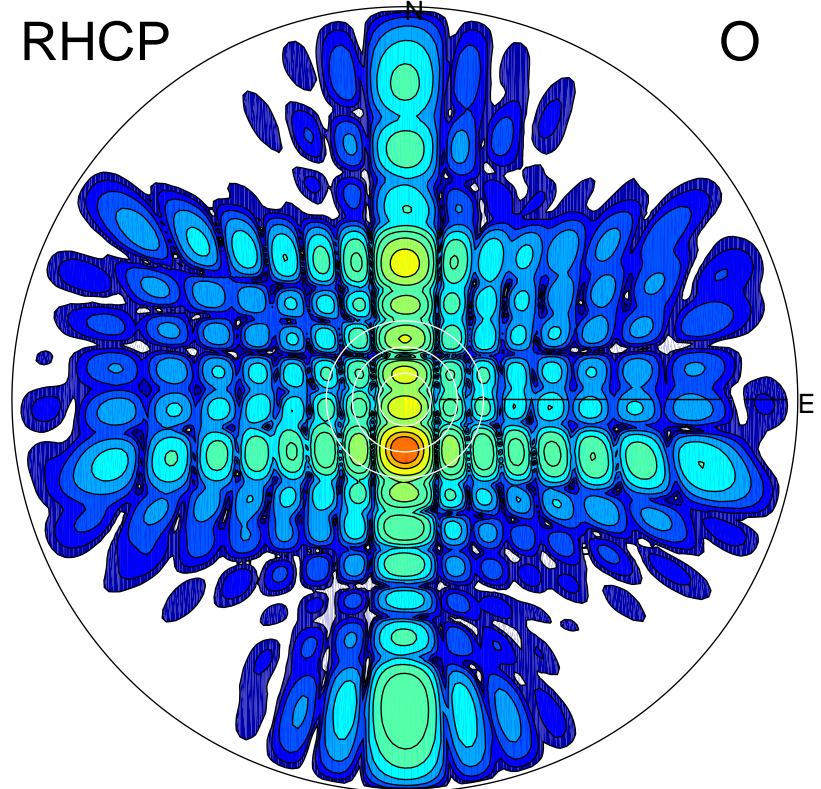
LHCP

X



RHCP

O



ERP 40.8 MW

Peak gain 17.4 dBi at Az 178 Zen 13
RHCP gain 26.5 dBi
N-S peak 17.3 dBi at Zen -13.1
N-S -3 dB beamwidth 8.9 deg.

ERP 385.6 MW

Peak gain 27.1 dBi at Az 180 Zen 11
LHCP gain 16.6 dBi
N-S peak 27.2 dBi at Zen -11.5
N-S -3 dB beamwidth 6.0 deg.